



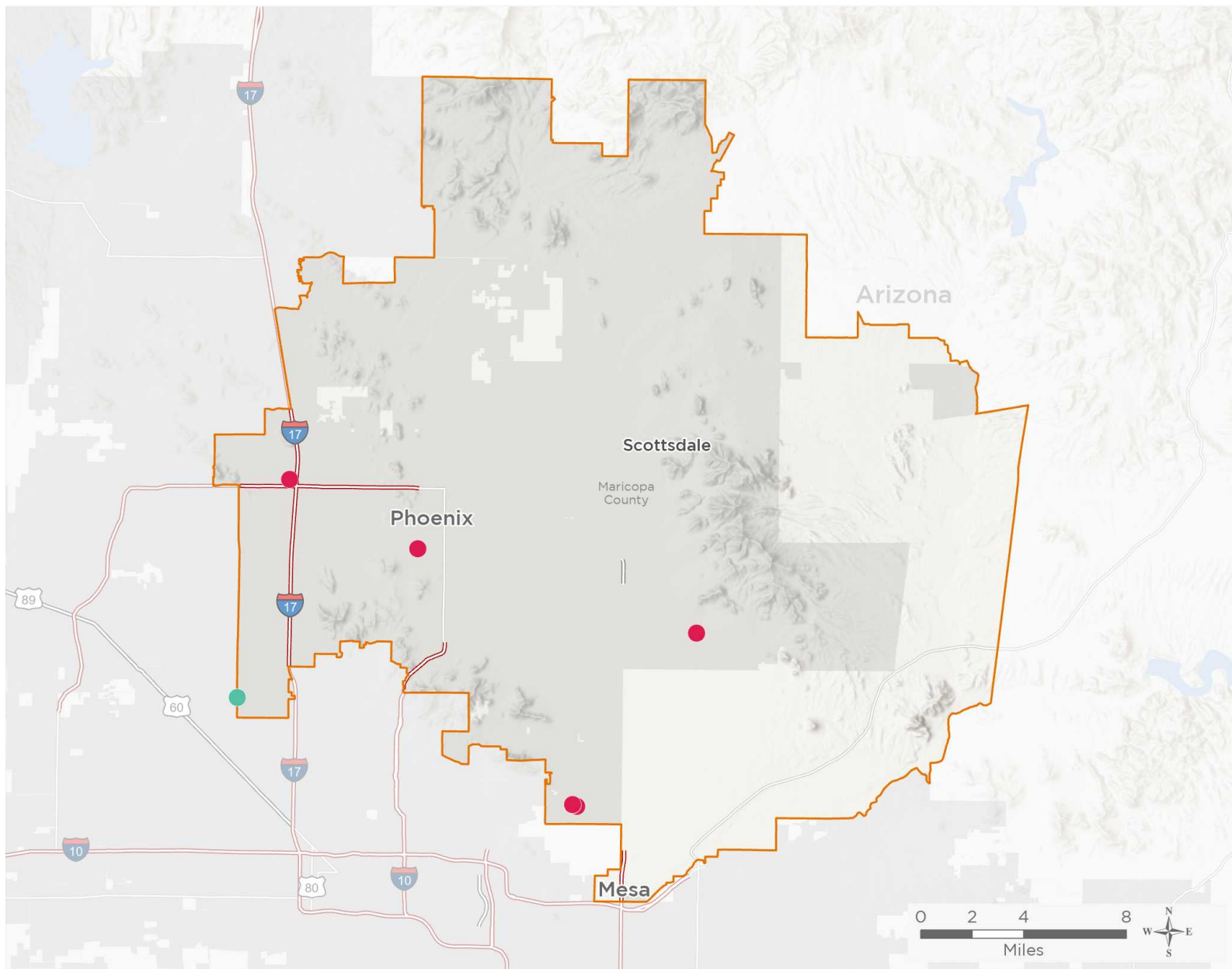
NATIONAL ASSOCIATION OF
Community Health Centers

Representative David Schweikert

117th United States Congress

Arizona's **6TH** Congressional District


The 2 federally-funded health center organizations with a presence in Arizona's 6th Congressional District leverage **\$8,844,160** in federal investments to serve **112,166** patients.





7

**NUMBER OF DELIVERY SITES IN
CONGRESSIONAL DISTRICT**

 Federally-funded site
(each color represents one organization)

 Major Highways
 Highways
 Major Roads

 117th Congressional
District Boundaries

 County Boundaries
 City or Town

Notes | Delivery sites represent locations of organizations funded by the federal Health Center Program. Some locations may overlap due to scale or may otherwise not be visible when mapped. Federal investments represent the total funding from the federal Health Center Program to grantees with a presence in the state in 2019.

Sources | Federally-Funded Delivery Site Locations: data.HRSA.gov, November 16, 2020.
Health Center Patients and Federal Funding | 2019 Uniform Data System, Bureau of Primary Health Care, HRSA.

© National Association of Community Health Centers, 2021. For more information, please contact federalaffairs@nachc.org.



NATIONAL ASSOCIATION OF
Community Health Centers

Representative David Schweikert

117th United States Congress

Arizona's **6TH** Congressional District

7

NUMBER OF DELIVERY SITES IN CONGRESSIONAL DISTRICT

(main organization in bold)

● **ADELANTE HEALTHCARE, INC.**

Adelante Healthcare West Phoenix - 7725 N 43rd Ave Ste 510 Phoenix, AZ 85051-5771

● **NEIGHBORHOOD OUTREACH ACCESS TO HEALTH**

Cholla Health Center - 11130 E Cholla St Bldg I Scottsdale, AZ 85259-3922

Heuser Family Medicine Center - 7301 E 2nd St Ste 210 Scottsdale, AZ 85251-5620

Heuser Pediatric Dental - 7301 E 2nd St Ste 300 Scottsdale, AZ 85251-5627

NOAH Mobile Clinic - 3634 N Drinkwater Blvd Scottsdale, AZ 85251-5622

Palomino Health Center - 16251 N Cave Creek Rd Phoenix, AZ 85032-2976

Venado Valley Health Center - 20440 N 27th Ave Phoenix, AZ 85027-3240