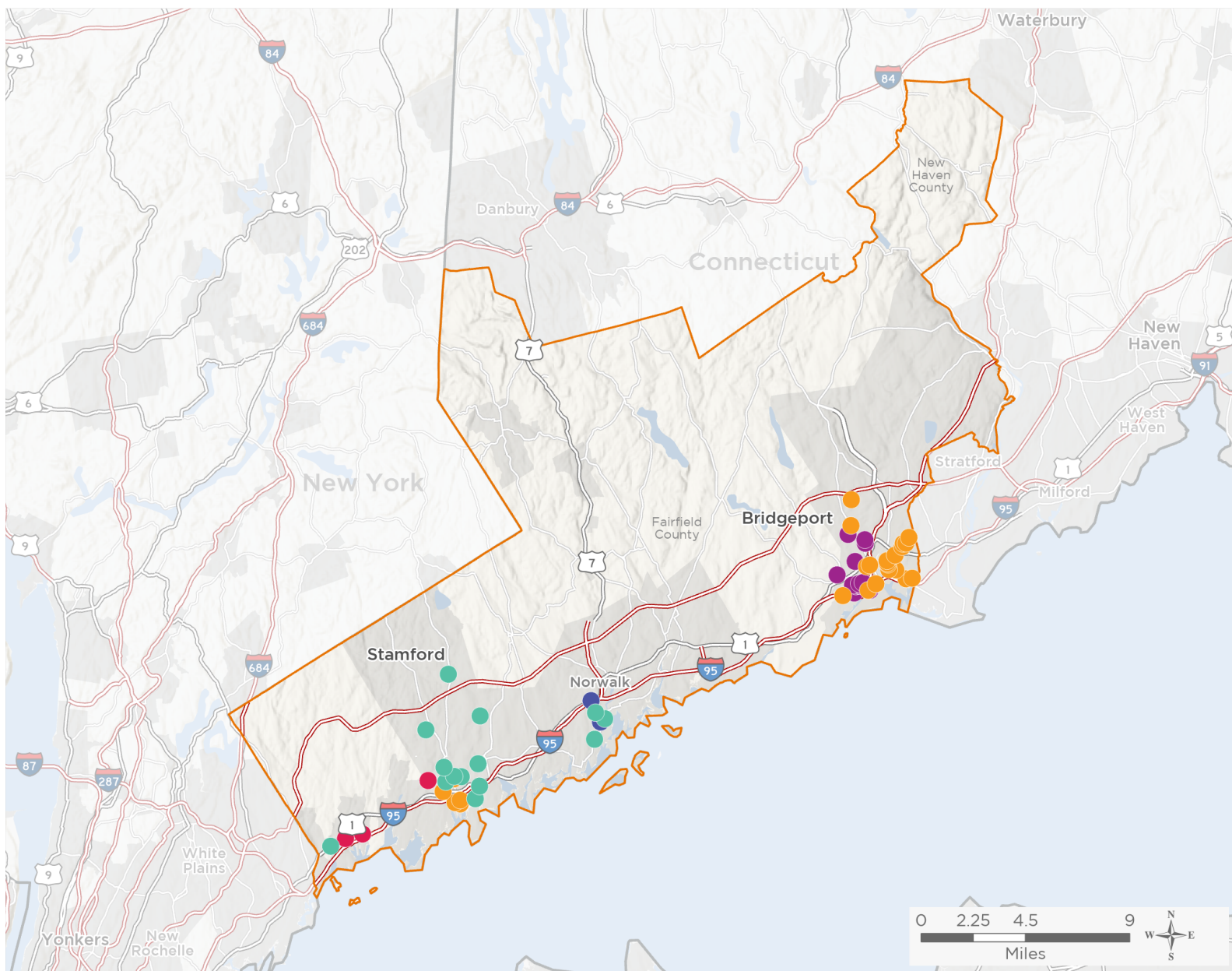




117th United States Congress








Connecticut's 4TH Congressional District

The 5 federally-funded health center organizations with a presence in Connecticut's 4th Congressional District leverage **\$21,810,542** in federal investments to serve **188,884** patients.



61

NUMBER OF DELIVERY SITES IN CONGRESSIONAL DISTRICT

-  **Federally-funded site**
(each color represents one organization)
 -  **Major Highways**
 -  **Highways**
 -  **Major Roads**
 -  **117th Congressional District Boundaries**
 -  **County Boundaries**
 -  **City or Town**

Notes | Delivery sites represent locations of organizations funded by the federal Health Center Program. Some locations may overlap due to scale or may otherwise not be visible when mapped. Federal investments represent the total funding from the federal Health Center Program to grantees with a presence in the state in 2019.

Sources | Federally-Funded Delivery Site Locations: data.HRSA.gov, November 16, 2020.
Health Center Patients and Federal Funding | 2019 Uniform Data System, Bureau of Primary Health Care, HRSA.



61

**NUMBER OF DELIVERY SITES IN
CONGRESSIONAL DISTRICT**

(main organization in bold)

● **COMMUNITY HEALTH CENTER, INCORPORATED**

Child Guidance Center of Southern Connecticut - 103 W Broad St Bldg 103 Stamford, CT 06902-3713
Child Guidance Center of Southern Connecticut - 401 Shippan Ave Stamford, CT 06902-6075
Child Guidance Center of Southern Connecticut - 81 Holly Hill Ln Fl 2 Greenwich, CT 06830-6071
Day Street Community Health Center - 49 Day St Norwalk, CT 06854-4901
Franklin Street Community Health Center - 141 Franklin St Stamford, CT 06901-1014
J.M. Wright Technical High School SBHC - 120 Bridge St Stamford, CT 06905-4401
Julia A. Stark Elementary School SBHC - 398 Glenbrook Rd Stamford, CT 06906-2122
Northeast Elementary School SBHC - 82 Scofieldtown Rd Stamford, CT 06903-4020
Norwalk Smiles At Ben Franklin - SBHC - 165 Flax Hill Rd Norwalk, CT 06854-2837
Norwalk Smiles At Nathaniel Ely Head Start - SBHC - 11 Ingalls Ave Norwalk, CT 06854-4605
Roxbury Elementary School SBHC - 751 W Hill Rd Stamford, CT 06902-1413
Springdale Elementary School SBHC - 1127 Hope St Stamford, CT 06907-1825
Stamford Academy SBHC - 229 North St Stamford, CT 06901-1112
Trailblazers Academy/Domus Charter Schools SBHC - 83 Lockwood Ave Stamford, CT 06902-4201

● **FAMILY CENTERS INC.**

Family Centers Health Care at 60 Palmers Hill - 60 Palmers Hill Rd Stamford, CT 06902-2113
Family Centers Health Care at Wilbur Peck Court - 111 Wilbur Peck Ct Greenwich, CT 06830-6323
FCHC at 20 Bridge Street - 20 Bridge St Greenwich, CT 06830-5238

● **NORWALK COMMUNITY HEALTH CENTER, INC.**

120 Connecticut Avenue, Norwalk, CT 06854 - 120 Connecticut Ave Norwalk, CT 06854-1525
Mobile Van #1 - 120 Connecticut Ave Norwalk, CT 06854-1525
Norwalk Community Health Center @ Smilow Life Center - 55 Chestnut St Norwalk, CT 06854-3622

● **OPTIMUS HEALTH CARE, INC.**

Barnum/Waltersville Elementary School - SBHC - 495 Waterview Ave Bridgeport, CT 06608-2554
Bullard-Havens Technical High School - SBHC - 500 Palisade Ave Bridgeport, CT 06610-3458
Columbus Elementary School - SBHC - 275 George St Bridgeport, CT 06604-3320
Fairchild Wheeler Interdistrict Magnet Campus - SBHC - 840 Old Town Rd Bridgeport, CT 06606-1448
Housatonic Community College Health Center - 900 Lafayette Blvd Bridgeport, CT 06604-4704
Jettie S. Tisdale Elementary School - SBHC - 250 Hollister Ave Bridgeport, CT 06607-1924
JFK Elementary School - SBHC - 700 Palisade Ave Bridgeport, CT 06610-3457
Luis Munoz Marin Elementary School - SBHC - 479 Helen St Bridgeport, CT 06608-1321
OPTIMUS at Hall Neighborhood House - 52 George E Pipkins Way # 39S Bridgeport, CT 06608-2425
OPTIMUS at Inspirica - 8 Woodland Pl Stamford, CT 06902-6939
OPTIMUS at Kinsella - 1862 Commerce Dr Bridgeport, CT 06605-2230
OPTIMUS Fairgate - 9 Fairgate Dr Stamford, CT 06902-4927
OPTIMUS Harbor Point - 805 Atlantic St Stamford, CT 06902-6805
OPTIMUS Hollow Community Health Center - 82 George St Bridgeport, CT 06604-3315



61

**NUMBER OF DELIVERY SITES IN
CONGRESSIONAL DISTRICT**

(main organization in bold)

● **OPTIMUS HEALTH CARE, INC., cont.**

OPTIMUS JP Morgan Chase Wellness Center - 1071 E Main St Bridgeport, CT 06608-1618
OPTIMUS Main Street Pediatrics - 3715 Main St Bridgeport, CT 06606-3618
OPTIMUS on Barnum Avenue - 471 Barnum Ave Bridgeport, CT 06608-2409
OPTIMUS on the Boulevard - 1351 Washington Blvd Stamford, CT 06902-2419
OPTIMUS Pacific House Shelter - 597 Pacific St Stamford, CT 06902-5814
OPTIMUS Park City Primary Care - 64 Black Rock Ave Bridgeport, CT 06605-1200
OPTIMUS Ralphola Taylor Community Health Center - 790 Central Ave Bridgeport, CT 06607-1705
OPTIMUS Smiles for Miles Mobile Dental Center - 975 E Main St Bridgeport, CT 06608-1914
OPTIMUS Transitional Clinic - 480 Bond St Bridgeport, CT 06610-2205
Warren Harding High School - SBHC - 379 Bond St Bridgeport, CT 06610-2201

● **SOUTHWEST COMMUNITY HEALTH CENTER, INC.**

Bassick High School, School Based Health Clinic - 1181 Fairfield Ave Bridgeport, CT 06605-1183
Casa - 690 Arctic St Bridgeport, CT 06608-2008
Casa Recovery - 1124 Iranistan Ave Bridgeport, CT 06605-1121
Central High School, School Based Health Center - 1 Lincoln Blvd Bridgeport, CT 06606-5502
Cesar Batalla, School Based Health Center - 606 Howard Ave Bridgeport, CT 06605-2016
Family Health Center - 762 Lindley St Bridgeport, CT 06606-5046
Florance Blackham School, School Based Health Centr - 425 Thorne St Bridgeport, CT 06606-3418
Harrison Apartments - 651 State St Bridgeport, CT 06604-4507
James J. Curiale School - 300 Laurel Ave Bridgeport, CT 06605-1103
Operation Hope - 50 Nichols Ave Fairfield, CT 06825-1928
Pivot Ministries - 495 Jane St Bridgeport, CT 06608-1707
Prospect House - 392 Prospect St Bridgeport, CT 06604-4625
Read School, School Based Health Center - 130 Ezra St Bridgeport, CT 06606-5061
Roosevelt School School Based Health Center - 680 Park Ave Bridgeport, CT 06604-4610
Southwest Community Hlth Ctr, Inc - 968 Fairfield Ave Bridgeport, CT 06605-1116
Southwest Community Hlth Ctr, Inc - 1046 Fairfield Ave Bridgeport, CT 06605-1116
Southwest Community Hlth Ctr, Inc - 510 Clinton Ave Bridgeport, CT 06605-1701