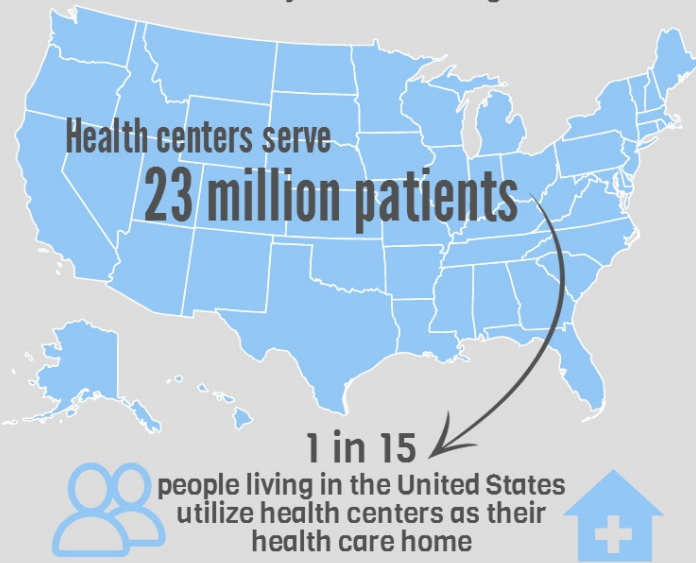


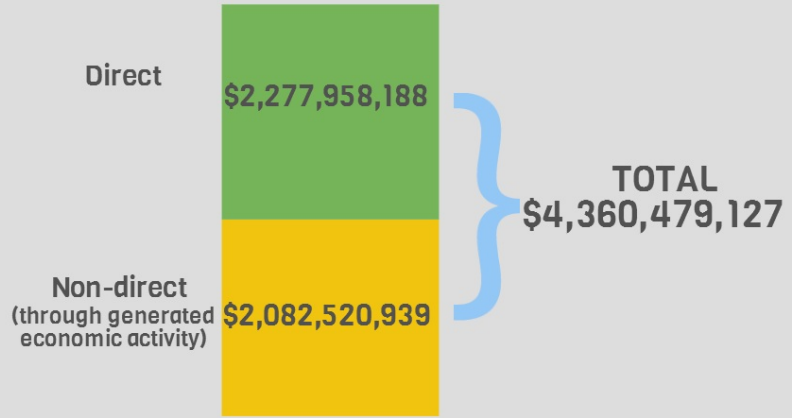
Economic and Community Impact of Federal Health Center Funding ~ Nebraska ~

National Impact

For 50 years, America's Health Centers have provided high-quality primary care in more than 9,000 underserved communities across the U.S. Federal funding is only one portion of health centers' overall revenues, but it produces an economic "ripple effect," creating jobs and fueling additional economic activity through purchases of goods and services.



National Economic Impact



State Impact

In the state of Nebraska alone, federal health center funding generates:



Impact of the Primary Care Funding Cliff

Without action by Congress, the Health Center Fund is set to expire after FY2015, leaving health centers across the nation to face up to a 70% cut to their operational grants, which could lead to staff layoffs, site closures, and loss of access to care.

