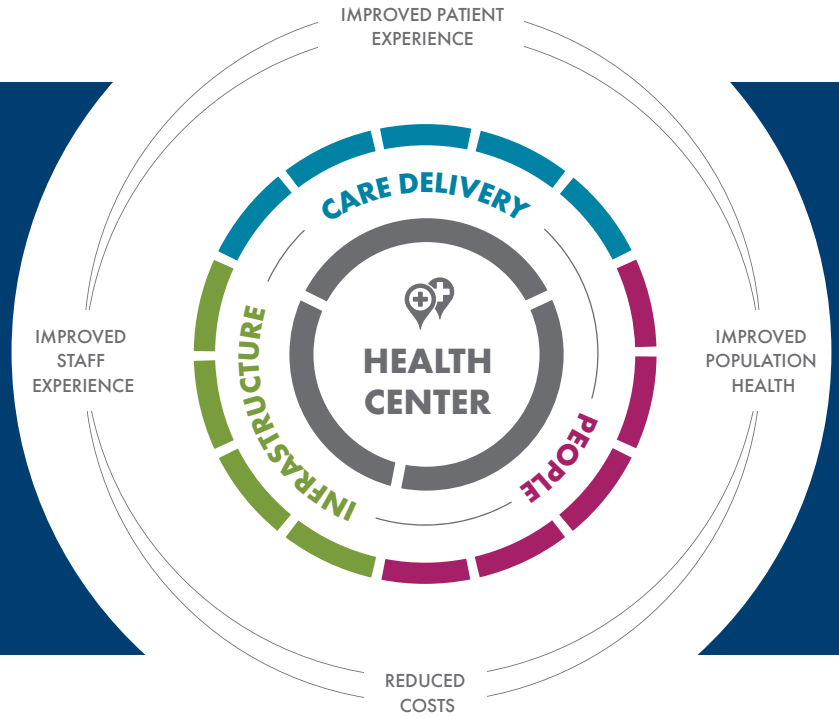




# VALUE TRANSFORMATION FRAMEWORK



## HEALTH CENTER



### CARE DELIVERY



POPULATION HEALTH  
MANAGEMENT



PATIENT-CENTERED  
MEDICAL HOME



EVIDENCE-BASED CARE



CARE MANAGEMENT



SOCIAL DETERMINANTS  
OF HEALTH



### INFRASTRUCTURE



IMPROVEMENT STRATEGY



HEALTH INFORMATION  
TECHNOLOGY



POLICY



PAYMENT



### PEOPLE



PATIENTS



CARE TEAMS



LEADERSHIP



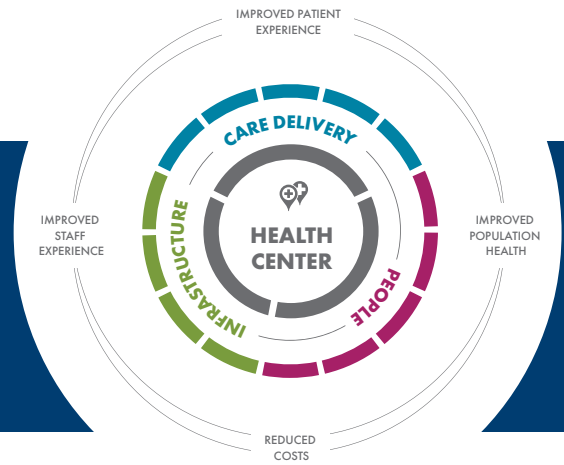
WORKFORCE



PARTNERSHIPS



# VALUE TRANSFORMATION FRAMEWORK



## HEALTH CENTER



### CARE DELIVERY



#### POPULATION HEALTH MANAGEMENT

Action Guides

- Risk Stratification
- Models of Care



#### PATIENT-CENTERED MEDICAL HOME

Action Guides

- In Development



#### EVIDENCE-BASED CARE

Action Guides

- In Development



#### CARE MANAGEMENT

Action Guides

- Care Management



#### SOCIAL DETERMINANTS OF HEALTH

Action Guides

- In Development



### INFRASTRUCTURE



#### IMPROVEMENT STRATEGY

Action Guides

- In Development



#### HEALTH INFORMATION TECHNOLOGY

Action Guides

- In Development



#### POLICY

Action Guides

- In Development



#### PAYMENT

Action Guides

- In Development



### PEOPLE



#### PATIENTS

Action Guides

- Patient Engagement



#### CARE TEAMS

Action Guides

- Care Teams



#### LEADERSHIP

Action Guides

- Leadership



#### WORKFORCE

Action Guides

- In Development



#### PARTNERSHIPS

Action Guides

- In Development