



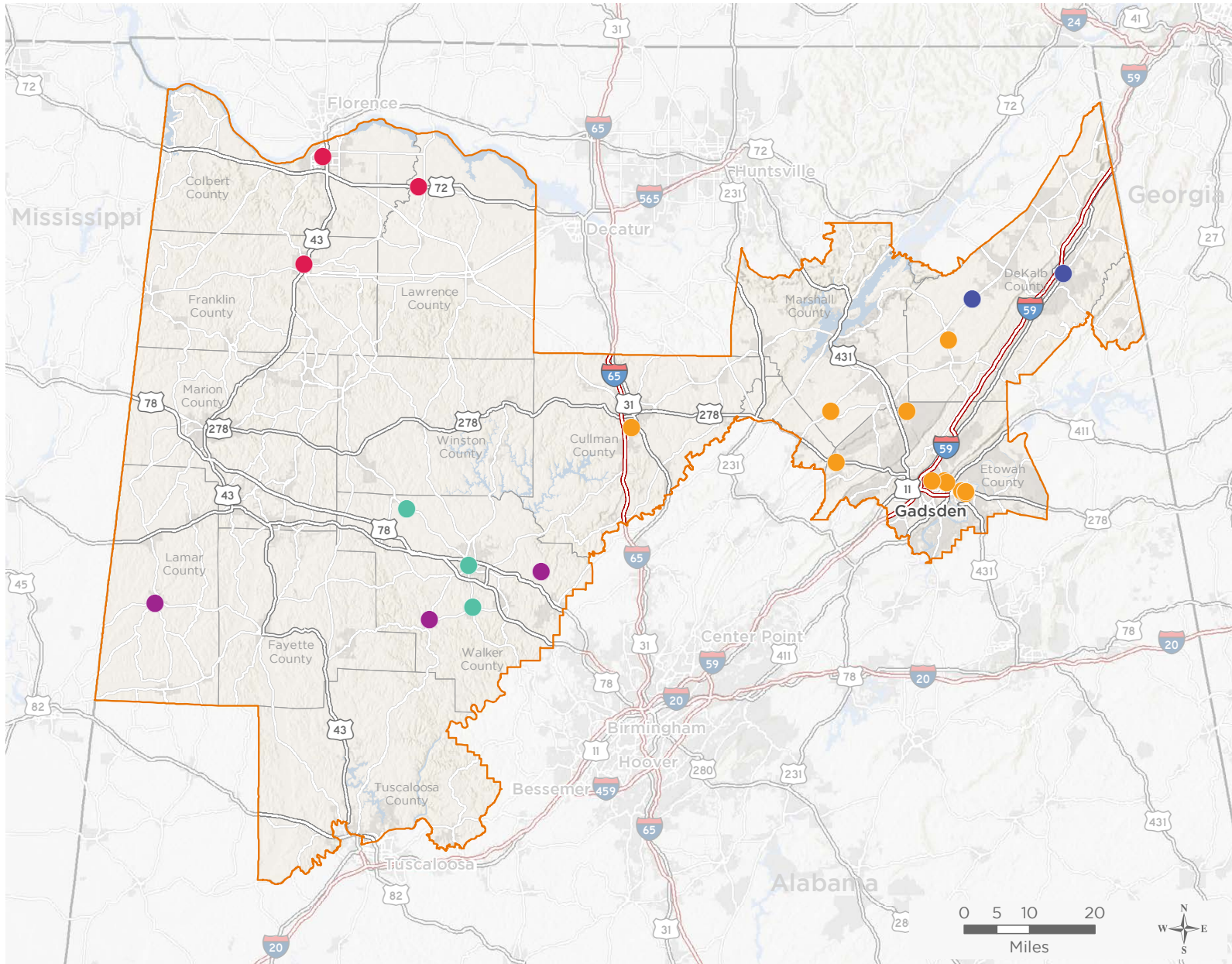
NATIONAL ASSOCIATION OF
Community Health Centers

Representative Robert Aderholt

116th United States Congress

Alabama's 4TH Congressional District

The 5 federally-funded health center organizations with a presence in Alabama's 4th Congressional District leverage \$37,378,146 in federal investments to serve 148,785 patients.



24

NUMBER OF DELIVERY SITES IN CONGRESSIONAL DISTRICT

- Federally-funded site (each color represents one organization)
- 116th Congressional District Boundaries
- Major Highways
- Highways
- Major Roads
- County Boundaries
- City or Town

Notes | Delivery sites represent locations of organizations funded by the federal Health Center Program. Some locations may overlap due to scale or may otherwise not be visible when mapped. Federal investments represent the total funding from the federal Health Center Program to grantees with a presence in the state in 2017.

Sources | Federally-Funded Delivery Site Locations: data.HRSA.gov, December 3, 2018. Health Center Patients and Federal Funding | 2017 Uniform Data System, Bureau of Primary Health Care, HRSA.

© National Association of Community Health Centers, 2019. For more information, please contact federalaffairs@nachc.org.



24

NUMBER OF DELIVERY SITES IN CONGRESSIONAL DISTRICT

(main organization in bold)

CAPSTONE RURAL HEALTH CENTER

Capstone Rural Health Center - 5947 Highway 269 Parrish, AL 35580-3847

Capstone Rural Health Center- Jasper Cottage - 714 12th St W Jasper, AL 35501-4519

Capstone Rural Health Center-Nauvoo - PO BOX 365 Nauvoo, AL 35578-0365

FAMILY HEALTH CARE CLINIC, INC.

Family Health Care Clinic, Inc.--Muscle Shoals - 102 Physicians Dr Ste B Muscle Shoals, AL 35661-2100

Family Health Care Clinic, Inc. --Russellville - 318 Coffee Ave NE Russellville, AL 35653-2331

Family Health Care Clinic, Inc. --Town Creek - 1841 Al-20 Town Creek, AL 35672

NORTHEAST ALABAMA HEALTH SERVICES, INC.

Northeast Alabama Health Services, Inc. - Fort Payne - 3840 Gault Ave N Fort Payne, AL 35967-5211

Northeast Alabama Health Services, Inc. - Fyffe - 34617 Al Highway 75 Fyffe, AL 35971-3488

QUALITY OF LIFE HEALTH SERVICES, INC.

Canterberry Family Practice - 502 N 27th St Gadsden, AL 35904-1580

Cullman Quality Health Care - 2016 Main Ave SW Cullman, AL 35055-5239

Dekalb Quality Health Care - 12062 AL-227 Geraldine, AL 35974

Douglas Medical Center - 8225 AL-75 Horton, AL 35980

Gadsden Family and Student Health Solutions - 1216 Wilbanks Ave Gadsden, AL 35903-2024

J.W. Stewart Neighborhood Health Center - 1409 Springfield Ave Gadsden, AL 35903-2819

Procure - Colley Homes - 420 N 6th St Gadsden, AL 35901-3244

Quality Health Express - 1411 Piedmont Cutoff Gadsden, AL 35903-2708

Quality Health Express II - 1411 Piedmont Cutoff Gadsden, AL 35903-2708

Quality of Life Health Complex - 1411 Piedmont Cutoff Gadsden, AL 35903-2708

Roberta O. Watts Medical Center - 1020 Tuscaloosa Ave Gadsden, AL 35901-3005

Sardis City Medical Center - 1989 Sardis Dr Boaz, AL 35956-2344

W. T. Scruggs Medical Center - 4350 Cleveland Ave Altoona, AL 35952

WHATLEY HEALTH SERVICES, INC

Oakman Student Health and Wellness Center - 142 School St Oakman, AL 35579

Vernon Health Center - 230 Hospital Dr Vernon, AL 35592-5251

Whatley Health Svs @ Sipsey - 3805 Sipsey Rd Sipsey, AL 35584