



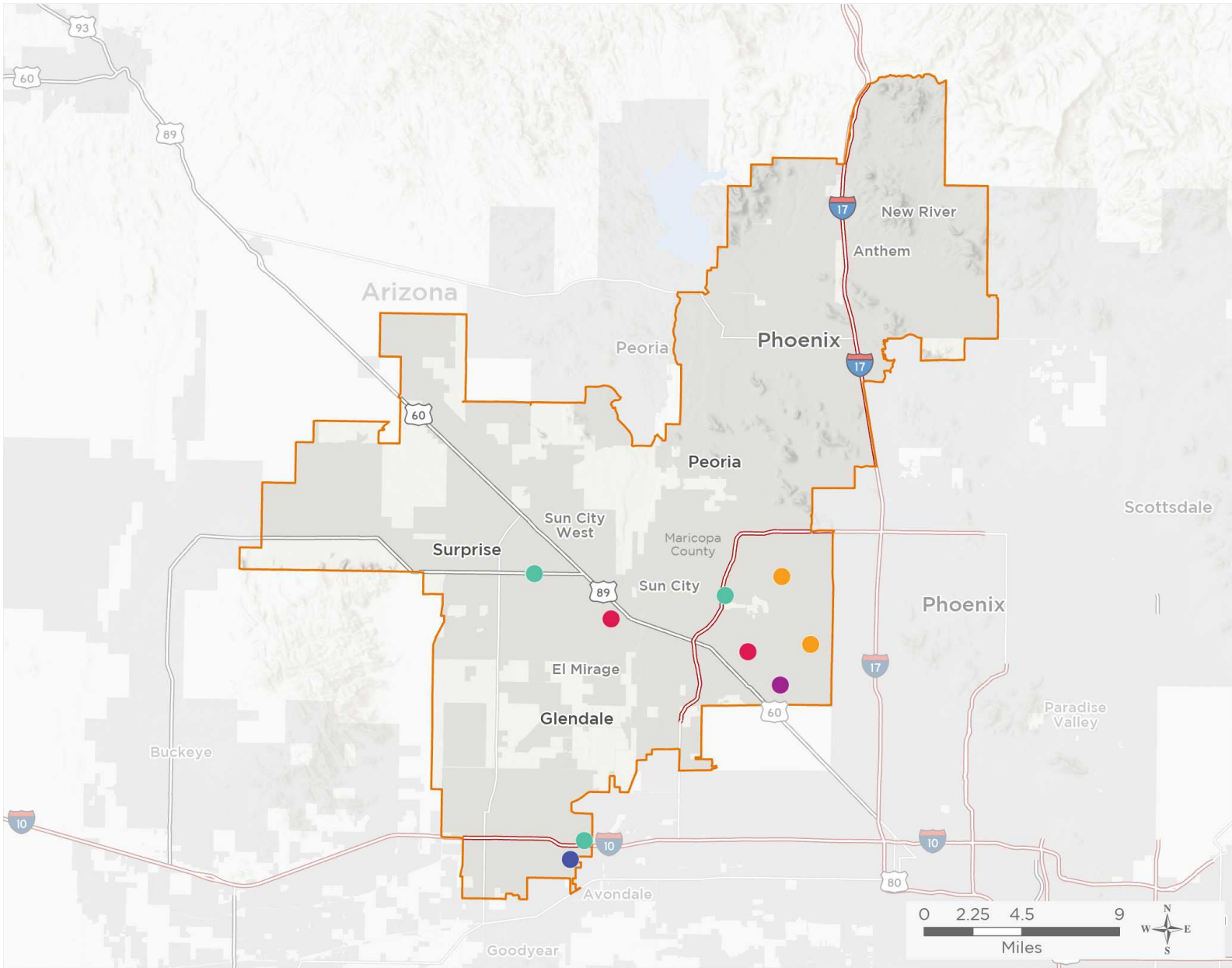
NATIONAL ASSOCIATION OF
Community Health Centers

Representative Debbie Lesko

117th United States Congress

Arizona's **8TH** Congressional District

The 5 federally-funded health center organizations with a presence in Arizona's 8th Congressional District leverage **\$18,361,161** in federal investments to serve **290,683** patients.



13

NUMBER OF DELIVERY SITES IN CONGRESSIONAL DISTRICT

- Federally-funded site (each color represents one organization)
- 117th Congressional District Boundaries
- Major Highways
- Highways
- Major Roads
- County Boundaries
- City or Town

Notes | Delivery sites represent locations of organizations funded by the federal Health Center Program. Some locations may overlap due to scale or may otherwise not be visible when mapped. Federal investments represent the total funding from the federal Health Center Program to grantees with a presence in the state in 2019.

Sources | Federally-Funded Delivery Site Locations: data.HRSA.gov, November 16, 2020.
Health Center Patients and Federal Funding | 2019 Uniform Data System, Bureau of Primary Health Care, HRSA.

© National Association of Community Health Centers, 2021. For more information, please contact federalaffairs@nachc.org.



13

NUMBER OF DELIVERY SITES IN CONGRESSIONAL DISTRICT

(main organization in bold)

● **ADELANTE HEALTHCARE, INC.**

Adelante Healthcare Goodyear - 13471 W Cornerstone Blvd Goodyear, AZ 85395-2713

Adelante Healthcare Peoria - 15525 N 83rd Ave Ste 104 Peoria, AZ 85382-5820

Adelante Healthcare Surprise - 15351 W Bell Rd Surprise, AZ 85374-4580

Adelante Healthcare Surprise Dental Office - 15317 W Bell Rd Ste 108 Surprise, AZ 85374-3901

Adelante Healthcare Surprise Same Day Clinic - 15317 W Bell Rd Ste 100 Surprise, AZ 85374-3900

● **MARICOPA COUNTY SPECIAL HEALTH CARE DISTRICT**

Valleywise Community Health Center - El Mirage - 12428 W Thunderbird Rd El Mirage, AZ 85335-3113

Valleywise Comprehensive Health Center-Peoria - 8088 W Whitney Dr Bldg Peoria, AZ 85345-6564

● **MOUNTAIN PARK HEALTH CENTER**

Mountain Park Health Center - Goodyear - 140 N Litchfield Rd Ste 200 Goodyear, AZ 85338-1226

Mountain Park Health Center - Goodyear Suite 102 - 140 N Litchfield Rd Ste 102 Goodyear, AZ 85338-1269

Mountain Park Health Center - Goodyear Suite 106 - 140 N Litchfield Rd Ste 106 Goodyear, AZ 85338-1226

● **NEIGHBORHOOD OUTREACH ACCESS TO HEALTH**

Copperwood Health Center - 11851 N 51st Ave Ste B110 Glendale, AZ 85304-2823

Sierra Health Center - 6206 W Bell Rd Ste 1 Glendale, AZ 85308-3750

● **TERROS INC**

TERROS Glendale Care Clinic - 6153 W Olive Ave Glendale, AZ 85302-4564