



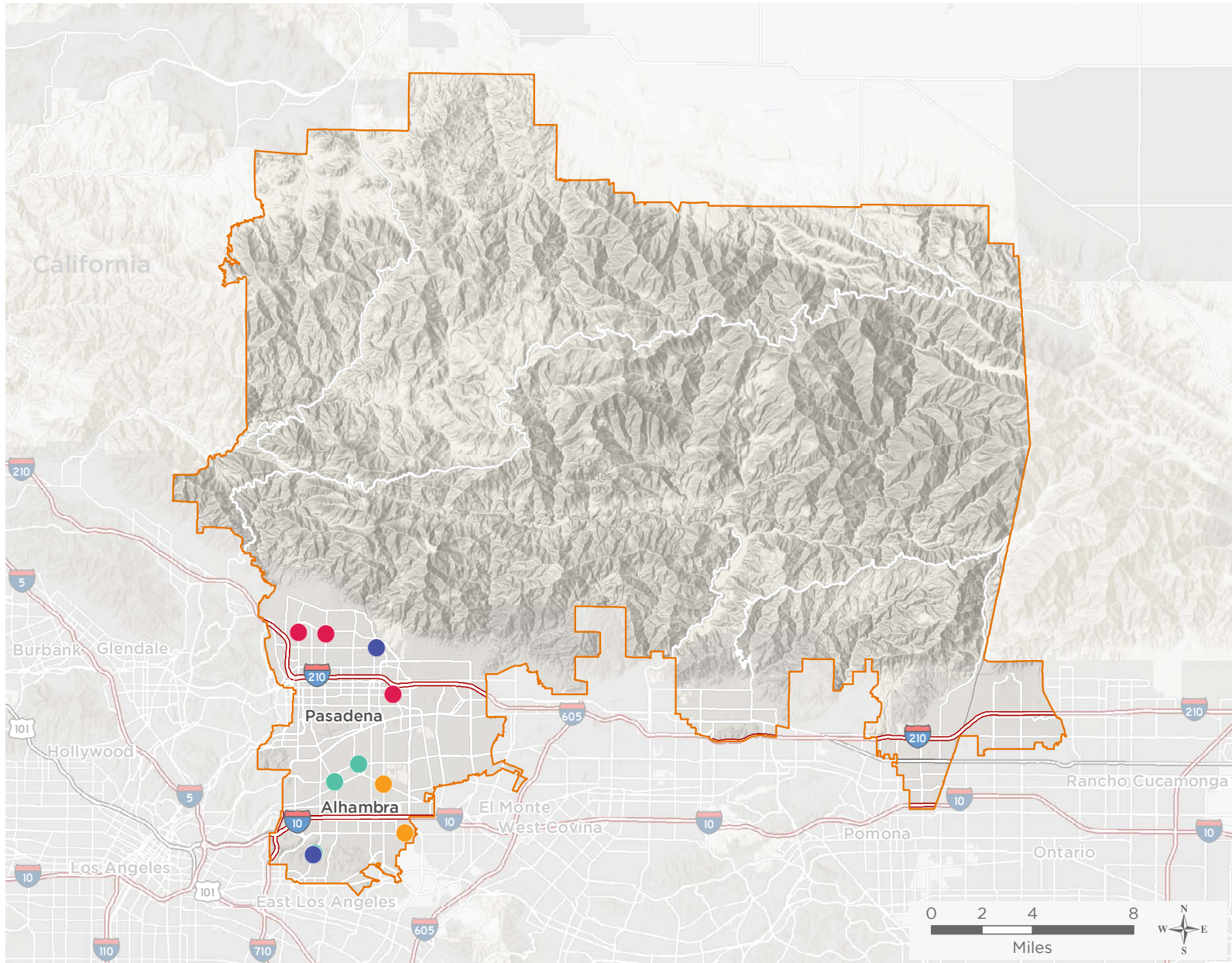
NATIONAL ASSOCIATION OF  
Community Health Centers

**Representative Judy Chu**

116th United States Congress

California's **27<sup>TH</sup>** Congressional District

The 6 federally-funded health center organizations with a presence in California's 27th Congressional District leverage **\$31,186,408** in federal investments to serve **168,581** patients.



 Federally-funded site  
(each color represents one organization)

 116th Congressional District Boundaries

 Major Highways

 County Boundaries

 Highways

 City or Town

 Major Roads

**18**

**NUMBER OF DELIVERY SITES IN CONGRESSIONAL DISTRICT**

Notes | Delivery sites represent locations of organizations funded by the federal Health Center Program. Some locations may overlap due to scale or may otherwise not be visible when mapped. Federal investments represent the total funding from the federal Health Center Program to grantees with a presence in the state in 2017.

Sources | Federally-Funded Delivery Site Locations: data.HRSA.gov, December 3, 2018.  
Health Center Patients and Federal Funding | 2017 Uniform Data System, Bureau of Primary Health Care, HRSA.

© National Association of Community Health Centers, 2019. For more information, please contact [federalaffairs@nachc.org](mailto:federalaffairs@nachc.org).



18

**NUMBER OF DELIVERY SITES IN  
CONGRESSIONAL DISTRICT**

(main organization in bold)

**CHINATOWN SERVICE CENTER**

- CSC Community Health Center - San Gabriel - 555 W Las Tunas Dr San Gabriel, CA 91776-1134
- CSC Community Health Center - San Gabriel - 559 W Las Tunas Dr San Gabriel, CA 91776-1134
- CSC Community Health Center - San Gabriel Valley - 320 S Garfield Ave Ste 118 Alhambra, CA 91801-3887
- CSC Community Health Center - San Gabriel Valley - STE 126 - 320 S Garfield Ave Ste 126 Alhambra, CA 91801-3887
- CSC Community Health Center - San Gabriel Valley - STE 202 - 320 S Garfield Ave Ste 202 Alhambra, CA 91801-3887
- CSC Dental Services - Monterey Park - 850 S Atlantic Blvd Ste 303 Monterey Park, CA 91754-6712

**COMMUNITY HEALTH ALLIANCE OF PASADENA**

- ChapCare Del Mar - 3160 E Del Mar Blvd Pasadena, CA 91107-4649
- ChapCare Dental - 1855 N Fair Oaks Ave Ste G-100 Pasadena, CA 91103-1620
- ChapCare Fair Oaks - 1855 N Fair Oaks Ave Pasadena, CA 91103-1620
- ChapCare Lake - 1800 N Lake Ave Pasadena, CA 91104-1228

**COMPLETE CARE COMMUNITY HEALTH CENTER, INC.**

- Complete Care Community Health Center- Altadena - 2595 E Washington Blvd Ste 106 Pasadena, CA 91107
- Complete Care Community Health Center- Monterey Park suite 101 - 941 S Atlantic Blvd Ste 101 Monterey Park, CA 91754
- Complete Care Community Health Center- Monterey Park Suite 218 - 941 S Atlantic Blvd Ste 218 Monterey Park, CA 91754

**HERALD CHRISTIAN HEALTH CENTER**

- HCHC - Rosemead - 8841 Garvey Ave Rosemead, CA 91770-3358
- HCHC - San Gabriel - 923 S San Gabriel Blvd San Gabriel, CA 91776-2743

**JWCH INSTITUTE, INC.**

- Wesley Health Centers -- Andrew Escajeda Clinic - 1845 N Fair Oaks Ave Ste G151 Pasadena, CA 91103-1620
- Wesley Health Centers -- Michael Antonovich Dental Clinic - 1845 N Fair Oaks Ave Ste 1101 Pasadena, CA 91103-1620

**NORTHEAST VALLEY HEALTH CORPORATION**

- Comm Hlth Alliance Of Pasadena - 1855 N Fair Oaks Ave Ste 200 Pasadena, CA 91103-1620