



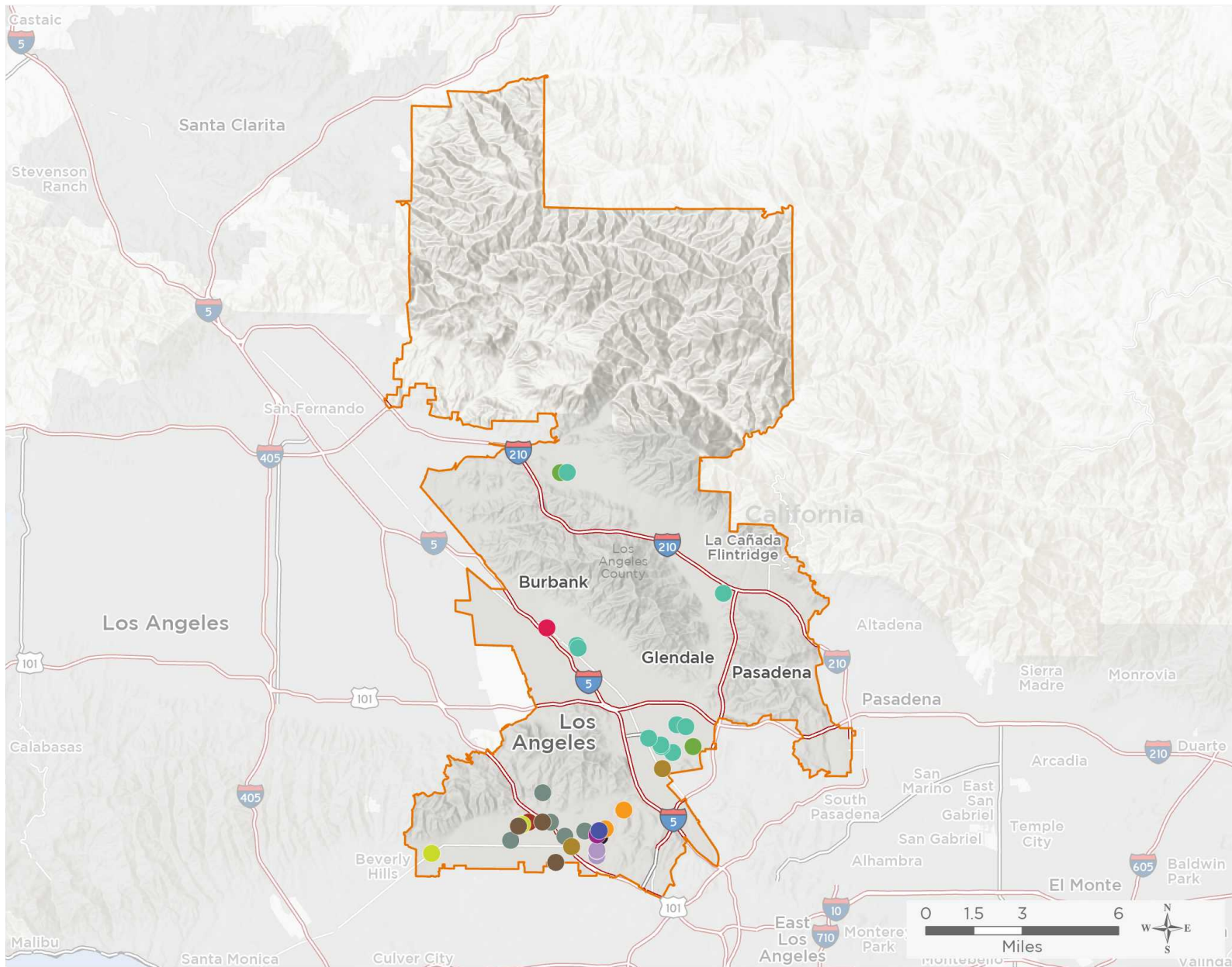
NATIONAL ASSOCIATION OF
Community Health Centers

Representative Adam Schiff

117th United States Congress

California's **28TH** Congressional District

The 13 federally-funded health center organizations with a presence in California's 28th Congressional District leverage **\$63,959,679** in federal investments to serve **585,019** patients.



37

NUMBER OF DELIVERY SITES IN CONGRESSIONAL DISTRICT

- Federally-funded site (each color represents one organization)
- 117th Congressional District Boundaries
- Major Highways
- Highways
- Major Roads
- County Boundaries
- City or Town

Notes | Delivery sites represent locations of organizations funded by the federal Health Center Program. Some locations may overlap due to scale or may otherwise not be visible when mapped. Federal investments represent the total funding from the federal Health Center Program to grantees with a presence in the state in 2019.

Sources | Federally-Funded Delivery Site Locations: data.HRSA.gov, November 16, 2020.
Health Center Patients and Federal Funding | 2019 Uniform Data System, Bureau of Primary Health Care, HRSA.

© National Association of Community Health Centers, 2021. For more information, please contact federalaffairs@nachc.org.



37

NUMBER OF DELIVERY SITES IN CONGRESSIONAL DISTRICT

(main organization in bold)

- ALL FOR HEALTH HEALTH FOR ALL**

AFH-Burbank-2 - 303 S Glenoaks Blvd Ste 9 Burbank, CA 91502-1190
 All for Health, Health for All - 519 E Broadway Glendale, CA 91205-1110
 All For Health, Health For All - Pediatrics - 1030 S Glendale Ave Ste 307 Glendale, CA 91205-2866
 All For Health, Health For All - South Central Avenue - 800 S Central Ave Ste 308 Glendale, CA 91204-4644
 All for Health, Health for All--Burbank - 401 S Glenoaks Blvd Ste 101 Burbank, CA 91502-2707
 All For Health, Health For All-Sunland - 8134 Foothill Blvd Sunland, CA 91040-2941
 All For Health, South Central II - 710 S Central Ave Ste 350 Glendale, CA 91204-4647
 All For Health-Montrose - 2048 Montrose Ave Montrose, CA 91020-1605
 Cedar House - 141 S Cedar St Glendale, CA 91205-1207
 Edison Pacific Health Center - 437 S Pacific Ave Glendale, CA 91204-1441
- ALL-INCLUSIVE COMMUNITY HEALTH CENTER**

All-Inclusive Community Health Center - 1311 N San Fernando Blvd Burbank, CA 91504-4236
- ALTAMED HEALTH SERVICES CORPORATION**

AltaMed General Pediatrics @ Children's Hospital - 4650 W Sunset Blvd Los Angeles, CA 90027-6062
- ASIAN PACIFIC HEALTH CARE VENTURE, INC.**

APHCV - John Marshall High School Health Center - 3939 Tracy St Los Angeles, CA 90027-3207
 APHCV-Los Feliz Health Center - 1530 Hillhurst Ave Los Angeles, CA 90027-5516
- COMPLETE CARE COMMUNITY HEALTH CENTER, INC.**

Complete Care Community Health Center - N. Vermont Avenue - 1300 N Vermont Ave Ste 606 Los Angeles, CA 90027-6088
- COMPREHENSIVE COMMUNITY HEALTH CENTERS, INC.**

Comprehensive Community Health Centers, Inc-Glendale - 801 S Chevy Chase Dr Ste 250 Glendale, CA 91205-4433
 Comprehensive Community Health Centers, Inc-Sunland - 8316 Foothill Blvd Sunland, CA 91040-2850
- JWCH INSTITUTE, INC.**

Student Health & Wellness Center - 855 N Vermont Ave Los Angeles, CA 90029-3516
 Wesley Health Centers (Vermont) - 954 N Vermont Ave Los Angeles, CA 90029-3529
 Wesley Health Centers-- Vermont Annex - 964 N Vermont Ave Los Angeles, CA 90029-3529
- LOS ANGELES FREE CLINIC., THE**

Hollywood Wilshire Health Center and Wallis Annenberg Children & Family Health Center - 5205 Melrose Ave
 Los Angeles, CA 90038-3144
 S. Mark Taper Foundation Health Center - 6043 Hollywood Blvd Los Angeles, CA 90028-5411
 The Center at Blessed Sacrament - 6636 Selma Ave Los Angeles, CA 90028-7115



37

NUMBER OF DELIVERY SITES IN CONGRESSIONAL DISTRICT

(main organization in bold)

● **LOS ANGELES LGBT CENTER**

Los Angeles Gay & Lesbian Center - 1625 Schrader Blvd Los Angeles, CA 90028-6213

Los Angeles LGBT Center - Weho - 8745 Santa Monica Blvd West Hollywood, CA 90069-4507

● **MISSION CITY COMMUNITY NETWORK, INC.**

Mission City Community Network - Glendale - 222 W Eulalia St Glendale, CA 91204-2849

Mission City Community Network- Hollywood-Santa Monica - 5300 Santa Monica Blvd Ste 202 Los Angeles, CA 90029-1258

● **NORTHEAST VALLEY HEALTH CORPORATION**

Children's Hospital Los Angeles - Beachwood House - 2471 N Beachwood Dr Los Angeles, CA 90068-3004

Childrens Hospital Los Angeles - Covenant House California - 1325 N Western Ave Los Angeles, CA 90027-5615

CHLA Division of Adolescent and Young Adult Medicine - 5000 W Sunset Blvd Ste 440 Los Angeles, CA 90027-5861

LAGLC Transitional Living Program - 1625 Schrader Blvd Los Angeles, CA 90028-6213

LAGLC Youth Center on Highland - 1220 N Highland Ave Los Angeles, CA 90038-1207

My Friend's Place - CHLA - 5850 Hollywood Blvd Los Angeles, CA 90028-5611

Saban Community Clinic -Hollywood Wilshire Health Center - 5205 Melrose Ave Los Angeles, CA 90038-3144

The Saban Community Clinic - The S. Mark Taper Foundation Health Center - 6043 Hollywood Blvd Los Angeles, CA 90028

● **QUEENSCARE HEALTH CENTERS**

QueensCare Health Centers - 4618 Fountain Ave Los Angeles, CA 90029-1830

● **ST ANTHONY MEDICAL CENTERS**

St. Anthony Medical Centers - Hollywood Site - 6368 Hollywood Blvd Los Angeles, CA 90028-6320