



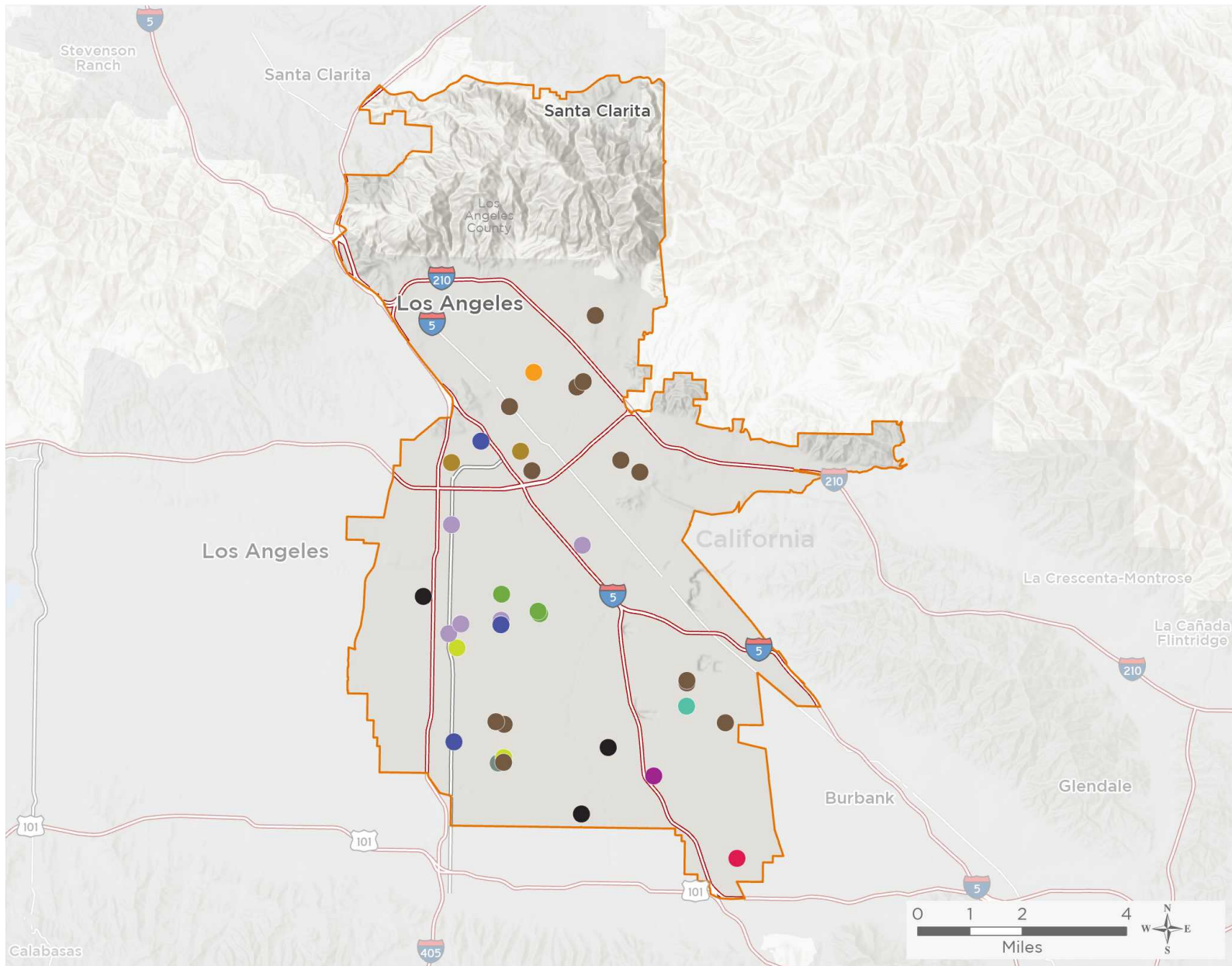
NATIONAL ASSOCIATION OF
Community Health Centers

Representative Tony Cárdenas

117th United States Congress

California's **29TH** Congressional District

The 12 federally-funded health center organizations with a presence in California's 29th Congressional District leverage **\$43,967,592** in federal investments to serve **338,623** patients.



47

NUMBER OF DELIVERY SITES IN CONGRESSIONAL DISTRICT

- Federally-funded site (each color represents one organization)
- 117th Congressional District Boundaries
- Major Highways
- Highways
- Major Roads
- County Boundaries
- City or Town

Notes | Delivery sites represent locations of organizations funded by the federal Health Center Program. Some locations may overlap due to scale or may otherwise not be visible when mapped. Federal investments represent the total funding from the federal Health Center Program to grantees with a presence in the state in 2019.

Sources | Federally-Funded Delivery Site Locations: data.HRSA.gov, November 16, 2020.
Health Center Patients and Federal Funding | 2019 Uniform Data System, Bureau of Primary Health Care, HRSA.

© National Association of Community Health Centers, 2021. For more information, please contact federalaffairs@nachc.org.



47

NUMBER OF DELIVERY SITES IN CONGRESSIONAL DISTRICT

(main organization in bold)

- AAA COMPREHENSIVE HEALTHCARE INC.**
AAA Comprehensive Healthcare - 7451 Lankershim Blvd North Hollywood, CA 91605-2803
- ALL FOR HEALTH HEALTH FOR ALL**
All For Health - North Hollywood - 5160 Vineland Ave Ste 109 North Hollywood, CA 91601-3888
- CENTER FOR FAMILY HEALTH & EDUCATION, INC.**
Center for Family Health & Education - Mobile Unit 1 - 8727 Van Nuys Blvd Panorama City, CA 91402-2451
Center for Family Health & Education, Inc - 8727 Van Nuys Blvd Ste 101 Panorama City, CA 91402-2463
Center for Family Health & Education, Inc. - 8727 Van Nuys Blvd Ste 103 Panorama City, CA 91402-2451
Center for Family Health & Education, Inc. - 8727 Van Nuys Blvd Ste 201 Panorama City, CA 91402-2483
Center for Family Health & Education, Inc. - 8727 Van Nuys Blvd Ste 203 Panorama City, CA 91402-2462
Center for Family Health and Education, Inc. - 8727 Van Nuys Blvd Ste 102 Panorama City, CA 91402-2400
Priority Care Medical Group - Panorama City - 8727 Van Nuys Blvd Ste 105 Panorama City, CA 91402-2467
Priority Care Medical Group - Van Nuys - 6850 Sepulveda Blvd Ste 210 Van Nuys, CA 91405-4446
Priority Care Medical Group Mission Hills - 14901 Rinaldi St Ste 202 Mission Hills, CA 91345-1254
Temporary Site - Medical Mobile Unit - 8727 Van Nuys Blvd Panorama City, CA 91402-2451
- COMMUNITY MEDICAL WELLNESS CENTERS, USA**
Community Medical Wellness Centers USA-Sylmar - 14117 Hubbard St Unit M Sylmar, CA 91342-4765
- COMPREHENSIVE COMMUNITY HEALTH CENTERS, INC.**
Comprehensive Community Health Centers, Inc-North Hollywood - 12157 Victory Blvd North Hollywood, CA 91606-3204
- EL PROYECTO DEL BARRIO, INC.**
Arleta Health Center - 8902 Woodman Ave Arleta, CA 91331-6401
El Proyecto del Barrio, Inc., Esperanza Clinic - 9140 Van Nuys Blvd Ste 207 Panorama City, CA 91402-6763
El Proyecto Dental Center - 8932 Woodman Ave Arleta, CA 91331-8021
- MISSION CITY COMMUNITY NETWORK, INC.**
Mission City Community Network - Parthenia - 15210 Parthenia St North Hills, CA 91343-5305
Mission City Community Network - Mission Hills - 10200 Sepulveda Blvd Ste 300 Mission Hills, CA 91345-3321
Mission City Community Network - SFV- Mobile II - 9919 Laurel Canyon Blvd Pacoima, CA 91331-3940
Mission City Community Network- Panorama City - 8771 Van Nuys Blvd Panorama City, CA 91402-2401
Mission City Community Network- SBHC - 9919 Laurel Canyon Blvd Pacoima, CA 91331-3940
Mission City Community Network- Sepulveda - 8527 Sepulveda Blvd North Hills, CA 91343-5824
Mission City Community Network, Inc. - 15206 Parthenia St North Hills, CA 91343-5305
- NORTHEAST VALLEY HEALTH CORPORATION**
Children's Hospital La Family Housing - 7817 Lankershim Blvd North Hollywood, CA 91605-2523



47

NUMBER OF DELIVERY SITES IN CONGRESSIONAL DISTRICT

(main organization in bold)

● **NORTHEAST VALLEY HEALTH CORPORATION, cont.**

- Los Angeles Mission College - 13356 Eldridge Ave Sylmar, CA 91342-3200
- Maclay Wellness Center - 12451 Gain St Pacoima, CA 91331-1642
- NEVHC DUI Program - 1036 N Maclay Ave San Fernando, CA 91340-1326
- Northeast Valley Health Corporation Mobile - 1172 N Maclay Ave San Fernando, CA 91340-1328
- Pacoima Health Center - 12756 Van Nuys Blvd Pacoima, CA 91331-1626
- Pacoima Women's Health Center - 12759 Van Nuys Blvd Pacoima, CA 91331-1627
- Pediatric Health & Wic Center - 7138 Van Nuys Blvd Van Nuys, CA 91405-3005
- San Fernando Health Center - 1600 San Fernando Rd San Fernando, CA 91340-3115
- San Fernando High School - Teen Health Center - 11051 Omelveny Ave San Fernando, CA 91340-4424
- Sun Valley Health Center - 7223 Fair Ave Sun Valley, CA 91352-4964
- Transitions to Wellness - 6551 Van Nuys Blvd Ste 201 Van Nuys, CA 91401-1490
- Transitions to Wellness - 7843 Lankershim Blvd North Hollywood, CA 91605-2523
- Van Nuys Adult Health Center - 14624 Sherman Way Fl 6 Van Nuys, CA 91405-2241

● **PEDIATRIC & FAMILY MEDICAL CENTER**

- Eisner Health at Panorama City - Pediatrics - 15253 Roscoe Blvd Panorama City, CA 91402-4401
- Eisner Health at Panorama City OB - 15251 Roscoe Blvd Panorama City, CA 91402-4401
- Eisner Health at Van Nuys - 6618 Van Nuys Blvd Van Nuys, CA 91405-4617

● **SAN FERNANDO COMMUNITY HOSPITAL**

- San Fernando Community Health Center - 732 Mott St, Ste 100 San Fernando, CA 91340-4240
- San Fernando Community Health Center - Mission Hills - 11134 Sepulveda Blvd Ste 110 Mission Hills, CA 91345-1114

● **SOUTHERN CALIFORNIA MEDICAL CENTER, INC.**

- SCMC Van Nuys - 14550 Haynes St Van Nuys, CA 91411-1613

● **VALLEY COMMUNITY HEALTHCARE**

- LAVC Student Health Center - 5800 Fulton Ave Fl 1 Valley Glen, CA 91401-4062
- North Hills Wellness Center - 9119 Haskell Ave North Hills, CA 91343-3121
- Valley Community Healthcare - 6801 Coldwater Canyon Ave North Hollywood, CA 91605-5162