



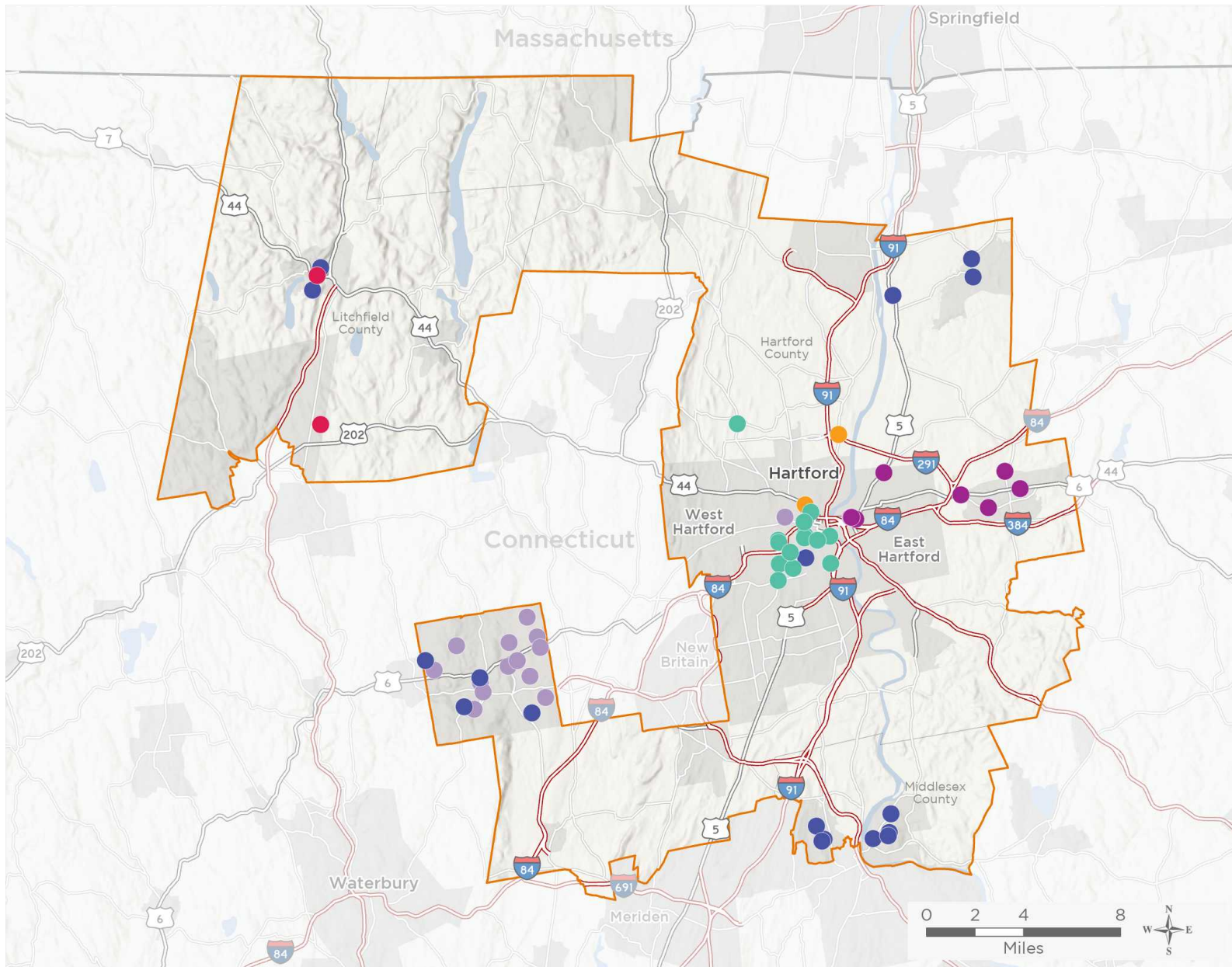
NATIONAL ASSOCIATION OF
Community Health Centers

Representative John B Larson

117th United States Congress

Connecticut's **1ST** Congressional District

The 7 federally-funded health center organizations with a presence in Connecticut's 1st Congressional District leverage **\$27,491,140** in federal investments to serve **179,858** patients.



66

NUMBER OF DELIVERY SITES IN CONGRESSIONAL DISTRICT

- Federally-funded site (each color represents one organization)
- 117th Congressional District Boundaries
- Major Highways
- Highways
- Major Roads
- County Boundaries
- City or Town

Notes | Delivery sites represent locations of organizations funded by the federal Health Center Program. Some locations may overlap due to scale or may otherwise not be visible when mapped. Federal investments represent the total funding from the federal Health Center Program to grantees with a presence in the state in 2019.

Sources | Federally-Funded Delivery Site Locations: data.HRSA.gov, November 16, 2020.
Health Center Patients and Federal Funding | 2019 Uniform Data System, Bureau of Primary Health Care, HRSA.

© National Association of Community Health Centers, 2021. For more information, please contact federalaffairs@nachc.org.



66

NUMBER OF DELIVERY SITES IN CONGRESSIONAL DISTRICT

(main organization in bold)

● **CHARTER OAK HEALTH CENTER, INC**

- A.I. Prince Technical School - 500 Brookfield St Hartford, CT 06106-3709
- Charter Oak Health Center - 401 New Britain Ave Hartford, CT 06106-3833
- Charter Oak Health Center Annex at 39 Grand Street - 39 Grand St Hartford, CT 06106-4607
- Charter Oak Health Center Bloomfield - 693 Bloomfield Ave Bloomfield, CT 06002-2489
- Charter Oak Health Center, Inc. - 21 Grand St Hartford, CT 06106-1541
- Charter Oak Health Center; 32 Grand Street - 32 Grand St Hartford, CT 06106-4658
- High Roads School of Hartford: High School - 245 Locust St Hartford, CT 06114-2008
- High Roads School of Hartford: Primary and Middle School - 757 New Britain Ave Hartford, CT 06106-3913
- House Of Bread - 27 Chestnut St Hartford, CT 06120-2810
- Immaculate Conception Shelter - 574 Park St Hartford, CT 06106-4617
- Open Hearth - 437 Sheldon St Hartford, CT 06106-1939
- Parkville Community Elementary School - 1755 Park St Hartford, CT 06106-2160
- Parkville Community School - 47 New Park Ave Hartford, CT 06106-2168
- South Park Inn - 75 Main St Hartford, CT 06106-1806
- Thomas J. McDonough Middle School - 111 Hillside Ave Hartford, CT 06106-3018
- YWCA Of The Hartford Region, Inc - 135 Broad St Hartford, CT 06105-3718

● **COMMUNITY HEALTH AND WELLNESS CENTER OF GREATER TORRINGTON, INCORPORATED**

- Community Health and Wellness Center - 10 Center St Winsted, CT 06098-1623
- Torrington Middle School - 200 Middle School Dr Torrington, CT 06790-3168

● **COMMUNITY HEALTH CENTER, INCORPORATED**

- Batcheller Elementary Education Center SBHC - 201 Pratt St Winsted, CT 06098-2061
- Bristol Central High School SBHC - 480 Wolcott St Bristol, CT 06010-6497
- Bristol Preparatory Academy/Adult Education Center SBHC - 210 Redstone Hill Rd STE 5 Bristol, CT 06010-7796
- Bristol Technical High School - 431 Minor St Bristol, CT 06010-2269
- Broad Brook Elementary SBHC - 14 Rye St Broad Brook, CT 06016-9552
- Brownstone Intermediate School SBHC - 314 Main St Portland, CT 06480-1877
- CHC of Hartford - 76 New Britain Ave Hartford, CT 06106-3305
- Community Health Center of Bristol - 395 N Main St Bristol, CT 06010-4924
- East Windsor High School SBHC - 76 S Main St East Windsor, CT 06088-9741
- East Windsor Middle School SBHC - 38 Main St Broad Brook, CT 06016-9602
- Gildersleeve Elementary School SBHC - 575 1/2 Main St Portland, CT 06480-1103
- Keigwin Middle School - SBHC - 99 Spruce St Middletown, CT 06457-1838
- Lawrence Elementary School SBHC - Kaplan Dr Middletown, CT 06457
- Middletown High School SBHC - 200 La Rosa Ln Middletown, CT 06457-2148
- Portland Middle and High School SBHC - 93 High St # 95 Portland, CT 06480-1656
- The Isabelle Pearson School SBHC - 2 Wetmore Ave Winsted, CT 06098-1242
- Valley View Elementary School SBHC - 81 High St Portland, CT 06480-1656



66

NUMBER OF DELIVERY SITES IN CONGRESSIONAL DISTRICT

(main organization in bold)

● **COMMUNITY HEALTH SERVICES, INCORPORATED**

Community Health Services at Windsor - 503 Windsor Ave Windsor, CT 06095-4015

Community Health Services, Inc. - 500 Albany Ave Hartford, CT 06120-2508

● **FIRST CHOICE HEALTH CENTERS, INC.**

444 Center Street, 3rd fl, Manchester CHR - 444 Center St Manchester, CT 06040-3926

FCHC Mobile Health Services - 94 Connecticut Blvd East Hartford, CT 06108-3013

First Choice @ Howell Cheney Technical High School - 791 Middle Tpke W Manchester, CT 06040-1819

First Choice @ Illing Middle School - 227 Middle Tpke E Manchester, CT 06040-4261

First Choice Health Centers - 110 Connecticut Blvd East Hartford, CT 06108-3013

First Choice Health Centers - 265 Ellington Rd East Hartford, CT 06108-1176

First Choice Health Centers - 94 Connecticut Blvd East Hartford, CT 06108-3013

First Choice Health Centers (Suite 230) - 150 N Main St Manchester, CT 06042-2086

First Choice Health Centers (Suite 240) - 150 N Main St Manchester, CT 06042-2086

First Choice@809 Main Street - 809 Main St East Hartford, CT 06108-3117

First Choice@92 Connecticut Blvd - 92 Connecticut Blvd East Hartford, CT 06108-3013

● **MASSACHUSETTS LEAGUE OF COMMUNITY HEALTH CENTERS INC**

Community Health Services - 500 Albany Ave Hartford, CT 06120-2508

● **WHEELER CLINIC, INC.**

Bristol Central High School - 480 Wolcott St Bristol, CT 06010-6497

Bristol Eastern High School - 632 King St Bristol, CT 06010-9202

Bristol Health & Wellness Behavioral Health Center - 225 N Main St Bristol, CT 06010-4926

Bristol Preparatory Academy - 210 Redstone Hill Rd Bristol, CT 06010-7796

Chippens Hill Middle School - 551 Peacedale St Bristol, CT 06010-8939

Edgewood School - 345 Mix St Bristol, CT 06010-2705

Greene-Hills School - 718 Pine St Bristol, CT 06010-6923

Hartford Family Health & Wellness Center - 43 Woodland St Hartford, CT 06105-2363

Hubbell School - 90 W Washington St Bristol, CT 06010-5485

Ivy Drive School - 160 Ivy Dr Bristol, CT 06010-3303

Mountain View School - 71 Vera Rd Bristol, CT 06010-4857

Northeast Middle School - 530 Stevens St Bristol, CT 06010-2587

South Side School - 21 Tuttle Rd Bristol, CT 06010-9475

Stafford School - 212 Louisiana Ave Bristol, CT 06010-4456

West Bristol School - 500 Clark Ave Bristol, CT 06010-9601

Wheeler Family Health and Wellness Center - 49 - 49 Woodland St Hartford, CT 06105-2337

Wheeler Health and Wellness Center - 10 N Main St Bristol, CT 06010-8122