



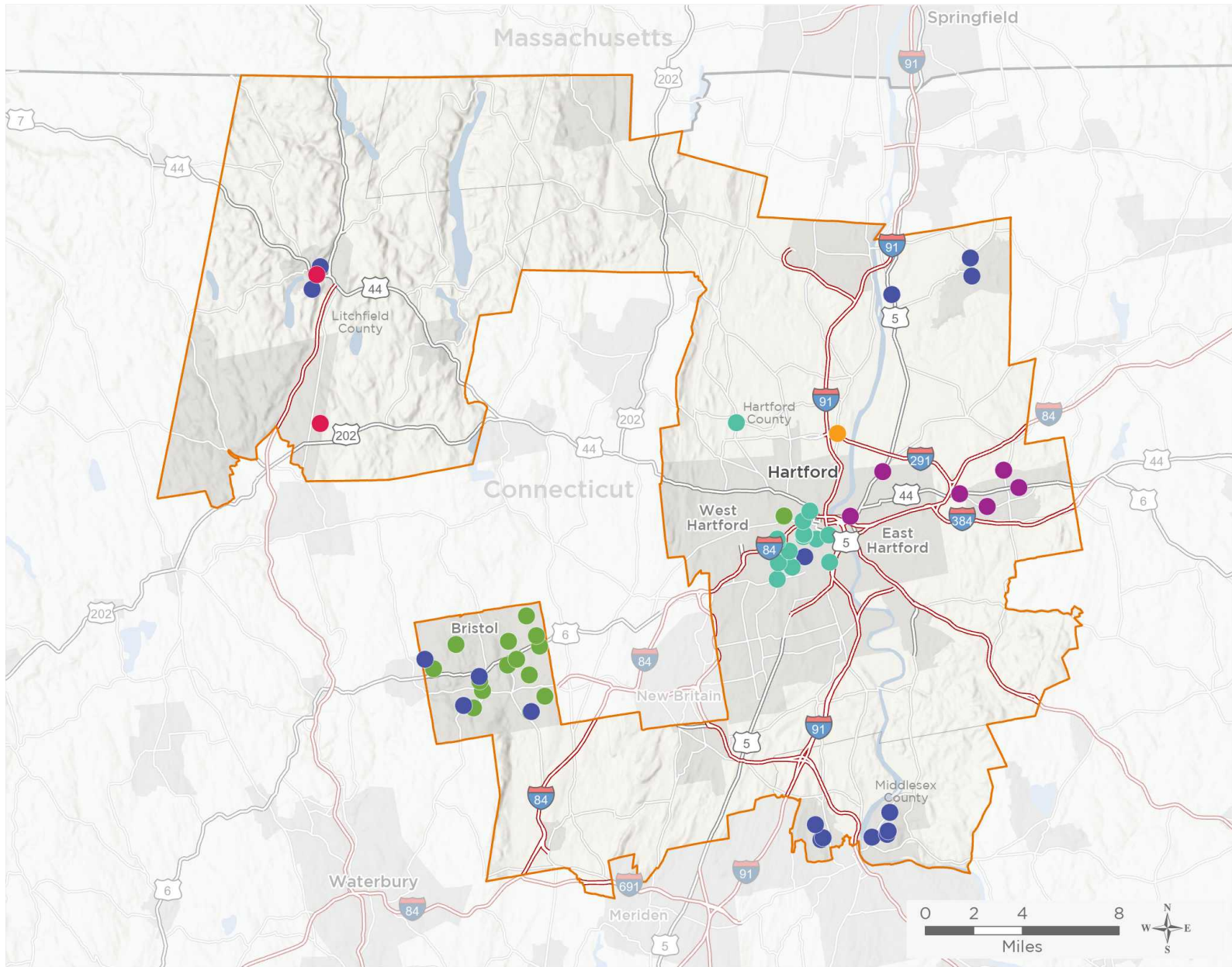
NATIONAL ASSOCIATION OF
Community Health Centers

Representative John B Larson

117th United States Congress

Connecticut's **1ST** Congressional District

The 6 federally-funded health center organizations with a presence in Connecticut's 1st Congressional District leverage **\$26,076,939** in federal investments to serve **177,905** patients.



61

NUMBER OF DELIVERY SITES IN CONGRESSIONAL DISTRICT

- Federally-funded site (each color represents one organization)
- 117th Congressional District Boundaries
- Major Highways
- Highways
- Major Roads
- County Boundaries
- City or Town

Notes | Delivery sites represent locations of organizations funded by the federal Health Center Program. Some locations may overlap due to scale or may otherwise not be visible when mapped. Federal investments represent the total funding from the federal Health Center Program to grantees with a presence in the state in 2019.

Sources | Federally-Funded Delivery Site Locations: data.HRSA.gov, November 16, 2020.
Health Center Patients and Federal Funding | 2019 Uniform Data System, Bureau of Primary Health Care, HRSA.



61

NUMBER OF DELIVERY SITES IN CONGRESSIONAL DISTRICT

(main organization in bold)

● **CHARTER OAK HEALTH CENTER, INC**

A.I. Prince Technical School - 500 Brookfield St Hartford, CT 06106-3709
Charter Oak Health Center - 401 New Britain Ave Hartford, CT 06106-3833
Charter Oak Health Center Annex at 39 Grand Street - 39 Grand St Hartford, CT 06106-4607
Charter Oak Health Center Bloomfield - 693 Bloomfield Ave Bloomfield, CT 06002-2489
Charter Oak Health Center, Inc. - 21 Grand St Hartford, CT 06106-1541
Charter Oak Health Center; 32 Grand Street - 32 Grand St Hartford, CT 06106-4658
High Roads School of Hartford: High School - 245 Locust St Hartford, CT 06114-2008
High Roads School of Hartford: Primary and Middle School - 757 New Britain Ave Hartford, CT 06106-3913
House Of Bread - 27 Chestnut St Hartford, CT 06120-2810
Immaculate Conception Shelter - 574 Park St Hartford, CT 06106-4617
Open Hearth - 437 Sheldon St Hartford, CT 06106-1939
Parkville Community Elementary School - 1755 Park St Hartford, CT 06106-2160
Parkville Community School - 47 New Park Ave Hartford, CT 06106-2168
South Park Inn - 75 Main St Hartford, CT 06106-1806
Thomas J. McDonough Middle School - 111 Hillside Ave Hartford, CT 06106-3018
YWCA Of The Hartford Region, Inc - 135 Broad St Hartford, CT 06105-3718

● **COMMUNITY HEALTH AND WELLNESS CENTER OF GREATER TORRINGTON, INC.**

Community Health and Wellness Center - 10 Center St Winsted, CT 06098-1623
Torrington Middle School - 200 Middle School Dr Torrington, CT 06790-3168

● **COMMUNITY HEALTH CENTER, INCORPORATED**

Batcheller Elementary Education Center SBHC - 201 Pratt St Winsted, CT 06098-2061
Bristol Central High School SBHC - 480 Wolcott St Bristol, CT 06010-6497
Bristol Preparatory Academy/Adult Education Center SBHC - 210 Redstone Hill Rd STE 5 Bristol, CT 06010-7796
Bristol Technical High School - 431 Minor St Bristol, CT 06010-2269
Broad Brook Elementary SBHC - 14 Rye St Broad Brook, CT 06016-9552
Brownstone Intermediate School SBHC - 314 Main St Portland, CT 06480-1877
CHC of Hartford - 76 New Britain Ave Hartford, CT 06106-3305
Community Health Center of Bristol - 395 N Main St Bristol, CT 06010-4924
East Windsor High School SBHC - 76 S Main St East Windsor, CT 06088-9741
East Windsor Middle School SBHC - 38 Main St Broad Brook, CT 06016-9602
Gildersleeve Elementary School SBHC - 575 1/2 Main St Portland, CT 06480-1103
Keigwin Middle School - SBHC - 99 Spruce St Middletown, CT 06457-1838
Lawrence Elementary School SBHC - Kaplan Dr Middletown, CT 06457
Middletown High School SBHC - 200 La Rosa Ln Middletown, CT 06457-2148
Portland Middle and High School SBHC - 93 High St # 95 Portland, CT 06480-1656
The Isabelle Pearson School SBHC - 2 Wetmore Ave Winsted, CT 06098-1242
Valley View Elementary School SBHC - 81 High St Portland, CT 06480-1656

● **COMMUNITY HEALTH SERVICES, INCORPORATED**

Community Health Services at Windsor - 503 Windsor Ave Windsor, CT 06095-4015



61

NUMBER OF DELIVERY SITES IN CONGRESSIONAL DISTRICT

(main organization in bold)

● **FIRST CHOICE HEALTH CENTERS, INC.**

444 Center Street, 3rd fl, Manchester CHR - 444 Center St Manchester, CT 06040-3926
FCHC Mobile Health Services - 94 Connecticut Blvd East Hartford, CT 06108-3013
First Choice @ Howell Cheney Technical High School - 791 Middle Tpke W Manchester, CT 06040-1819
First Choice @ Illing Middle School - 227 Middle Tpke E Manchester, CT 06040-4261
First Choice Health Centers - 265 Ellington Rd East Hartford, CT 06108-1176
First Choice Health Centers - 94 Connecticut Blvd East Hartford, CT 06108-3013
First Choice Health Centers (Suite 230) - 150 N Main St Manchester, CT 06042-2086
First Choice Health Centers (Suite 240) - 150 N Main St Manchester, CT 06042-2086

● **WHEELER CLINIC, INC.**

Bristol Central High School - 480 Wolcott St Bristol, CT 06010-6497
Bristol Eastern High School - 632 King St Bristol, CT 06010-9202
Bristol Health & Wellness Behavioral Health Center - 225 N Main St Bristol, CT 06010-4926
Bristol Preparatory Academy - 210 Redstone Hill Rd Bristol, CT 06010-7796
Chippens Hill Middle School - 551 Peacedale St Bristol, CT 06010-8939
Edgewood School - 345 Mix St Bristol, CT 06010-2705
Greene-Hills School - 718 Pine St Bristol, CT 06010-6923
Hartford Family Health & Wellness Center - 43 Woodland St Hartford, CT 06105-2363
Hubbell School - 90 W Washington St Bristol, CT 06010-5485
Ivy Drive School - 160 Ivy Dr Bristol, CT 06010-3303
Mountain View School - 71 Vera Rd Bristol, CT 06010-4857
Northeast Middle School - 530 Stevens St Bristol, CT 06010-2587
South Side School - 21 Tuttle Rd Bristol, CT 06010-9475
Stafford School - 212 Louisiana Ave Bristol, CT 06010-4456
West Bristol School - 500 Clark Ave Bristol, CT 06010-9601
Wheeler Family Health and Wellness Center - 49 - 49 Woodland St Hartford, CT 06105-2337
Wheeler Health and Wellness Center - 10 N Main St Bristol, CT 06010-8122