



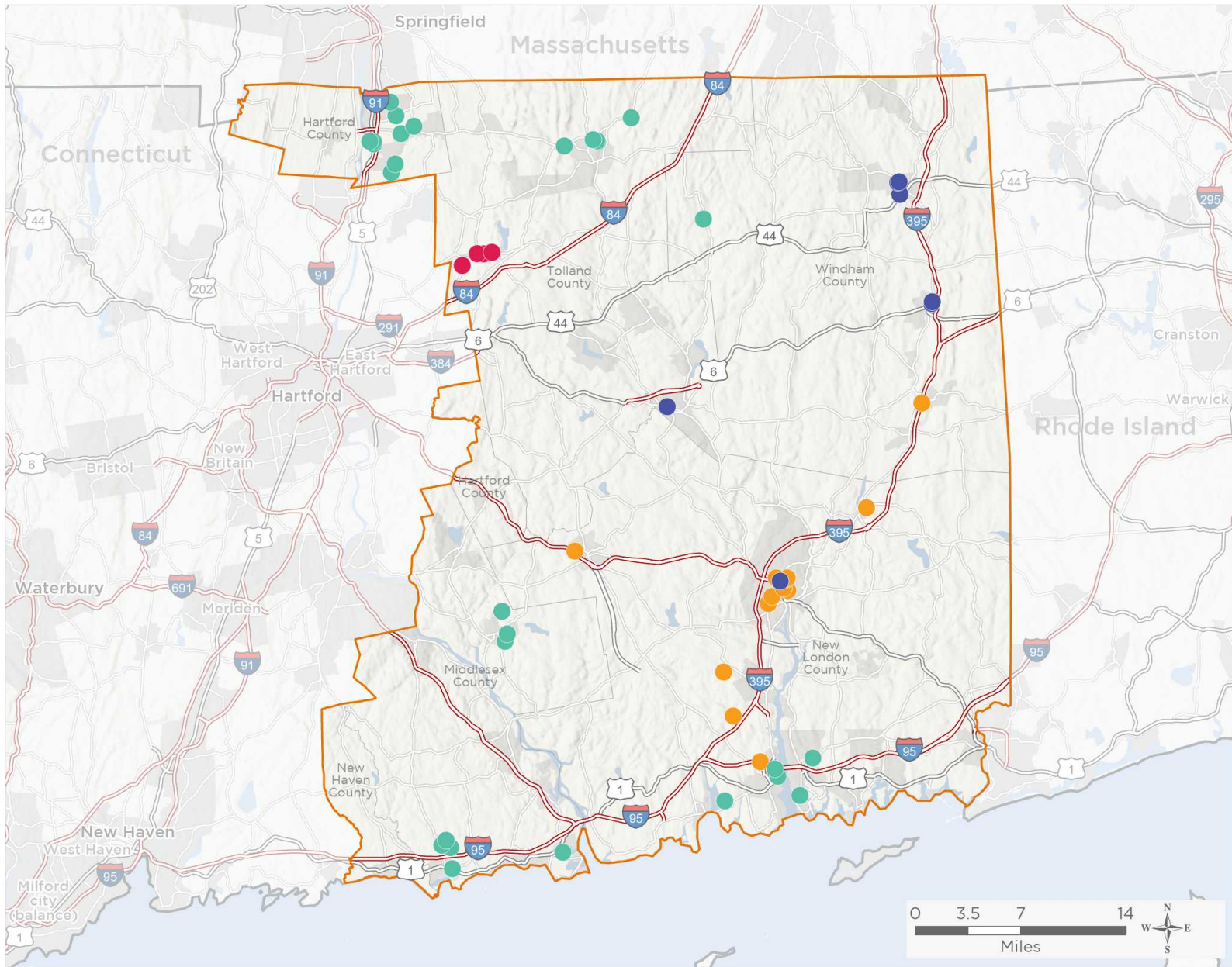
NATIONAL ASSOCIATION OF
Community Health Centers

Representative Joe Courtney

117th United States Congress

Connecticut's **2ND** Congressional District

The 4 federally-funded health center organizations with a presence in Connecticut's 2nd Congressional District leverage **\$17,887,311** in federal investments to serve **163,370** patients.



53

NUMBER OF DELIVERY SITES IN CONGRESSIONAL DISTRICT

- ● ● ● Federally-funded site (each color represents one organization)
- 117th Congressional District Boundaries
- Major Highways
- Highways
- Major Roads
- County Boundaries
- City or Town

Notes | Delivery sites represent locations of organizations funded by the federal Health Center Program. Some locations may overlap due to scale or may otherwise not be visible when mapped. Federal investments represent the total funding from the federal Health Center Program to grantees with a presence in the state in 2019.

Sources | Federally-Funded Delivery Site Locations: data.HRSA.gov, November 16, 2020.
Health Center Patients and Federal Funding | 2019 Uniform Data System, Bureau of Primary Health Care, HRSA.

© National Association of Community Health Centers, 2021. For more information, please contact federalaffairs@nachc.org.



53

NUMBER OF DELIVERY SITES IN CONGRESSIONAL DISTRICT

(main organization in bold)

● **COMMUNITY HEALTH CENTER, INCORPORATED**

Ashford School SBHC - 440 Westford Rd Ashford, CT 06278-2538
Community Health Center of Groton - 481 Gold Star Hwy Ste 100 Groton, CT 06340-6702
Community Health Center Of Clinton - 114 E Main St Clinton, CT 06413-2131
Community Health Center Of Old Saybrook - 263 Main St Old Saybrook, CT 06475-2326
Dual Language and Arts Elementary School SBHC - 51 Daniels Ave Waterford, CT 06385-2629
Eagle Academy SBHC - 1270 Enfield St Enfield, CT 06082-4919
East Haddam Elementary School SBHC - 45 Joe Williams Rd Moodus, CT 06469-1128
Edgar H Parkman School SBHC - 165 Weymouth Rd Enfield, CT 06082-6218
Eli Whitney School SBHC - 94 Middle Rd Enfield, CT 06082-4594
Eliot Middle School-SBHC - 69 Fairy Dell Rd Clinton, CT 06413-2403
Enfield High School SBHC - 1264 Enfield St Enfield, CT 06082-4947
Enfield Street School SBHC - 1318 Enfield St Enfield, CT 06082-4942
Hazardville Memorial School SBHC - 68 N Maple St Enfield, CT 06082-3904
Henry Barnard School SBHC - 27 Shaker Rd Enfield, CT 06082-3100
John F Kennedy Middle School SBHC - 155 Raffia Rd Enfield, CT 06082-5691
Lewin G Joel School SBHC - 137A Glenwood Rd Clinton, CT 06413-1425
Marine Science Magnet High School SBHC - 130 Shennecossett Rd Groton, CT 06340-5117
Nathan Hale Ray High School SBHC - 15 School Rd Moodus, CT 06469-1167
Nathan Hale Ray Middle School SBHC - 73 Clark Gates Rd Moodus, CT 06469-1222
Prudence Crandall School SBHC - 150 Brainard Rd Enfield, CT 06082-2649
Stafford Elementary School - 11 Levinthal Run Stafford Springs, CT 06076-3744
Stafford High School-SBHC - 145 Orcuttville Rd Stafford Springs, CT 06076-3730
Stafford Middle School - 21 Levinthal Run Stafford Springs, CT 06076-3744
Staffordville Elementary School-SBHC - 21 Lyons Rd Stafford Springs, CT 06076-3917
The Interdistrict School For Arts And Communication (Isaac) - SBHC - 190 Governor Winthrop Blvd New London, CT 06320-6612
The Morgan School SBHC - 71 Killingworth Tpke Clinton, CT 06413-1359
West Stafford Elementary School-SBHC - 153 W Stafford Rd Stafford Springs, CT 06076-1017
WYA New London Homeless Hospitality Center - 327 Huntington St New London, CT 06320-6214

● **FIRST CHOICE HEALTH CENTERS, INC.**

First Choice @ Maple Street School - 20 Maple St Vernon, CT 06066-3026
First Choice @ Rockville High School - 70 Loveland Hill Rd Vernon Rockville, CT 06066-6836
First Choice Health Centers - 3 Prospect St Vernon Rockville, CT 06066-3215
First Choice@94 Union Street - 94 Union St Vernon, CT 06066-3131

● **GENERATIONS FAMILY HEALTH CENTER, INC.**

Across The Smiles Mobile Dental - Mobile Dental Van Site Danielson, CT 06239-3005
Backus Mobile Van - 330 Washington St Norwich, CT 06360-2700
Generations Family Health Center - School Based Health Center at Putnam High School - 152 Woodstock Ave Putnam, CT 06260-1432
Generations Family Health Center - School BasA4110:A4150ed Health Center at Putnam Public Schools - 35 Wicker St Putnam, CT 06260-1443



53

NUMBER OF DELIVERY SITES IN CONGRESSIONAL DISTRICT

(main organization in bold)

● **GENERATIONS FAMILY HEALTH CENTER, INC., cont.**

Generations Family Health Center, Inc. - Danielson - 42 Reynolds St Danielson, CT 06239-2917

Generations Family Health Center, Inc. - Putnam - 202 Pomfret St Putnam, CT 06260-1833

Generations Fhc - Norwich - 330 Washington St Ste 510 Norwich, CT 06360-2733

● **UNITED COMMUNITY SERVICES INC**

Montville High School - School Based Health Center - 800 Old Colchester Rd Oakdale, CT 06370-2608

Norwich Free Academy - School Based Health Center - 305 Broadway Norwich, CT 06360-3547

Norwich Technical High School - School Based Health Center - 7 Mahan Dr Norwich, CT 06360-2425

UCFS at Global Studies Magnet Middle School - 15 Teachers Dr Norwich, CT 06360-4029

UCFS at Kelly STEAM Magnet Middle School - 25 Mahan Dr Norwich, CT 06360-2432

UCFS at Stanton Network Elementary School - 386 New London Tpke Norwich, CT 06360-5337

UCFS at Waterford Country School - 78 Hunts Brook Rd Quaker Hill, CT 06375-1009

UCFS Behavioral Health Center - Colchester - 212 Upton Rd Colchester, CT 06415-2756

UCFS Behavioral Health Center - New London - 351 N Frontage Rd Ste 24 New London, CT 06320-2628

UCFS Eldercare Health Center - 165 Mckinley Ave Norwich, CT 06360-3509

UCFS Health Center - Norwich - 47 Town St Norwich, CT 06360-2323

UCFS Health Center - Plainfield - 120 Plainfield Rd Moosup, CT 06354-1632

UCFS Health Center Griswold - 226 E Main St Griswold, CT 06351-2110