



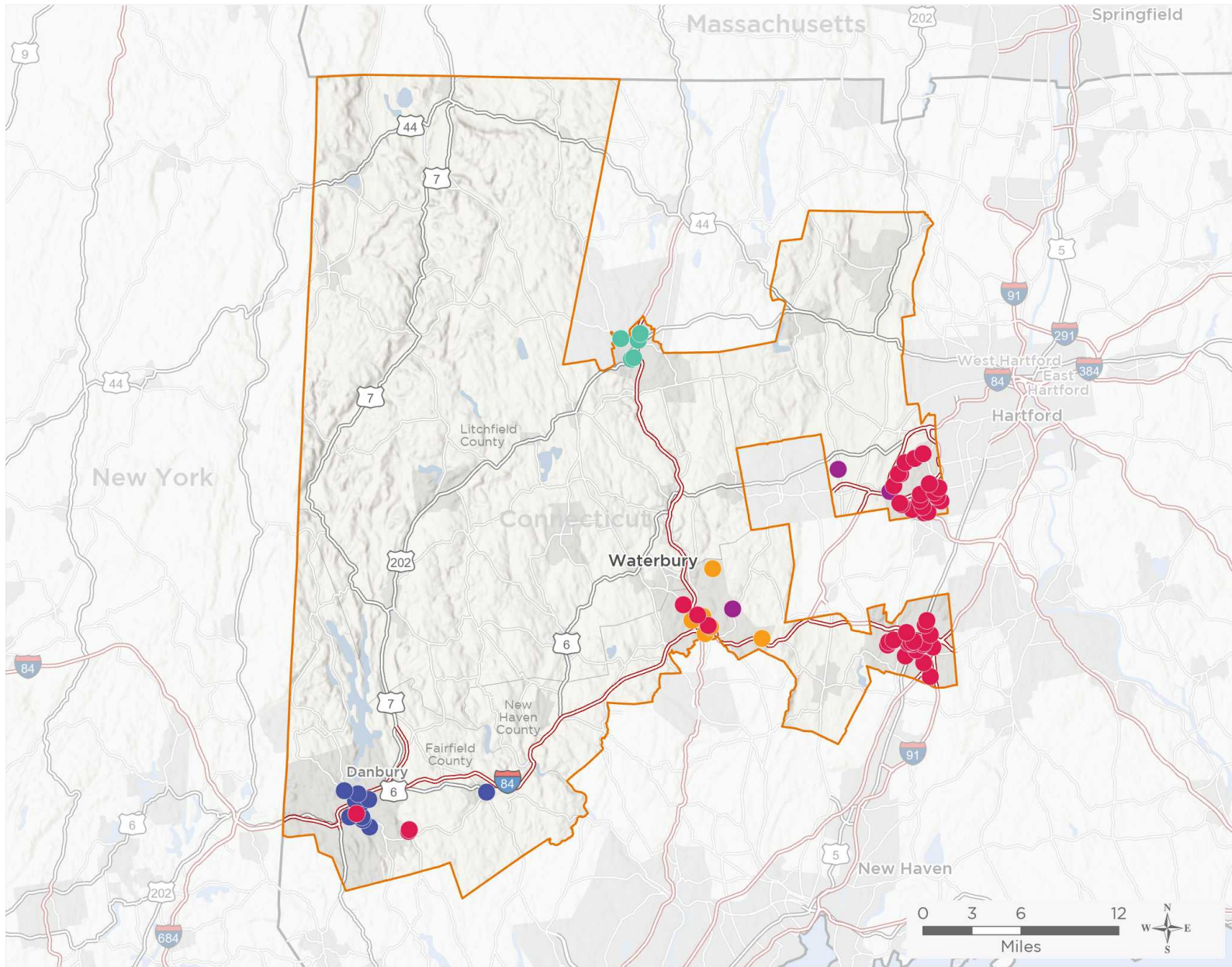
NATIONAL ASSOCIATION OF
Community Health Centers

Representative Jahana Hayes

117th United States Congress








Connecticut's **5TH** Congressional District

The 5 federally-funded health center organizations with a presence in Connecticut's 5th Congressional District leverage **\$19,084,952** in federal investments to serve **156,282** patients.



67

NUMBER OF DELIVERY SITES IN CONGRESSIONAL DISTRICT

-  Federally-funded site (each color represents one organization)
-  117th Congressional District Boundaries
-  Major Highways
-  Highways
-  Major Roads
-  County Boundaries
-  City or Town

Notes | Delivery sites represent locations of organizations funded by the federal Health Center Program. Some locations may overlap due to scale or may otherwise not be visible when mapped. Federal investments represent the total funding from the federal Health Center Program to grantees with a presence in the state in 2019.

Sources | Federally-Funded Delivery Site Locations: data.HRSA.gov, November 16, 2020.
Health Center Patients and Federal Funding | 2019 Uniform Data System, Bureau of Primary Health Care, HRSA.

© National Association of Community Health Centers, 2021. For more information, please contact federalaffairs@nachc.org.



NUMBER OF DELIVERY SITES IN CONGRESSIONAL DISTRICT

(main organization in bold)

● **COMMUNITY HEALTH AND WELLNESS CENTER OF GREATER TORRINGTON, INC.**

- Community Health and Wellness Center of Greater Torrington - 469 Migeon Ave Torrington, CT 06790-4643
- FISH Torrington Emergency Shelter - 332 S Main St Torrington, CT 06790-6767
- Oliver Wolcott Vocational Technical School - 75 Oliver St Torrington, CT 06790-3859
- Sullivan Senior Center - 88 E Albert St Torrington, CT 06790-6522
- Torrington High School - 50 Major Besse Dr Torrington, CT 06790-3721

● **COMMUNITY HEALTH CENTER, INC.**

- Benjamin Franklin Elementary School - SBHC - 426 W Main St Meriden, CT 06451-3802
- Bethel High School SBHC - 300 Whittlesey Dr Bethel, CT 06801-1517
- Bethel Middle School SBHC - 600 Whittlesey Dr Bethel, CT 06801-1531
- Brass City School SBHC - 289 Willow St Waterbury, CT 06710-1515
- Brookside School SBHC - 505 S Main St New Britain, CT 06051-4007
- Casimir Pulaski Elementary School - SBHC - 100 Clearview Ave Meriden, CT 06450-6492
- Chamberlain Elementary School SBHC - 120 Newington Ave New Britain, CT 06051-2119
- Community Health Center of Waterbury - 51 N Elm St Waterbury, CT 06702-1545
- Danbury City Shelter WYA - 41 New St Danbury, CT 06810-6512
- East Side Community Center - YWCA - 600 East St New Britain, CT 06051-2132
- Frank J Diloreto Elementary School SBHC - 732 Slater Rd New Britain, CT 06053-2239
- Friendship Service Center of New Britain - 241 Arch St New Britain, CT 06051-2518
- Gaffney Elementary School - SBHC - 322 Slater Rd New Britain, CT 06053-3458
- Goodwin Technical High School SBHC - 735 Slater Rd New Britain, CT 06053-2200
- Hanover Elementary School - SBHC - 208 E Main St Meriden, CT 06450-5607
- Holmes Elementary School SBHC - 2150 Stanley St New Britain, CT 06053-1566
- Israel Putnam Elementary School - SBHC - 133 Parker Ave Meriden, CT 06450-5925
- Jefferson Elementary School SBHC - 140 Horseplain Rd New Britain, CT 06053-1678
- John Barry Elementary School - SBHC - 124 Columbia St Meriden, CT 06451-3171
- Kaynor Technical High School SBHC - 43 Tompkins St Waterbury, CT 06708-1416
- Lincoln Elementary School SBHC - 145 Steele St New Britain, CT 06052-1555
- Lincoln Middle School - SBHC - 164 Centennial Ave Meriden, CT 06451-3707
- Maloney High School - SBHC - 121 Gravel St Meriden, CT 06450-4611
- Meri Care Dental Center - 165 Miller St Meriden, CT 06450-4482
- Meriden Head Start SBHC - 398 Liberty St Meriden, CT 06450-4529
- Nathan Hale Elementary School - SBHC - 277 Atkins Street Ext Meriden, CT 06450-3405
- New Britain High School - SBHC - 110 Mill St New Britain, CT 06051-3413
- Northend Elementary School SBHC - 160 Bassett St New Britain, CT 06051-3419
- Platt High School - SBHC - 220 Coe Ave Meriden, CT 06451-3812
- Pulaski Middle School - 757 Farmington Ave New Britain, CT 06053-1364
- Roger Sherman Elementary School - SBHC - 64 N Pearl St Meriden, CT 06450-4419
- Roosevelt Middle School SBHC - 40 Goodwin St New Britain, CT 06051-2814
- Slade Middle School SBHC - 183 Steele St New Britain, CT 06052-1555
- Smalley Academy SBHC - 175 West St New Britain, CT 06051-1415
- Smith Elementary School SBHC - 142 Rutherford St New Britain, CT 06051-3234



67

NUMBER OF DELIVERY SITES IN CONGRESSIONAL DISTRICT

(main organization in bold)

● **COMMUNITY HEALTH CENTER, INC., cont.**

Thomas Edison Magnet Middle School - 1355 N Broad St Meriden, CT 06450-2438
Thomas Hooker Elementary School SBHC - 70 Overlook Dr Meriden, CT 06450-6933
Vance Elementary School SBHC - 183 Vance St New Britain, CT 06052-1634
Venture Academy - 883 Paddock Ave Meriden, CT 06450-7044
Washington Middle School - SBHC - 1225 N Broad St Meriden, CT 06450-2479
Wya At Crysalis - Undisclosed Address Meriden, CT
Wya At Prudence Crandall Center - Undisclosed Address New Britain, CT
Wya At Shelter Now - 43 Saint Casimir Dr Meriden, CT 06450-5729

● **CONNECTICUT INSTITUTE FOR COMMUNITIES, INC.**

Broadview Middle School - 72 Hospital Ave Danbury, CT 06810-6021
CIFC/CHCGD Mobile Health Unit - 120 Main St Danbury, CT 06810-7834
Danbury High School - 43 Clapboard Ridge Rd Danbury, CT 06811-4529
Ellsworth Avenue Elementary School Dental Suite - 53 Ellsworth Ave Danbury, CT 06810-5948
GDCHC HATS Satellite Site - 21 Hayestown Ave Danbury, CT 06811-4819
GDCHC Main Street Satellite. Central Suite - 70 Main St Danbury, CT 06810-7832
GDCHC West Street Satellite - 152 West St Ste se-1 Danbury, CT 06810-3308
Greater Danbury Community Health Center, Suite 103/104 - 57 North St Danbury, CT 06810-5660
Newtown Middle School - 11 Queen St Newtown, CT 06470-2121
Rogers Park Middle School - Memorial Dr Danbury, CT 06810

● **STAYWELL HEALTH CARE, INC.**

StayWell Health Center - 402 E Main St Waterbury, CT 06702-1701
StayWell Health Center at St. V's - 114 Benedict St Waterbury, CT 06706-1007
StayWell Health Center at Western CT Mental Health Network - 95 Thomaston Ave Waterbury, CT 06702-1007
StayWell School Based Health Center at Driggs - 77 Woodlawn Ter Waterbury, CT 06710-1721
Wallace School Based Health Center - 3465 E Main St Waterbury, CT 06705-3815
Wilby School-Based Health Center - 568 Bucks Hill Rd Waterbury, CT 06704-1270

● **WHEELER CLINIC, INC.**

Plainville Family Health and Wellness Center - 91 Northwest Dr Plainville, CT 06062-1534
Waterbury Health & Wellness Center - 855 Lakewood Rd Waterbury, CT 06704-5408
Wheeler Health & Wellness Center - New Britain - 75 N Mountain Rd New Britain, CT 06053-3468