



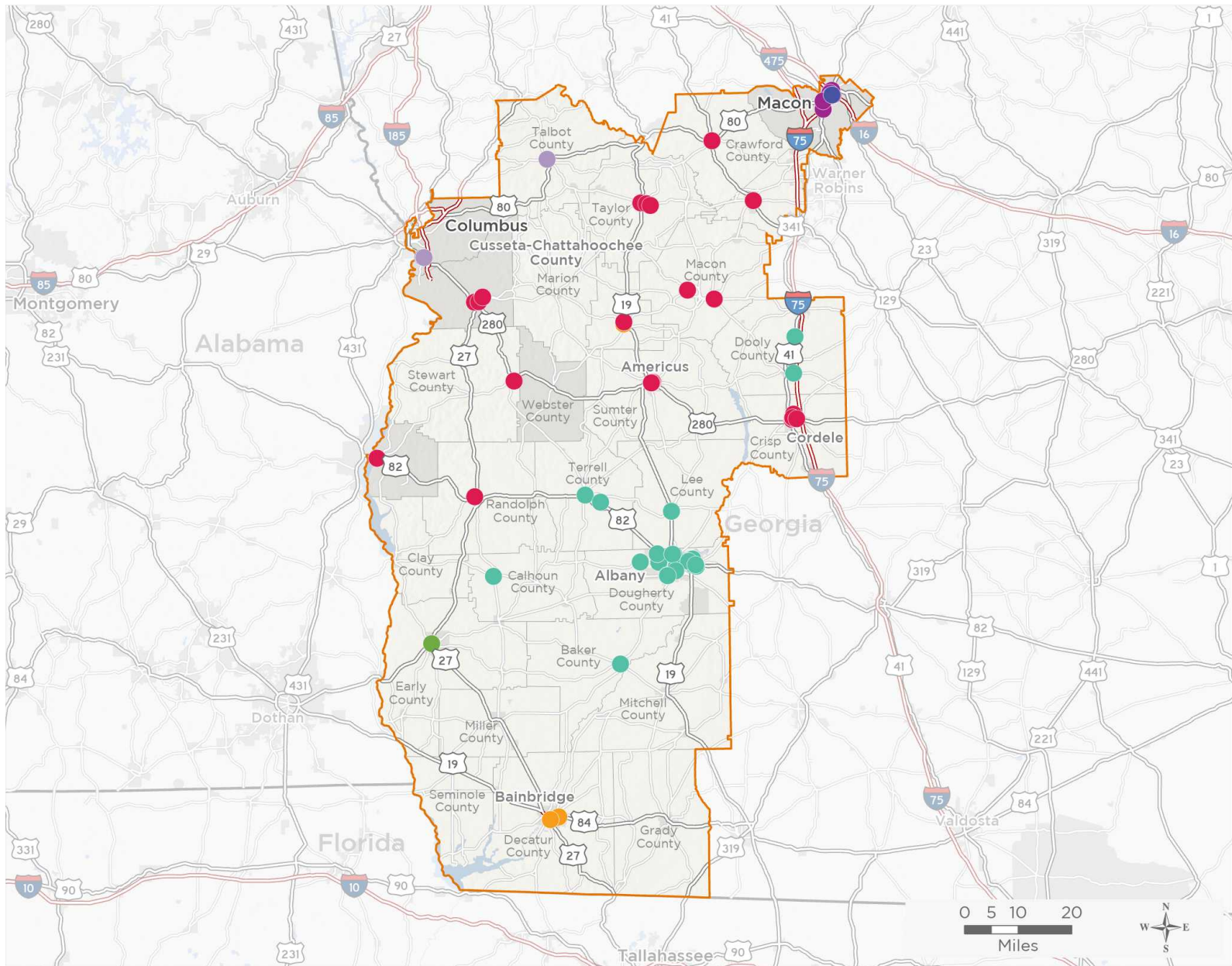
NATIONAL ASSOCIATION OF
Community Health Centers

Representative Sanford Bishop

117th United States Congress

Georgia's 2ND Congressional District

The 7 federally-funded health center organizations with a presence in Georgia's 2nd Congressional District leverage **\$38,376,989** in federal investments to serve **203,877** patients.



67

NUMBER OF DELIVERY SITES IN CONGRESSIONAL DISTRICT

- ● ● ● Federally-funded site (each color represents one organization)
- 117th Congressional District Boundaries
- Major Highways
- Highways
- Major Roads
- County Boundaries
- City or Town

Notes | Delivery sites represent locations of organizations funded by the federal Health Center Program. Some locations may overlap due to scale or may otherwise not be visible when mapped. Federal investments represent the total funding from the federal Health Center Program to grantees with a presence in the state in 2019.

Sources | Federally-Funded Delivery Site Locations: data.HRSA.gov, November 16, 2020.
Health Center Patients and Federal Funding | 2019 Uniform Data System, Bureau of Primary Health Care, HRSA.

© National Association of Community Health Centers, 2021. For more information, please contact federalaffairs@nachc.org.



NUMBER OF DELIVERY SITES IN CONGRESSIONAL DISTRICT

(main organization in bold)

● **ALBANY AREA PRIMARY HEALTH CARE, INC**

- AAPHC Glover Dental Center - 2607 Gillionville Rd Albany, GA 31707-3003
- AAPHC Northwest Family Medical and Dental Center - 2403 Osler Ct Ste A Albany, GA 31707-0205
- AAPHC Renaissance Center - 2403 Osler Ct Ste B Albany, GA 31707-0205
- AAPHC Womens Health Center - 810 13th Ave Albany, GA 31701-1388
- Albany Area Laboratory - 1711 E Broad Ave Albany, GA 31705-2311
- Albany Middle School-Based Health Center - 1700 Cordell Ave Albany, GA 31705-1497
- Alice Coachman Elementary School-Based Health Center - 1425 W Oakridge Dr Albany, GA 31707-5306
- Baker County Primary Health Care - 327 Sunset Ave SW Ste 3 Newton, GA 39870-7343
- Dawson Medical Center - 420 Johnson St SE Dawson, GA 39842-1523
- Dooly County School-Based Health Center - 11949 US Highway 41 Pinehurst, GA 31070-7467
- East Albany Medical Center - 1712 E Broad Ave Ste A Albany, GA 31705-2611
- East Albany Pediatric and Adolescent Center - 1712 E Broad Ave Ste C Albany, GA 31705-2611
- Edison Medical Center - 19519 Hartford St Edison, GA 39846-5803
- Hotz Scoggins Family Medical Center - 401 S Madison St Albany, GA 31701-3111
- Lee Medical Arts Center - 235 Walnut Ave S Leesburg, GA 31763-4367
- Live Oak Elementary School-Based Health Center - 4529 Gillionville Rd Albany, GA 31721-9566
- Mirian Worthy Women's Health Center - 2100 Palmyra Rd Albany, GA 31701-1320
- Robert Harvey Elementary School-Based Health Center - 1305 E 2nd Ave Albany, GA 31705-1315
- Rural HIV Clinic - 2202 E Oglethorpe Blvd Albany, GA 31705-2940
- S. Trussell Medical Center - 1212 E Union St Vienna, GA 31092-7545
- South Albany Medical Center - 1300 Newton Rd Albany, GA 31701-3424
- Terrell County School-Based Health Center - 455 Greenwave Blvd Dawson, GA 39842-2908
- Turner Elementary School-Based Health Center - 2001 Leonard Ave Albany, GA 31705-2341
- West Albany Dental Center - 1412 W Oakridge Dr Albany, GA 31707-5307

● **CARECONNECT HEALTH, INC.**

- Americus OBGYN - 603 E Lamar St Americus, GA 31709-3737
- Americus Urgent Care - 618 E Lamar St Americus, GA 31709-3738
- CareConnect Convenient Care - 125 Mcdonald Ave Cuthbert, GA 39840-5829
- CareConnect Convenient Care - 209 N Camellia Blvd Fort Valley, GA 31030-3368
- CareConnect Convenient Care - 41 E Oglethorpe St Ellaville, GA 31806-3526
- CareConnect Family Dentistry - 101 Mayo St Americus, GA 31709-3695
- CareConnect Family Practice - 205 Rees St Americus, GA 31709-3756
- CareConnect Family Practice - 23 Old School Rd Georgetown, GA 39854-4627
- CareConnect Family Practice - 254 Wright Ave Roberta, GA 31078-4945
- CareConnect Family Practice - 298 US Highway 520 Cusseta, GA 31805-3602
- CareConnect Family Practice - 300 Medical Ct Oglethorpe, GA 31068-2000
- CareConnect Family Practice - 712 N 7th St Cordele, GA 31015-3271
- CareConnect Family Practice - 80 W Main St Butler, GA 31006-5156
- CareConnect Family Practice and Pediatrics - 510 Alston St Ste A Richland, GA 31825-6012
- CareConnect Infectious Disease Clinic - 110 E 13th Ave Cordele, GA 31015-4245



67

NUMBER OF DELIVERY SITES IN CONGRESSIONAL DISTRICT

(main organization in bold)

● **CARECONNECT HEALTH, INC., cont.**

CareConnect OBGYN - 412 E 4th Ave Cordele, GA 31015-3619
CareConnect Pediatrics - 506 Spaulding Rd Ste B Montezuma, GA 31063-1817
CareConnect Pediatrics - 609 E Lamar St Americus, GA 31709-3737
CareConnect School Clinic - 140 Merrell St Cusseta, GA 31805-3022
CareConnect School Clinic - 218 E Main St Butler, GA 31006-5305
CareConnect School Clinic - 360 Ga Highway 26 Cusseta, GA 31805-3100
CareConnect School Clinic - 56 Mcdowell St Butler, GA 31006-5337
CareConnect Urgent Care - 602 E 16th Ave Ste B Cordele, GA 31015-1782
New Hope Clinic - 215 E 13th Ave Cordele, GA 31015-4249
Pediatric Urgent Care - 1007 E 16th Ave Ste A Cordele, GA 31015-4553

● **COMMUNITY HEALTH CARE SYSTEMS INC**

Community Health Care Systems-Bibb - 250 Martin Luther King Jr Blvd Ste 200 Macon, GA 31201-3490

● **COMMUNITY HEALTH, GEORGIA DEPT OF**

Decatur County Board of Health, Bainbridge Farmworker Clinic - 1626 E Shotwell St Bainbridge, GA 39819-4348
Decatur County Board of Health, Decatur Clinic - 920 S West St Bainbridge, GA 39819-4581
Phoebe Sumter Medical Center Mobile Medical Unit - 339 S Broad St Ellaville, GA 31806-3304
Phoebe Sumter Primary Care Clinic - Ellaville - 339 S Broad St Ellaville, GA 31806-3304

● **FIRST CHOICE PRIMARY CARE, INC.**

Daybreak Center Suite A - 174 Walnut St Macon, GA 31201-3440
FCPC Bibb County Health Dept - 171 Emery Hwy Macon, GA 31217-3666
First Choice Navicent Transitional Care - 777 Hemlock St Macon, GA 31201-2102
First Choice Primary Care - South Macon Family Physicians - 3741 Houston Ave Macon, GA 31206-2415
First Choice Primary Care Inc. - 770 Walnut St Macon, GA 31201-2635
First Choice Primary Care Poplar St - 400 Poplar St Macon, GA 31201-3336
Ingram Pye Health Center - 855 Anthony Rd Macon, GA 31204-6266

● **PRIMARY CARE OF SOUTHWEST GEORGIA, INC.**

PCSG - Bainbridge - 509 Wheat Ave Bainbridge, GA 39819-4321
Primary Care Of Sw Georgia, Inc. - 360 College St Blakely, GA 39823-2554
The Grist-Addison Administration Building of Primary Care of Southwest Georgia - 338 College St Blakely, GA 39823-2554

● **VALLEY HEALTHCARE SYSTEM, INC.**

Dorothy Height Elementary School SBHC - 1458 Benning Dr Columbus, GA 31903-2200
Fort Benning Road Health Center - 1600 Fort Benning Rd Columbus, GA 31903-2834
Talbot County Medical/Dental Center - 341 N Washington Ave Talbotton, GA 31827-2037