



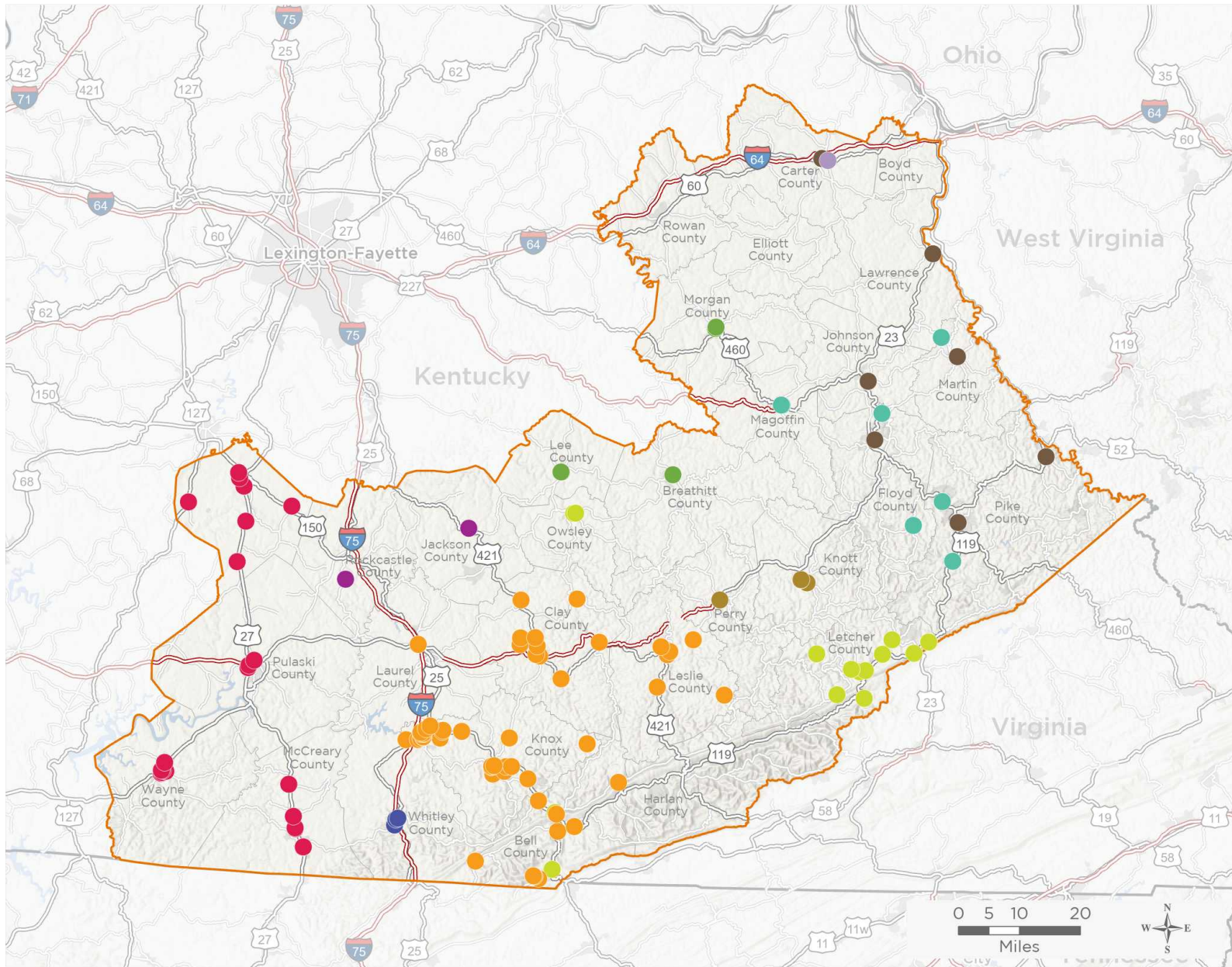
NATIONAL ASSOCIATION OF
Community Health Centers

Representative Hal Rogers

117th United States Congress

Kentucky's 5TH Congressional District

The 10 federally-funded health center organizations with a presence in Kentucky's 5th Congressional District leverage **\$38,489,142** in federal investments to serve **331,580** patients.



126

NUMBER OF DELIVERY SITES IN CONGRESSIONAL DISTRICT

- Federally-funded site (each color represents one organization)
- 117th Congressional District Boundaries
- Major Highways
- Highways
- Major Roads
- County Boundaries
- City or Town

Notes | Delivery sites represent locations of organizations funded by the federal Health Center Program. Some locations may overlap due to scale or may otherwise not be visible when mapped. Federal investments represent the total funding from the federal Health Center Program to grantees with a presence in the state in 2019.

Sources | Federally-Funded Delivery Site Locations: data.HRSA.gov, November 16, 2020.
Health Center Patients and Federal Funding | 2019 Uniform Data System, Bureau of Primary Health Care, HRSA.

© National Association of Community Health Centers, 2021. For more information, please contact federalaffairs@nachc.org.



126

NUMBER OF DELIVERY SITES IN CONGRESSIONAL DISTRICT

(main organization in bold)

BIG SANDY HEALTH CARE, INC.

- BSHC Mobile Dental Unit #1 - Highway 645 Inez, KY 41224
- Eula Hall Health Center - 7629 Ky Route 979 Grethel, KY 41631-6304
- Hope Family Health Services - 214 Beriah Blvd Salyersville, KY 41465-7509
- Hope Family Medical Center - 940 Parkway Dr Salyersville, KY 41465-9251
- Martin County Community Health Center - Highway 645 Inez, KY 41224
- Physicians For Women And Families - 23 Willow Dr Auxier, KY 41602-9259
- Pikeville Community Health Center - 50 Weddington Branch Rd Ste B Pikeville, KY 41501-3296
- Shelby Valley Clinic - 178 Douglas Pkwy Pikeville, KY 41501-6970
- Temporary Site- Hope Family Health Services - 194 Beriah Blvd Salyersville, KY 41465-7509

CUMBERLAND FAMILY MEDICAL CENTER, INC.

- Bell Healthy Kids Clinic - 278 Kenny Davis Blvd Monticello, KY 42633-9479
- Crab Orchard Healthy Kids Clinic - 137 Lancaster St Crab Orchard, KY 40419-9628
- Family Dental of Somerset - 501 College St Somerset, KY 42501-1352
- Ft. Logan Healthy Kids Clinic - 305 Danville Ave Stanford, KY 40484-1205
- Highland Healthy Kids Clinic - 75 Tick Ridge Rd Waynesburg, KY 40489-8202
- Hustonville Healthy Kids Clinic - 93 College St Hustonville, KY 40437-9505
- Lincoln County High Healthy Kids Clinic - 60 Education Way Stanford, KY 40484-8411
- Lincoln County Middle Healthy Kids Clinic - 285 Education Way Stanford, KY 40484-8411
- McCreary Central Healthy Kids Clinic - 400 Raider Way Stearns, KY 42647-6110
- McCreary County Middle Healthy Kids Clinic - 180 Raider Way Stearns, KY 42647-6110
- Monticello Healthy Kids Clinic - 160 Cave St Monticello, KY 42633-1412
- Pine Knot Intermediate Healthy Kids Clinic - 6519 S Highway 1651 Pine Knot, KY 42635-9162
- Pine Knot Primary Healthy Kids Clinic - 119 KY-2792 Pine Knot, KY 42635
- Promise Community Health Center - 341 Bogle St Ste A Somerset, KY 42503-2815
- Somerset Pediatric and Adolescent Associates - 350 Langdon St Somerset, KY 42503-2786
- Stanford Healthy Kids Clinic - 101 Old Fort Rd Stanford, KY 40484-8540
- Walker Healthy Kids Clinic - 1080 S Main St Monticello, KY 42633-2762
- Wayne County High Healthy Kids Clinic - 2 Kenny Davis Blvd Monticello, KY 42633-9479
- Wayne County Middle Healthy Kids Clinic - 95 Champion Dr Monticello, KY 42633-5364
- Waynesburg Healthy Kids Clinic - 345 Ky Highway 328 W Waynesburg, KY 40489-8205
- Whitley City Healthy Kids Clinic - 2819 N Highway 27 Whitley City, KY 42653-4045
- Whitley Family Medical Center - 19 Medical Loop # 3 Whitley City, KY 42653-4382
- Women's Care of Lake Cumberland - 333 Bogle St Somerset, KY 42503-2873
- Women's Care of Lake Cumberland - 39 Jim Hill Service Rd Monticello, KY 42633-7900

DAYSRING HEALTH, INC.

- Dayspring Dental - 640 W Highway 92 Williamsburg, KY 40769-1936
- Dayspring Williamsburg - 402 Cumberland Ave Williamsburg, KY 40769-1238
- Dayspring Williamsburg Independent School - 1000 Main St Williamsburg, KY 40769-1000



126

NUMBER OF DELIVERY SITES IN CONGRESSIONAL DISTRICT

(main organization in bold)

● **GRACE COMMUNITY HEALTH CENTER, INC.**

- Corbin Educational Center SBHC - 901 S Main St Corbin, KY 40701-1805
- GCHC- Appalachian Children's Home - 1909 Ky 3439 Barbourville, KY 40906-7201
- GCHC SBHC Clay Middle - 239 Richmond Rd Manchester, KY 40962-1208
- GCHC SBHC Dewitt Elem - 138 Ky 718 Flat Lick, KY 40935-6129
- GCHC SBHC Girdler Elementary - 5452 N Ky 11 Girdler, KY 40943-6447
- GCHC SBHC Goose Rock - 364 Highway 1524 Manchester, KY 40962-8936
- GCHC SBHC Lynn Camp Elementary - 366 N Ky 830 Corbin, KY 40701-6132
- Grace CHC Bishop Street - 121 Bishop St Corbin, KY 40701-1702
- Grace CHC Clay County High School - 415 Clay County High Rd Manchester, KY 40962-7010
- Grace CHC Falls Highway - 1419 Cumberland Falls Hwy Corbin, KY 40701-2722
- Grace CHC Hayes Lewis Elementary School Based Health - KY-699 Yeaddiss, KY 41777
- Grace CHC Mountain View Elementary School - 170 Bears Trl Hyden, KY 41749-8488
- Grace CHC Oneida Elementary - 435 Newfound Rd Oneida, KY 40972-6004
- Grace CHC Pineville - 313 S Cherry St Pineville, KY 40977-1724
- Grace CHC SBH Bell Central School - 9821 US Highway 25 E Pineville, KY 40977-8581
- Grace CHC SBH Bell County High School - 9824 US Highway 25 E Pineville, KY 40977-8581
- Grace CHC SBH Corbin Elementary - 710 W 8th St Corbin, KY 40701-2106
- Grace CHC SBH Corbin High School - 1901 Snyder St Corbin, KY 40701-2451
- Grace CHC SBH Corbin Intermediate - 404 17th St Corbin, KY 40701-1922
- Grace CHC SBH Corbin Preschool - 614 Master St Corbin, KY 40701-1058
- Grace CHC SBH Corbin Primary - 3551 5th Street Rd Corbin, KY 40701-9650
- Grace CHC SBH Frakes School - Henderson Settlement Loop Frakes, KY 40940
- Grace CHC SBH Lone Jack School - Creech Holw Rd Pineville, KY 40977
- Grace CHC SBH Manchester Elementary - 1908 N Highway 421 Manchester, KY 40962-7337
- Grace CHC SBH Page School - 239 Page School Rd Pineville, KY 40977-8775
- Grace CHC SBH Right Fork School - 5296 Highway 221 Stoney Fork, KY 40988-8930
- Grace CHC SBH Stinnett Elementary School - 12975 Highway 421 Hoskinston, KY 40844
- Grace CHC SBH W.B. Muncy Elementary - 142 Pirate Dr Wooton, KY 41776-8889
- Grace CHC SBH Yellow Creek School - 4840 W Cumberland Ave Middlesboro, KY 40965-9078
- Grace CHC School Based Health Big Creek - 523 N Highway 66 Oneida, KY 40972-6607
- Grace CHC School Based Health Paces Creek Elementary - 1983 S Highway 421 Manchester, KY 40962-7514
- Grace Community Health Center, Inc - 39 Cumberland Gap Plz Gray, KY 40734-4536
- Grace Community Health Center, Inc. - Hyden - 21154 Highway 421 Hyden, KY 41749-8553
- Grace Health Manchester - 85 Highway 80 Manchester, KY 40962-8801
- Grace Health Mountain View - 272 London Mountain View Dr London, KY 40741-6601
- Grace Health Pediatrics - 120 N Commonwealth Ave Ste 123andamp4 Corbin, KY 40701-6413
- Grace Health Women's Care - 1019 Cumberland Falls Hwy Ste D141 Corbin, KY 40701-2796
- Grace SBH Burning Springs Elementary - 9847 N Highway 421 Manchester, KY 40962-6647
- Grace SBH Corbin Middle School - 50 Ed Mcneel Dr Corbin, KY 40701-1873
- Grace SBHC Central Elem - 1000 Ky 3439 Barbourville, KY 40906-7200
- Grace SBHC Corbin School of Innovation - 200 W 8th St Corbin, KY 40701-1900
- Grace SBHC Flat Lick Elem - 100 Ky 3085 Flat Lick, KY 40935-6461



126

NUMBER OF DELIVERY SITES IN CONGRESSIONAL DISTRICT

(main organization in bold)

● **GRACE COMMUNITY HEALTH CENTER, INC., cont.**

- Grace SBHC GR Hampton Elem - 60 Ky 3441 Barbourville, KY 40906-8095
- Grace SBHC Hacker Elem - 84 Hooker Rd Manchester, KY 40962-8202
- Grace SBHC Jesse D. Lay Elem - 220 N Allison Ave Barbourville, KY 40906-1337
- Grace SBHC Knox Central High School - 100 Panther Way Barbourville, KY 40906-8038
- Grace SBHC Knox Co Middle - 311 N Main St Barbourville, KY 40906-1445
- Grace SBHC Leslie Co High School - 25 Eagle Ln Hyden, KY 41749-8626
- Grace SBHC Lynn Camp Middle/High School - 100 N Ky 830 Corbin, KY 40701-6132
- Grace SBHC Middlesboro Elementary School - 3400 Cumberland Ave Middlesboro, KY 40965-2610
- Grace SBHC Middlesboro High School - 4404 W Cumberland Ave Middlesboro, KY 40965-2626
- Grace SBHC Middlesboro Middle School - 4400 W Cumberland Ave Middlesboro, KY 40965-2626
- Knox County Area Technology Center - 210 Wall St Barbourville, KY 40906-1450

● **HEALTH HELP, INCORPORATED**

- White House Clinic - McKee - 1010 Main St S Mc Kee, KY 40447-7089
- White House Clinic - Mt. Vernon - 116 Progress Dr Mount Vernon, KY 40456-8590

● **JUNIPER HEALTH, INC.**

- Juniper Health Breathitt County - 1484 Lakeside Dr Jackson, KY 41339-6555
- Juniper Health Lee County Dental - 60 Center St Beattyville, KY 41311-9085
- Juniper Health Morgan County - 905 Main St West Liberty, KY 41472-1023
- Juniper Health Morgan County Dental - 672 Main St West Liberty, KY 41472-1018
- JUNIPER HEALTH, Inc. DBA Lee County Family Medical Clinic - 125 Main St Beattyville, KY 41311-7484

● **LEWIS COUNTY PRIMARY CARE CENTER, INC**

- PrimaryPlus - Grayson - 100 Bellefonte Dr Grayson, KY 41143-1820

● **MOUNTAIN COMPREHENSIVE CARE CENTER, INC.**

- HomePlace Clinic - Belfry - 26229 US Highway 119 N Belfry, KY 41514-7416
- HomePlace Clinic - Grayson - 300 W Main St Grayson, KY 41143-1274
- HomePlace Clinic - Inez - 428 E Main St Inez, KY 41224-8931
- HomePlace Clinic - Louisa - 130 Town Hill Rd Louisa, KY 41230-6389
- HomePlace Clinic - Paintsville - 1110 S Mayo Trl Ste A Paintsville, KY 41240-1273
- HomePlace Clinic - Paintsville - 838 S Mayo Trl Paintsville, KY 41240-1384
- HomePlace Clinic - Pikeville - 118 River Dr Pikeville, KY 41501-1597
- HomePlace Clinic - Prestonsburg - 104 S Front Ave Prestonsburg, KY 41653-1614

● **MOUNTAIN COMPREHENSIVE HEALTH CORPORATION**

- Arlie Boggs Elementary School Based Clinic - 1099 Highway 806 Eolia, KY 40826-6554
- Burdine Campus School Based Clinic - 11497 KY-805 Jenkins, KY 41537-7800
- Cowan Elementary School Based Clinic - 3125 Highway 931 S Whitesburg, KY 41858-8966
- Fleming Neon Middle School Based Clinic - 50 2nd St Neon, KY 41840-8994
- Jenkins Middle High School Based Clinic - 269 Highway 3086 Jenkins, KY 41537-9204



126

NUMBER OF DELIVERY SITES IN CONGRESSIONAL DISTRICT

(main organization in bold)

● **MOUNTAIN COMPREHENSIVE HEALTH CORPORATION, cont.**

- Letcher County Alternative Education School Based Clinic - 185 Circle Dr Ste A Whitesburg, KY 41858-7662
- Letcher County Central High School Based Clinic - 435 Cougar Dr Whitesburg, KY 41858-7009
- Letcher Elementary School Based Clinic - 160 Lhs Dr Letcher, KY 41832-8922
- Letcher Middle School Based Clinic - 162 Lhs Dr Letcher, KY 41832-8922
- Martha Jane Potter Elementary School Based Clinic - 55 Kona Dr Whitesburg, KY 41858-7854
- Middlesboro Campus Clinic - 1540 US Highway 25 E Middlesboro, KY 40965-1861
- Owsley County Elementary School Based Clinic - 372 KY-28 Booneville, KY 41314-7325
- Owsley County High School Based Clinic - 177 Shepherd Rd Ste A Booneville, KY 41314-7343
- Pineville Independent School Based Clinic - 401 W Virginia Ave Ste A Pineville, KY 40977-1321
- West Whitesburg Elementary School Based Clinic - 330 Parks St Whitesburg, KY 41858-7539
- Whitesburg Middle School Based Clinic - 366 Parks St Whitesburg, KY 41858-7539

● **UNIVERSITY OF KENTUCKY**

- Hindman Elementary School - 875 W Main St Hindman, KY 41822-8004
- June Buchanan Satellite Site - 59 Cowtown Rd Hindman, KY 41822-9120
- Knott County Central High School - 76 Patriot Ln Hindman, KY 41822-9085
- Mobile 2 - 750 Morton Blvd Hazard, KY 41701-9469
- Ronald McDonald Care Mobile - 750 Morton Blvd Hazard, KY 41701-9469