



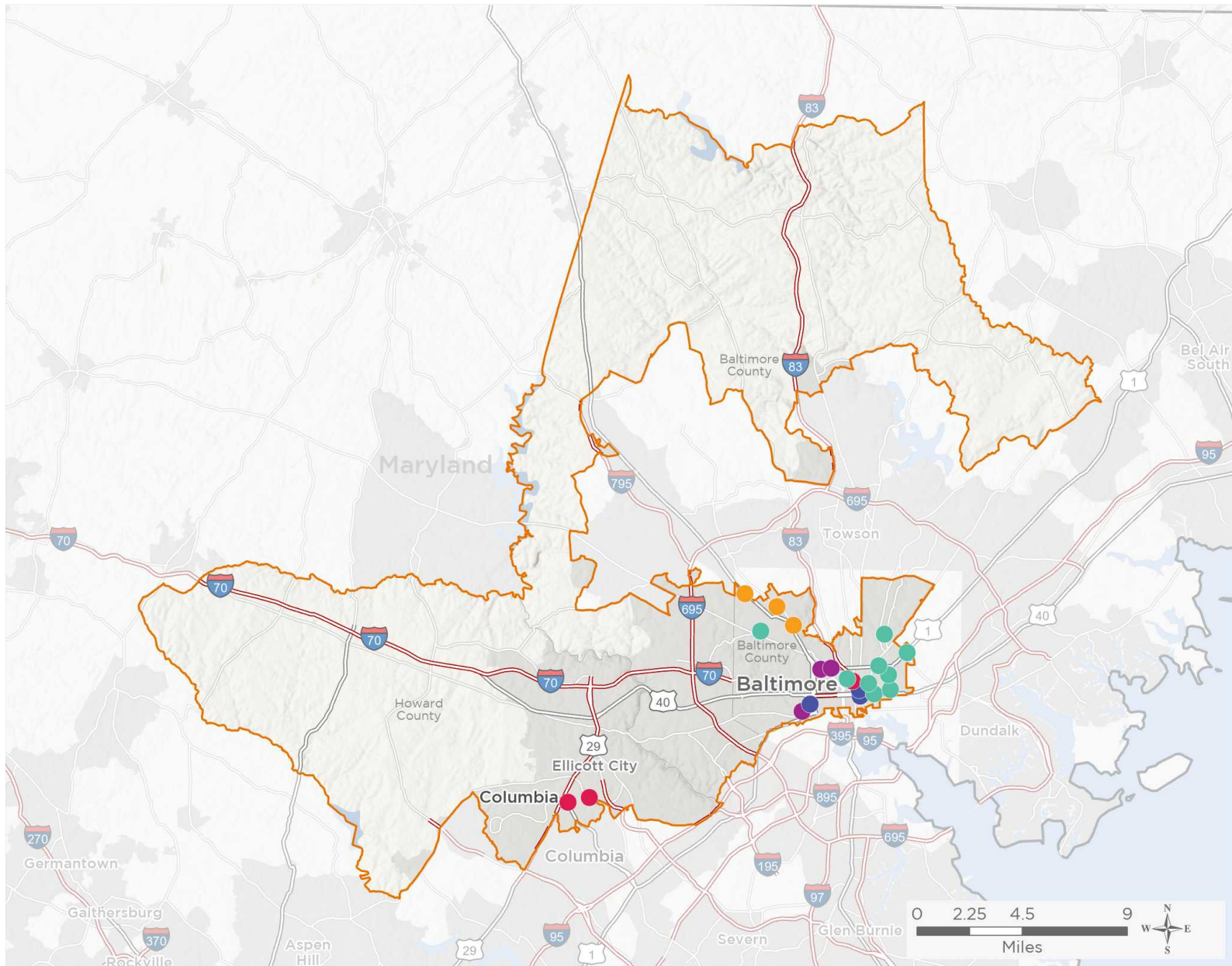
NATIONAL ASSOCIATION OF
Community Health Centers

Representative Kweisi Mfume

117th United States Congress

Maryland's 7TH Congressional District

The 5 federally-funded health center organizations with a presence in Maryland's 7th Congressional District leverage **\$24,766,453** in federal investments to serve **146,148** patients.



21

NUMBER OF DELIVERY SITES IN CONGRESSIONAL DISTRICT

- Federally-funded site (each color represents one organization)
- 117th Congressional District Boundaries
- Major Highways
- Highways
- Major Roads
- County Boundaries
- City or Town

Notes | Delivery sites represent locations of organizations funded by the federal Health Center Program. Some locations may overlap due to scale or may otherwise not be visible when mapped. Federal investments represent the total funding from the federal Health Center Program to grantees with a presence in the state in 2019.

Sources | Federally-Funded Delivery Site Locations: data.HRSA.gov, November 16, 2020.
Health Center Patients and Federal Funding | 2019 Uniform Data System, Bureau of Primary Health Care, HRSA.

© National Association of Community Health Centers, 2021. For more information, please contact federalaffairs@nachc.org.



21

NUMBER OF DELIVERY SITES IN CONGRESSIONAL DISTRICT

(main organization in bold)

BALTIMORE MEDICAL SYSTEM, INC.

AbsoluteCare Inc. - 1040 Park Ave Ste 200 Baltimore, MD 21201-5634
Belair Edison Family Health Ctr - 3120 Erdman Ave Baltimore, MD 21213-1720
Collington Square K-8 School - 1409 N Collington Ave Baltimore, MD 21213-3418
East Baltimore Medical Center - 1000 E Eager St Baltimore, MD 21202-5533
Forest Park High School - 3701 Eldorado Ave Baltimore, MD 21207-7658
Harford Heights Schools - 1919 N Broadway Baltimore, MD 21213-1432
Mergenthaler Vocational-Technical High School (Mervo) - 3500 Hillen Rd Baltimore, MD 21218-2227
Paul Laurence Dunbar High School - 1400 Orleans St Baltimore, MD 21231-1021
Tench Tilghman K-8 School - 600 N Patterson Park Ave Baltimore, MD 21205-2447

CHASE BREXTON HEALTH SERVICES, INC

Chase Brexton Health Services - 5500 Knoll North Dr Ste 370 Columbia, MD 21045-2393
Chase Brexton Health Services, Inc. - 1111 N Charles St Baltimore, MD 21201-5505
Way Station, Inc. - 9030 State Route 108 Ste A Columbia, MD 21045-1990

HEALTH CARE FOR THE HOMELESS, INC.

Convalescent Care Program - 620 Fallsway Baltimore, MD 21202-4117
HCH Mobile Van - 421 Fallsway Baltimore, MD 21202-4800
Health Care for the Homeless, West Baltimore - 2000 W Baltimore St Baltimore, MD 21223-1558

PARK WEST HEALTH SYSTEMS INCORPORATED

Park West Medical Center - Belvedere - 3319 W Belvedere Ave Baltimore, MD 21215-5143
Park West Medical Center - Plaza Site - 4120 Patterson Ave Baltimore, MD 21215-2254
Park West Men & Family Hlth Ctr - 4151 Park Heights Ave Baltimore, MD 21215-6730

TOTAL HEALTH CARE, INC.

Men's Health Center - 1515 W North Ave Baltimore, MD 21217-1735
Mt. Royal Health Center - 922 W North Ave Baltimore, MD 21217-3940
Westside Health Center - 2449 Frederick Ave Baltimore, MD 21223-2856