



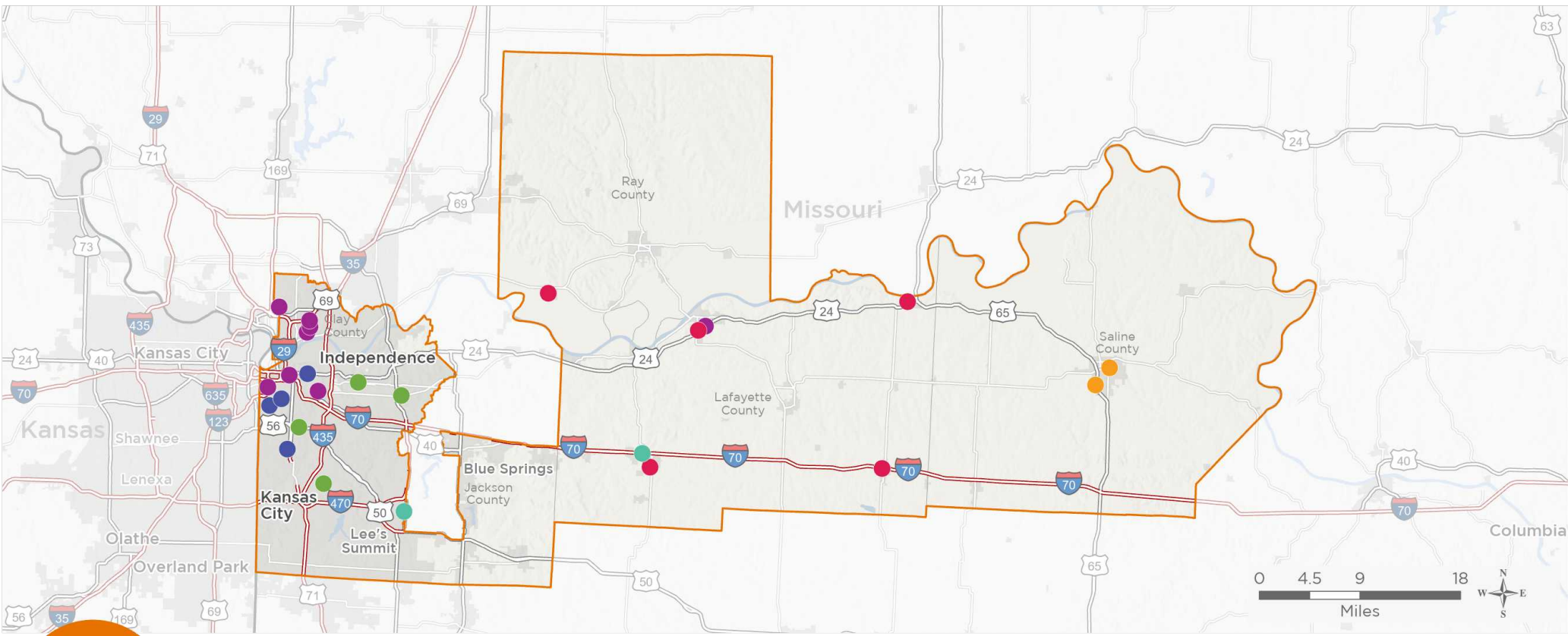
NATIONAL ASSOCIATION OF
Community Health Centers

Representative Emanuel Cleaver

117th United States Congress



Missouri's 5TH Congressional District






The 6 federally-funded health center organizations with a presence in Missouri's 5th Congressional District leverage **\$29,300,749** in federal investments to serve **148,487** patients.



30

**NUMBER OF DELIVERY SITES IN
CONGRESSIONAL DISTRICT**

-  Federally-funded site
(each color represents one organization)
-  117th Congressional District Boundaries

-  Major Highways
-  Highways
-  Major Roads
-  County Boundaries
-  City or Town

Notes | Delivery sites represent locations of organizations funded by the federal Health Center Program. Some locations may overlap due to scale or may otherwise not be visible when mapped. Federal investments represent the total funding from the federal Health Center Program to grantees with a presence in the state in 2019.

Sources | Federally-Funded Delivery Site Locations: data.HRSA.gov, November 16, 2020.
Health Center Patients and Federal Funding | 2019 Uniform Data System, Bureau of Primary Health Care, HRSA.

© National Association of Community Health Centers, 2021. For more information, please contact federalaffairs@nachc.org.

30

NUMBER OF DELIVERY SITES IN CONGRESSIONAL DISTRICT

(main organization in bold)

● **COMPASS HEALTH, INC.**

Compass Health - Odessa - 1278 W US Highway 40 Odessa, MO 64076-9612
Compass Health, Inc. - 901 NE Independence Ave Lees Summit, MO 64086-5544

● **HEALTH CARE COALITION OF LAFAYETTE COUNTY**

Live Well Community Health Center - Concordia - 206 N Bismark St Ste A Concordia, MO 64020-8101
Live Well Community Health Center - Mobile Services - 206 N Bismark St Concordia, MO 64020-8180
Live Well Community Health Center - Waverly - 608 Missouri St Waverly, MO 64096-8241
Live Well Community Health Center Lexington - 811 S Business Highway 13 Ste A Lexington, MO 64067-1572
Live Well Community Health Center- Odessa - 607 S 3rd St Odessa, MO 64076-1417
Live Well Community Health Center- Orrick - 100 Kirkham St Orrick, MO 64077-8240

● **KANSAS CITY CARE CLINIC**

Kansas City CARE Clinic - 1106 E 30th St Ste B Kansas City, MO 64109-1507
Kansas City CARE Clinic - 2340 E Meyer Blvd Ste 200 Kansas City, MO 64132-1121
Kansas City CARE Clinic - 3515 Broadway Blvd Kansas City, MO 64111-2501
Kansas City CARE Clinic - 4601 Independence Ave Kansas City, MO 64124-2927

● **REGIONAL HEALTH CARE CLINIC, INC.**

Katy Trail Community Health Marshall school based - 313 E Eastwood St Marshall, MO 65340-1413
Katy Trail Community Health-Marshall - 1825 Atchison Ave Marshall, MO 65340-9752

● **SAMUEL U RODGERS HEALTH CENTER, INC.**

Samuel U. Rodgers Community Health Center - Mobile - 825 Euclid Ave Kansas City, MO 64124-2323
Samuel U. Rodgers Health Center Cabot Westside - 2121 Summit St Kansas City, MO 64108-2126
Samuel U. Rodgers Health Center Chouteau Elementary - 3701 N Jackson Ave Kansas City, MO 64117-2645
Samuel U. Rodgers Health Center Downtown Campus - 825 Euclid Ave Kansas City, MO 64124-2323
Samuel U. Rodgers Health Center Eastgate Middle School - 4700 NE Parvin Rd Kansas City, MO 64117-2047

30

NUMBER OF DELIVERY SITES IN CONGRESSIONAL DISTRICT

(main organization in bold)

● **SAMUEL U RODGERS HEALTH CENTER, INC., cont.**

Samuel U. Rodgers Health Center J.A. Rogers Family Dental - 6400 E 23rd St Kansas City, MO 64129-1103

Samuel U. Rodgers Health Center Lafayette Family Medicine, Dental & WIC Services - 811 S Business Highway 13 Ste A Lexington, MO 64067-1572

Samuel U. Rodgers Health Center Lexington High School - 2309 Aull Ln Lexington, MO 64067-1523

Samuel U. Rodgers Health Center Northland Family Practice - 5330 N Oak Trfy Ste 203 Kansas City, MO 64118-4600

Samuel U. Rodgers Health Center Winnwood Elementary - 4531 NE 44th Ter Kansas City, MO 64117-1881

● **SWOPE HEALTH SERVICES**

Mobile Dental Unit - 3801 Blue Pkwy Kansas City, MO 64130-2807

Mobile Medical Clinic - 3801 Blue Pkwy Kansas City, MO 64130-2807

Swope Health East - 17844 E 23rd St S Independence, MO 64057-1840

Swope Health Independence - 11320 E Truman Rd Independence, MO 64050-2564

Swope Health Services - Hickman Mills - 8800 Blue Ridge Blvd Ste 208 Kansas City, MO 64138-4061

Swope Health Services Central - 3801 Blue Pkwy Kansas City, MO 64130-2807