



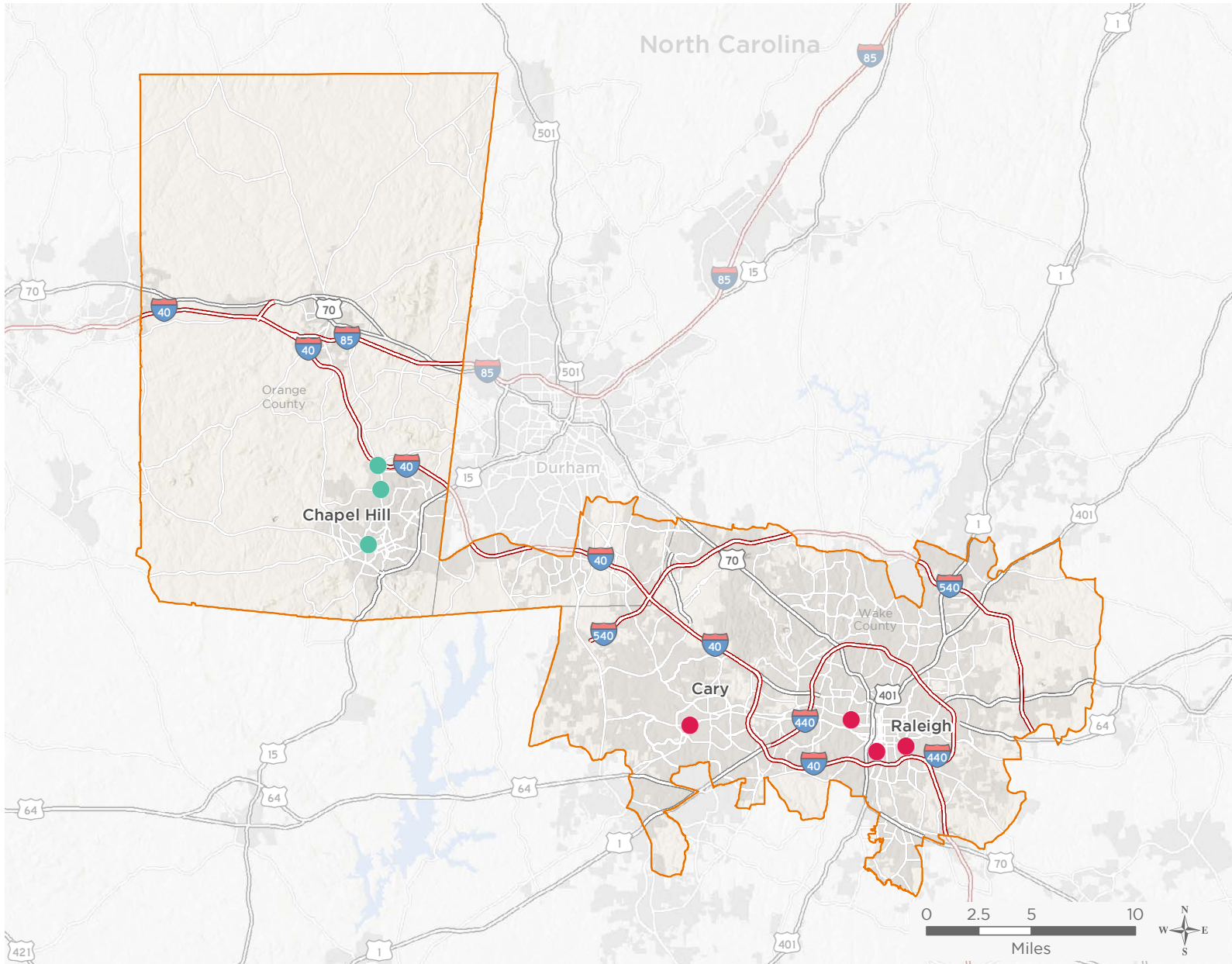
NATIONAL ASSOCIATION OF  
Community Health Centers

# Representative David Price

116th United States Congress

North Carolina's 4<sup>TH</sup> Congressional District

The 2 federally-funded health center organizations with a presence in North Carolina's 4th Congressional District leverage **\$12,351,552** in federal investments to serve **61,302** patients.



**7**

## NUMBER OF DELIVERY SITES IN CONGRESSIONAL DISTRICT

- Federally-funded site (each color represents one organization)
- 116th Congressional District Boundaries
- Major Highways
- Highways
- Major Roads
- County Boundaries
- City or Town

Notes | Delivery sites represent locations of organizations funded by the federal Health Center Program. Some locations may overlap due to scale or may otherwise not be visible when mapped. Federal investments represent the total funding from the federal Health Center Program to grantees with a presence in the state in 2017.

Sources | Federally-Funded Delivery Site Locations: data.HRSA.gov, December 3, 2018.  
Health Center Patients and Federal Funding | 2017 Uniform Data System, Bureau of Primary Health Care, HRSA.

© National Association of Community Health Centers, 2019. For more information, please contact [federalaffairs@nachc.org](mailto:federalaffairs@nachc.org).



7

**NUMBER OF DELIVERY SITES IN  
CONGRESSIONAL DISTRICT**

(main organization in bold)

● **PIEDMONT HEALTH SERVICES, INC.**

Carrboro Community Health Center - 301 Lloyd St Carrboro, NC 27510-1823

Chapel Hill Community Health Center - 1828 Martin Luther King Jr Blvd Chapel Hill, NC 27514-7415

IFC Community Health Center - 1315 Martin Luther King Jr Blvd Chapel Hill, NC 27514-6605

● **WAKE HEALTH SERVICES, INC. D/B/A ADVANCE COMMUNITY HEALTH**

CARY at DORCAS PLAZA - 173 High House Rd Cary, NC 27511-6715

Horizon at South Wilmington - 1420 S Wilmington St Raleigh, NC 27603-2526

Horizon at Women's Center - 112 Cox Ave Raleigh, NC 27605-1817

Southeast Raleigh - South - 1011 Rock Quarry Rd Raleigh, NC 27610-3825