



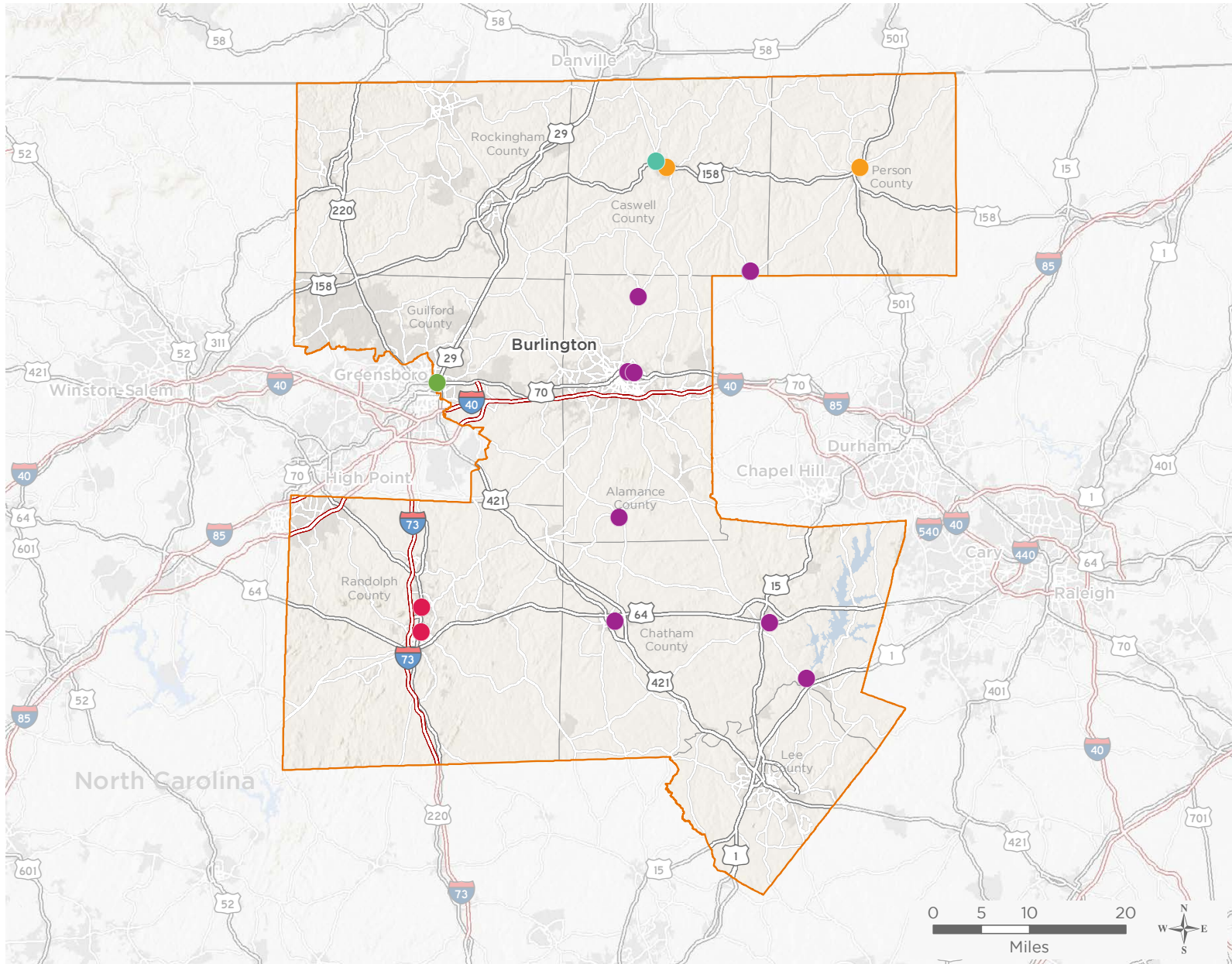
NATIONAL ASSOCIATION OF  
Community Health Centers

# Representative Mark Walker

## 116th United States Congress

### North Carolina's 6<sup>TH</sup> Congressional District

The 6 federally-funded health center organizations with a presence in North Carolina's 6th Congressional District leverage **\$17,371,095** in federal investments to serve **82,739** patients.



**16**

**NUMBER OF DELIVERY SITES IN CONGRESSIONAL DISTRICT**

- Federally-funded site (each color represents one organization)
- 116th Congressional District Boundaries
- Major Highways
- Highways
- Major Roads
- County Boundaries
- City or Town

Notes | Delivery sites represent locations of organizations funded by the federal Health Center Program. Some locations may overlap due to scale or may otherwise not be visible when mapped. Federal investments represent the total funding from the federal Health Center Program to grantees with a presence in the state in 2017.

Sources | Federally-Funded Delivery Site Locations: data.HRSA.gov, December 3, 2018.  
Health Center Patients and Federal Funding | 2017 Uniform Data System, Bureau of Primary Health Care, HRSA.

© National Association of Community Health Centers, 2019. For more information, please contact [federalaffairs@nachc.org](mailto:federalaffairs@nachc.org).



16

### NUMBER OF DELIVERY SITES IN CONGRESSIONAL DISTRICT

(main organization in bold)

#### **CASWELL FAMILY MEDICAL CENTER**

Caswell Family Medical Center - 439 US Highway 158 W Yanceyville, NC 27379-8304  
CFMC Urgent Care - 439 US Highway 158 W Ste B Yanceyville, NC 27379-8304

#### **MEDICAL RESOURCE CENTER FOR RANDOLPH COUNTY, INC**

Merce Dental Center - 308 Brewer St Asheboro, NC 27203-4896  
Merce Medical Resource Center - 1831 N Fayetteville St Asheboro, NC 27203-3273

#### **NC DEPARTMENT OF HEALTH AND HUMAN SERVICES**

Piedmont Health Services - 140 Main St Prospect Hill, NC 27314-9436

#### **PERSON FAMILY MEDICAL CENTER, INC.**

Person Family Dental Center Caswell Site - 1076 Nc Highway 86 N Yanceyville, NC 27379-8645  
Person Family Medical Center, Inc. - 702 N Main St Roxboro, NC 27573-4755

#### **PIEDMONT HEALTH SERVICES, INC.**

Charles Drew Community Health Center - 221 N Graham Hopedale Rd Burlington, NC 27217-2971  
Moncure Community Health Center - 7228 Moncure Pittsboro Rd Moncure, NC 27559-9595  
Piedmont Health SeniorCare Burlington Community Health Center - 1214 Vaughn Rd Burlington, NC 27217-2863  
Piedmont Health SeniorCare Pittsboro - 163 Chatham Business Dr Pittsboro, NC 27312-9726  
Prospect Hill Community Health Center - 322 Main St Prospect Hill, NC 27314-9438  
Scott Community Health Center - 5270 Union Ridge Rd Burlington, NC 27217-7594  
Siler City Community Health Center - 224 S 10th Ave Siler City, NC 27344-2779  
Sylvan Community Health Center - 7718 Sylvan Rd Snow Camp, NC 27349-9504

#### **TRIAD ADULT AND PEDIATRIC MEDICINE, INC.**

TAPM Pediatrics at Wendover - 1046 E Wendover Ave Greensboro, NC 27405-6712