



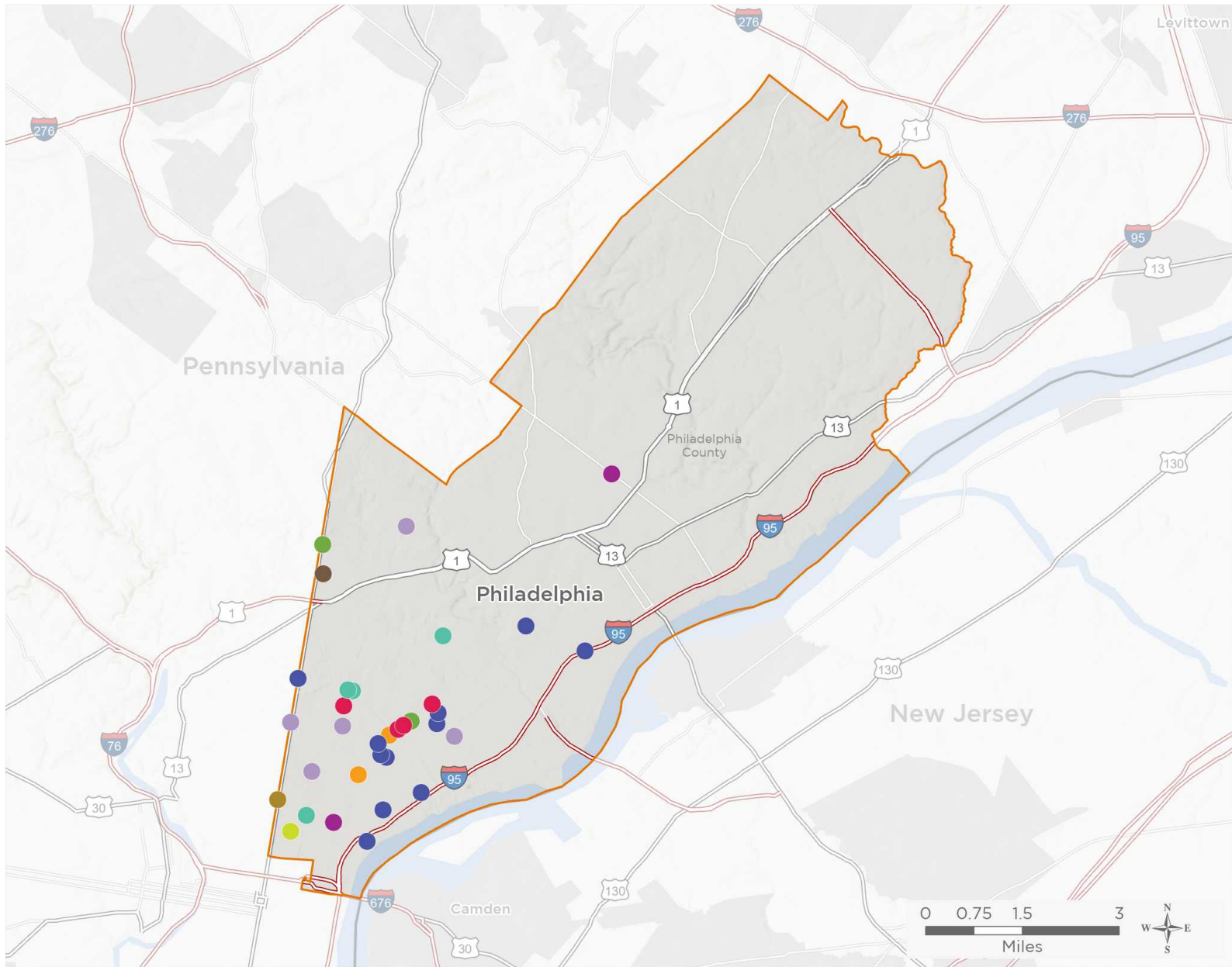
NATIONAL ASSOCIATION OF
Community Health Centers

Representative Brenden Boyle

117th United States Congress

Pennsylvania's **2ND** Congressional District

The 10 federally-funded health center organizations with a presence in Pennsylvania's 2nd Congressional District leverage **\$36,491,881** in federal investments to serve **265,395** patients.



34

NUMBER OF DELIVERY SITES IN CONGRESSIONAL DISTRICT

- Federally-funded site (each color represents one organization)
- 117th Congressional District Boundaries
- Major Highways
- Highways
- Major Roads
- County Boundaries
- City or Town

Notes | Delivery sites represent locations of organizations funded by the federal Health Center Program. Some locations may overlap due to scale or may otherwise not be visible when mapped. Federal investments represent the total funding from the federal Health Center Program to grantees with a presence in the state in 2019.

Sources | Federally-Funded Delivery Site Locations: data.HRSA.gov, November 16, 2020. Health Center Patients and Federal Funding | 2019 Uniform Data System, Bureau of Primary Health Care, HRSA.



34

NUMBER OF DELIVERY SITES IN CONGRESSIONAL DISTRICT

(main organization in bold)

DELAWARE VALLEY COMMUNITY HEALTH, INC.

Fairmount Primary Care Center at Girard Medical Center - 801 W Girard Ave Philadelphia, PA 19122-4212
Maria De Los Santos Health Ctr - 401 W Allegheny Ave Philadelphia, PA 19133-3644
Maria de los Santos Women's Health Center - 400 W Allegheny Ave Philadelphia, PA 19133-3614
Parkview Ob/Gyn Health Center - 841 E Hunting Park Ave Philadelphia, PA 19124-4800

ESPERANZA HEALTH CENTER, INC.

Esperanza Health Center - 2940 N 5th St Philadelphia, PA 19133-2801
Esperanza Health Center K&A - 861 E Allegheny Ave Philadelphia, PA 19134-2401
Temporary Site-Kensington Covid Testing/Treatment Center - 2751 Kensington Ave Philadelphia, PA 19134-3460
Temporary Site-Kensington Emergency Drop-in Center - 2821 Kensington Ave Philadelphia, PA 19134-3014

GREATER PHILADELPHIA HEALTH ACTION, INCORPORATED

Frankford Avenue Health Center - 4510 Frankford Ave Philadelphia, PA 19124-3602
GPHA - Delaware Avenue Health Center - 1080 N Delaware Ave Philadelphia, PA 19125-4330
GPHA - Franklin Towne Charter Health Suite - 5301 Tacony St Philadelphia, PA 19137-2307
GPHA - Jules E. Mastbaum Health Suite - 3116 Frankford Ave Philadelphia, PA 19134-3827
GPHA - Kensington Health Sciences Health Suite - 2463 Emerald St Philadelphia, PA 19125-1236
GPHA - Kensington Health Suite - 2501 Coral St Philadelphia, PA 19125
GPHA - Liguori Academy - Fortis Health Suite - 1952 E Allegheny Ave Philadelphia, PA 19134-3122
GPHA - Maritime Academy Charter Health Suite - 2700 E Huntingdon St Philadelphia, PA 19125-4038
GPHA - Penn Treaty Health Suite - 600 E Thompson St Philadelphia, PA 19125-3427
GPHA - Sankofa Freedom Academy Charter Health Suite - 2501 Kensington Ave Philadelphia, PA 19125-1321
GPHA, INC. Medical Suite at Temple's Dental School - 3223 N Broad St Philadelphia, PA 19140-5007

PHILADELPHIA FIGHT

Temporary Site - Philadelphia FIGHT Pediatrics - 2011 N Mascher St Philadelphia, PA 19122-1713
Temporary Site- Kensington Testing Site - 2646 Kensington Ave Philadelphia, PA 19125-1122

PHILADELPHIA, CITY OF

Philadelphia District Health Center #10 - 2230 Cottman Ave Philadelphia, PA 19149-1230
Philadelphia District Health Center #6 - 321 W Girard Ave Philadelphia, PA 19123-1531
Temporary Site - Health Center 10 Annex - 2248 Cottman Ave Philadelphia, PA 19149-1230

PROJECT H.O.M.E.

Pathways to Housing - PA - 5201 Old York Rd Philadelphia, PA 19141-2985
Project HOME Primary Care @ Prevention Point - 2913 Kensington Ave Rm 4-5 Philadelphia, PA 19134-3016

PUBLIC HEALTH MANAGEMENT CORPORATION

Congreso Health Center - 412 W Lehigh Ave Philadelphia, PA 19133-3148
PHMC Health Connection - 1900 N 9th St Philadelphia, PA 19122-2024



34

NUMBER OF DELIVERY SITES IN CONGRESSIONAL DISTRICT

(main organization in bold)

● **PUBLIC HEALTH MANAGEMENT CORPORATION, cont.**

Rising Sun Health Center - 5675 N Front St Philadelphia, PA 19120-2719

Station House - 2601 N Broad St Philadelphia, PA 19132-4033

● **QUALITY COMMUNITY HEALTH CARE, INC.**

Cooke Family Health Center - 1300 W Loudon St Philadelphia, PA 19141-2603

● **RESOURCES FOR HUMAN DEVELOPMENT, INC.**

11Th Street Fam Hlth Svcs Drexel - 850 N 11th St Philadelphia, PA 19123-1957

● **SPECTRUM HEALTH SERVICES, INC.**

Broad Street Health Center - 1415 N Broad St Ste 224 Philadelphia, PA 19122-3325