



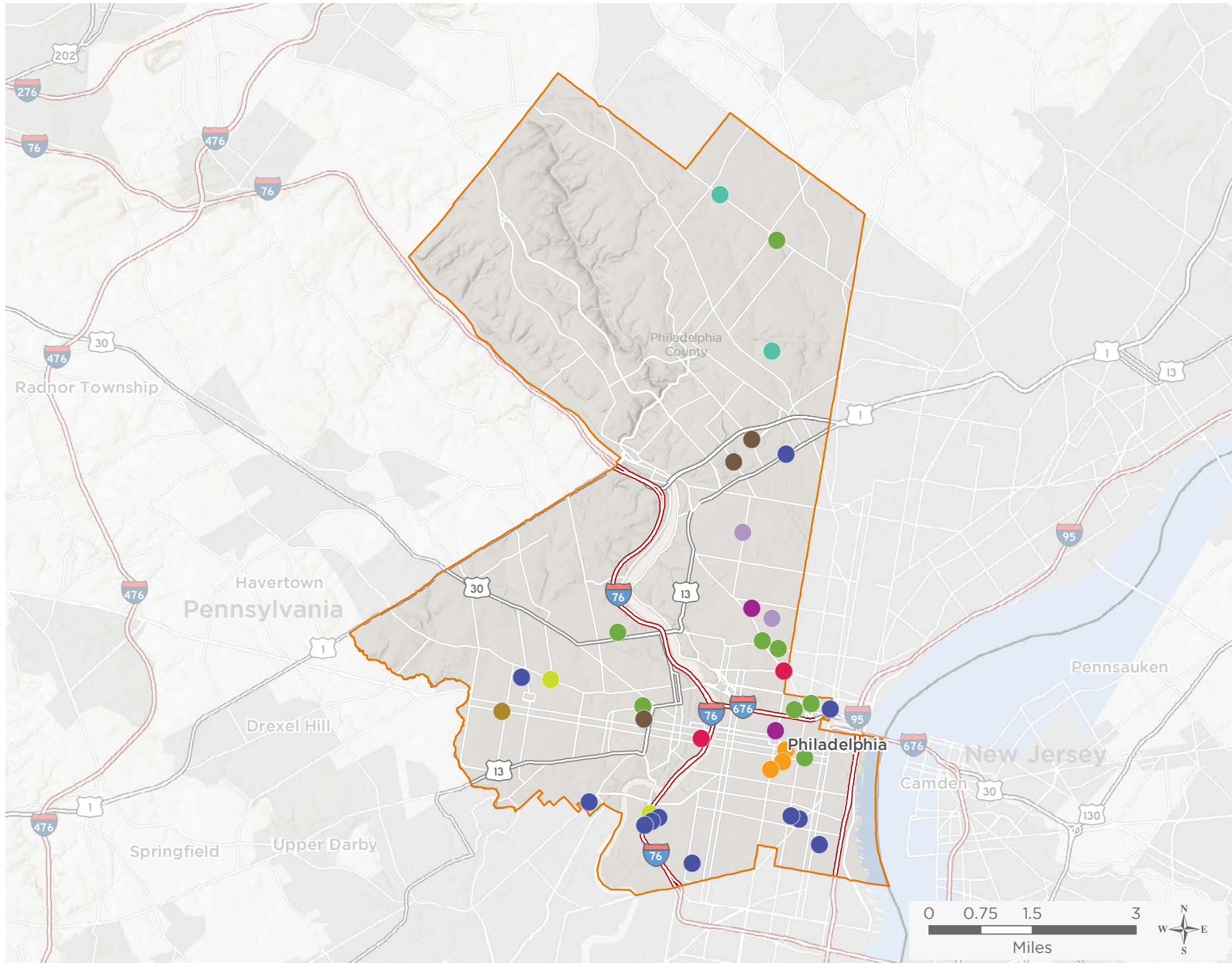
NATIONAL ASSOCIATION OF
Community Health Centers

Representative Dwight Evans

116th United States Congress

Pennsylvania's **3RD** Congressional District

The 10 federally-funded health center organizations with a presence in Pennsylvania's 3rd Congressional District leverage **\$36,996,396** in federal investments to serve **225,857** patients.



40

NUMBER OF DELIVERY SITES IN CONGRESSIONAL DISTRICT

- Federally-funded site (each color represents one organization)
- 116th Congressional District Boundaries
- Major Highways
- Highways
- Major Roads
- County Boundaries
- City or Town

Notes | Delivery sites represent locations of organizations funded by the federal Health Center Program. Some locations may overlap due to scale or may otherwise not be visible when mapped. Federal investments represent the total funding from the federal Health Center Program to grantees with a presence in the state in 2017.

Sources | Federally-Funded Delivery Site Locations: data.HRSA.gov, December 3, 2018.
Health Center Patients and Federal Funding | 2017 Uniform Data System, Bureau of Primary Health Care, HRSA.

40

NUMBER OF DELIVERY SITES IN CONGRESSIONAL DISTRICT

(main organization in bold)

● **COVENANT HOUSE, INC.**

Covenant House Health and Dental Center - 8127 Stenton Ave Philadelphia, PA 19150-3530

COVENANT HOUSE, Inc. - 251 E Brighthurst St Philadelphia, PA 19144-1719

Mt. Pleasant Medical Center - 8125 Stenton Ave Philadelphia, PA 19150-3530

● **DELAWARE VALLEY COMMUNITY HEALTH, INC**

Fairmount Primary Care Center - 1412 Fairmount Ave Philadelphia, PA 19130-2908

Fairmount Primary Care Center at Horizon House - 120 S 30th St Philadelphia, PA 19104-3403

● **GREATER PHILADELPHIA HEALTH ACTION, INC.**

AI-Assist Behavioral Health Care - 1401 S 4th St Philadelphia, PA 19147-5948

Carl Moore Health Center - 1401 S 31st St Philadelphia, PA 19146-3506

Chinatown Medical Services - 2 - 432 N 6th St Philadelphia, PA 19123-4004

Chinatown Medical Services - 930 Washington Ave Philadelphia, PA 19147-3840

GPHA - Audenried School-Based Health Suite - 3301 Tasker St Philadelphia, PA 19145-1021

GPHA - Vare School-Based Health Suite - 2100 S 24th St Philadelphia, PA 19145-3222

GPHA- Alcorn School Based Health Suite - 3200 Dickinson St Philadelphia, PA 19146-3316

GPHA-Daroff School-Based Health Suite - 5630 Vine St Philadelphia, PA 19139-1301

Hunting Park Health Center - 1999 W Hunting Park Ave Philadelphia, PA 19140-2828

Southeast Health Center - 800 Washington Ave Philadelphia, PA 19147-4717

Woodland Avenue Health Center - 5000 Woodland Ave Philadelphia, PA 19143-5137

● **PHILADELPHIA FIGHT**

Broad Street Ministry - 315 S Broad St Philadelphia, PA 19107-5213

Dental Clinic - 1207 Chestnut St Philadelphia, PA 19107-4131

Diana Baldwin Clinic - 1211 Chestnut St Ste 605 Philadelphia, PA 19107-4117

FIGHT Pediatric and Adolescent Medicine YHEP Clinic - 1207 Chestnut St Fl 5 Philadelphia, PA 19107-4131

John Bell Clinic - 1207 Chestnut St Philadelphia, PA 19107-4131

Philadelphia FIGHT Jonathan Lax Treatment Center - 1233 Locust St Philadelphia, PA 19107-5453

● **PROJECT H.O.M.E.**

Hub of Hope - 1401 Arch St Philadelphia, PA 19102

Stephen Klein Wellness Center - 2144 Cecil B Moore Ave Philadelphia, PA 19121-4014

● **PUBLIC HEALTH MANAGEMENT CORPORATION**

Calcutta House - 1601 W Girard Ave Philadelphia, PA 19130-1639

Interim House West - 4108 Parkside Ave Philadelphia, PA 19104-1020

Mary Howard Health Center - 125 S 9th St Philadelphia, PA 19107-5125

Our Brother's Place - 907 Hamilton St Philadelphia, PA 19123-3815

PEC Nursing Center - 325 N 39th St Philadelphia, PA 19104-4656

PHMC Care Clinic - 1200 Callowhill St Philadelphia, PA 19123-3658

Serenity Court - 1221 N 19th St Philadelphia, PA 19121-4901

Stenton Family Manor - 1300 E Tulpehocken St Philadelphia, PA 19138-1523



40

NUMBER OF DELIVERY SITES IN CONGRESSIONAL DISTRICT

(main organization in bold)

QUALITY COMMUNITY HEALTH CARE, INC.

Meade Family Health Center - N 18th St & W Oxford St Philadelphia, PA 19121

Quality Community Health Care, Inc. - 2501 W Lehigh Ave Philadelphia, PA 19132-3207

RESOURCES FOR HUMAN DEVELOPMENT, INC.

Abbottsford Falls Fp & Counseling - 4700 Wissahickon Ave Bldg D # 118 Philadelphia, PA 19144-4248

Family Practice & Counseling Network at ActionAIDS West - 3901 Market St Philadelphia, PA 19104-3133

Fast Family Care - 2800 Fox St Unit A Philadelphia, PA 19129-1840

SPECTRUM HEALTH SERVICES

Reed Street Health Center - 1325 S 33rd St Philadelphia, PA 19146-3303

Spectrum Community Health Center - 5201 Haverford Ave Philadelphia, PA 19139-1401

THE SAYRE HEALTH CENTER

The Sayre Health Center - 5800 Walnut St Ste 121 Philadelphia, PA 19139-3836