



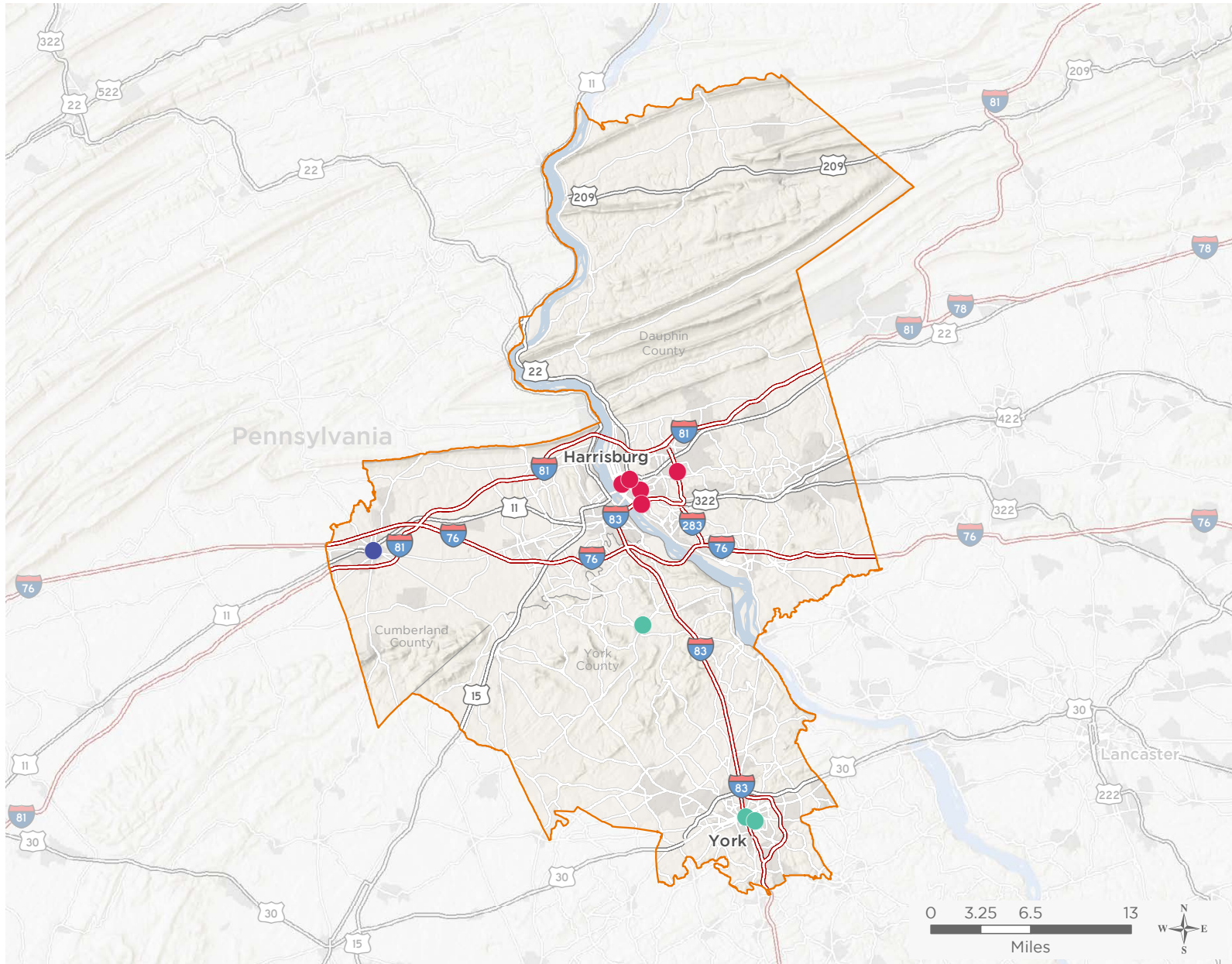
NATIONAL ASSOCIATION OF
Community Health Centers

Representative Scott Perry

116th United States Congress

Pennsylvania's **10TH** Congressional District

The 3 federally-funded health center organizations with a presence in Pennsylvania's 10th Congressional District leverage **\$6,772,249** in federal investments to serve **63,459** patients.



9

NUMBER OF DELIVERY SITES IN CONGRESSIONAL DISTRICT

- ● ● Federally-funded site (each color represents one organization)
- 116th Congressional District Boundaries
- Major Highways
- Highways
- Major Roads
- County Boundaries
- City or Town

Notes | Delivery sites represent locations of organizations funded by the federal Health Center Program. Some locations may overlap due to scale or may otherwise not be visible when mapped. Federal investments represent the total funding from the federal Health Center Program to grantees with a presence in the state in 2017.

Sources | Federally-Funded Delivery Site Locations: data.HRSA.gov, December 3, 2018.
Health Center Patients and Federal Funding | 2017 Uniform Data System, Bureau of Primary Health Care, HRSA.

© National Association of Community Health Centers, 2019. For more information, please contact federalaffairs@nachc.org.



9

**NUMBER OF DELIVERY SITES IN
CONGRESSIONAL DISTRICT**

(main organization in bold)

FAMILY FIRST HEALTH CORPORATION

Family First Health Corporation - 116 S George St York, PA 17401-1474

Hannah Penn Center - 415 E Boundary Ave York, PA 17403-2811

Lewisberry Center - 308 Market St Lewisberry, PA 17339-9257

HAMILTON HEALTH CENTER, INC.

HHC- South Allison Hill - 110 S 17th St Harrisburg, PA 17104-1123

HHC-Downey School - 1313 Monroe St Harrisburg, PA 17103-1139

HHC-Foose School - 1301 Sycamore St Harrisburg, PA 17104-3410

HHC-Senior High Rise - 1301 N 6th St Harrisburg, PA 17102-1249

Union Deposit Family Practice - 891 S Arlington Ave Harrisburg, PA 17109-5004

SADLER HEALTH CENTER CORPORATION

Sadler Health Center Corporation - 100 N Hanover St Carlisle, PA 17013-2421