



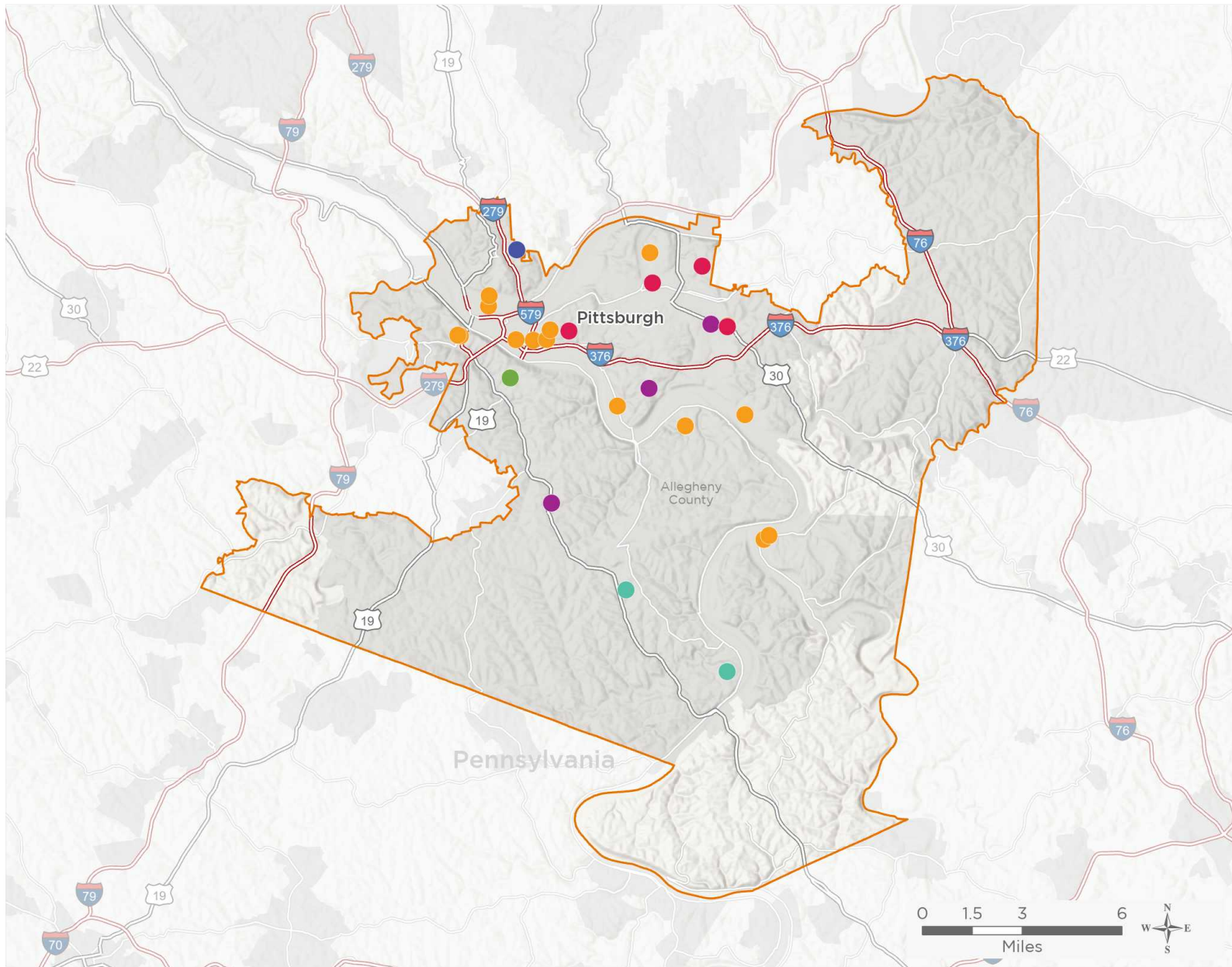
NATIONAL ASSOCIATION OF
Community Health Centers

Representative Mike Doyle

117th United States Congress

Pennsylvania's **18TH** Congressional District

The 6 federally-funded health center organizations with a presence in Pennsylvania's 18th Congressional District leverage **\$20,026,329** in federal investments to serve **59,896** patients.



26

NUMBER OF DELIVERY SITES IN CONGRESSIONAL DISTRICT

- Federally-funded site (each color represents one organization)
- 117th Congressional District Boundaries
- Major Highways
- Highways
- Major Roads
- County Boundaries
- City or Town

Notes | Delivery sites represent locations of organizations funded by the federal Health Center Program. Some locations may overlap due to scale or may otherwise not be visible when mapped. Federal investments represent the total funding from the federal Health Center Program to grantees with a presence in the state in 2019.

Sources | Federally-Funded Delivery Site Locations: data.HRSA.gov, November 16, 2020. Health Center Patients and Federal Funding | 2019 Uniform Data System, Bureau of Primary Health Care, HRSA.

© National Association of Community Health Centers, 2021. For more information, please contact federalaffairs@nachc.org.



26

NUMBER OF DELIVERY SITES IN CONGRESSIONAL DISTRICT

(main organization in bold)

CORNERSTONE CARE, INC.

Cornerstone Care Clairton Dental Office - 500 N Lewis Run Rd Ste 128 West Mifflin, PA 15122-3075

Cornerstone Care of Clairton - 559 Miller Ave Clairton, PA 15025-1746

EAST LIBERTY FAMILY HEALTH CARE CENTER, INC.

East Liberty Family Health Care Center- HD - 373 Burrows St Pittsburgh, PA 15213-2201

East Liberty Family Health Care Center- W - 807 Wallace Ave Wilkinsburg, PA 15221-2312

East Liberty Family Health Care Center-EL - 6023 Harvard St Pittsburgh, PA 15206-3053

East Liberty Family Health Care Center-LL - 7171 Churchland St Pittsburgh, PA 15206-1217

NORTH SIDE CHRISTIAN HEALTH CENTER

North Side Christian Health Center at Northview - 525 Mount Pleasant Rd Pittsburgh, PA 15214-2427

PRIMARY CARE HEALTH SERVICES, INC.

Beth Haven/Wellspring - 905 Watson St Pittsburgh, PA 15219-4709

Braddock Health Center - 404 Braddock Ave Braddock, PA 15104-1804

Community Human Services/Wood Street Commons - 301 3rd Ave Pittsburgh, PA 15222-1924

East End Community Health Ctr. - 1117 N Negley Ave Pittsburgh, PA 15206-1515

Family Links - 1601 5th Ave Pittsburgh, PA 15219-5537

Hazelwood Health Center - 4918 2nd Ave Pittsburgh, PA 15207-1623

Hill House Health Center - 1835 Centre Ave Pittsburgh, PA 15219-4305

McKeesport Downtown Housing - 523 Sinclair St McKeesport, PA 15132-3029

McKeesport Family Health Center - 627 Lysle Blvd McKeesport, PA 15132-2524

Pleasant Valley - 1601 Brighton Rd Pittsburgh, PA 15212-3838

Salvation Army Harbor Light - 865 W North Ave Pittsburgh, PA 15233-1616

Steel Valley Family Hlth Center - 1800 West St Homestead, PA 15120-2563

West End Dental Office - 441 S Main St Pittsburgh, PA 15220-5540

West End Health Center - 415 Neptune St Pittsburgh, PA 15220-5516

Wilkinsburg Family Health Center - 807 Wallace Ave Pittsburgh, PA 15221-2312

SQUIRREL HILL HEALTH CENTER

Mobile Medical Unit - 4516 Browns Hill Rd Pittsburgh, PA 15217-2917

Power - 907 West St Ste 2 Wilkinsburg, PA 15221-2841

SHHC Brentwood - 103 Towne Square Way Brentwood, PA 15227-3254

STO-ROX NEIGHBORHOOD HEALTH COUNCIL, INC.

Hilltop Community HealthCare Center - 151 Ruth St Pittsburgh, PA 15211-2384