



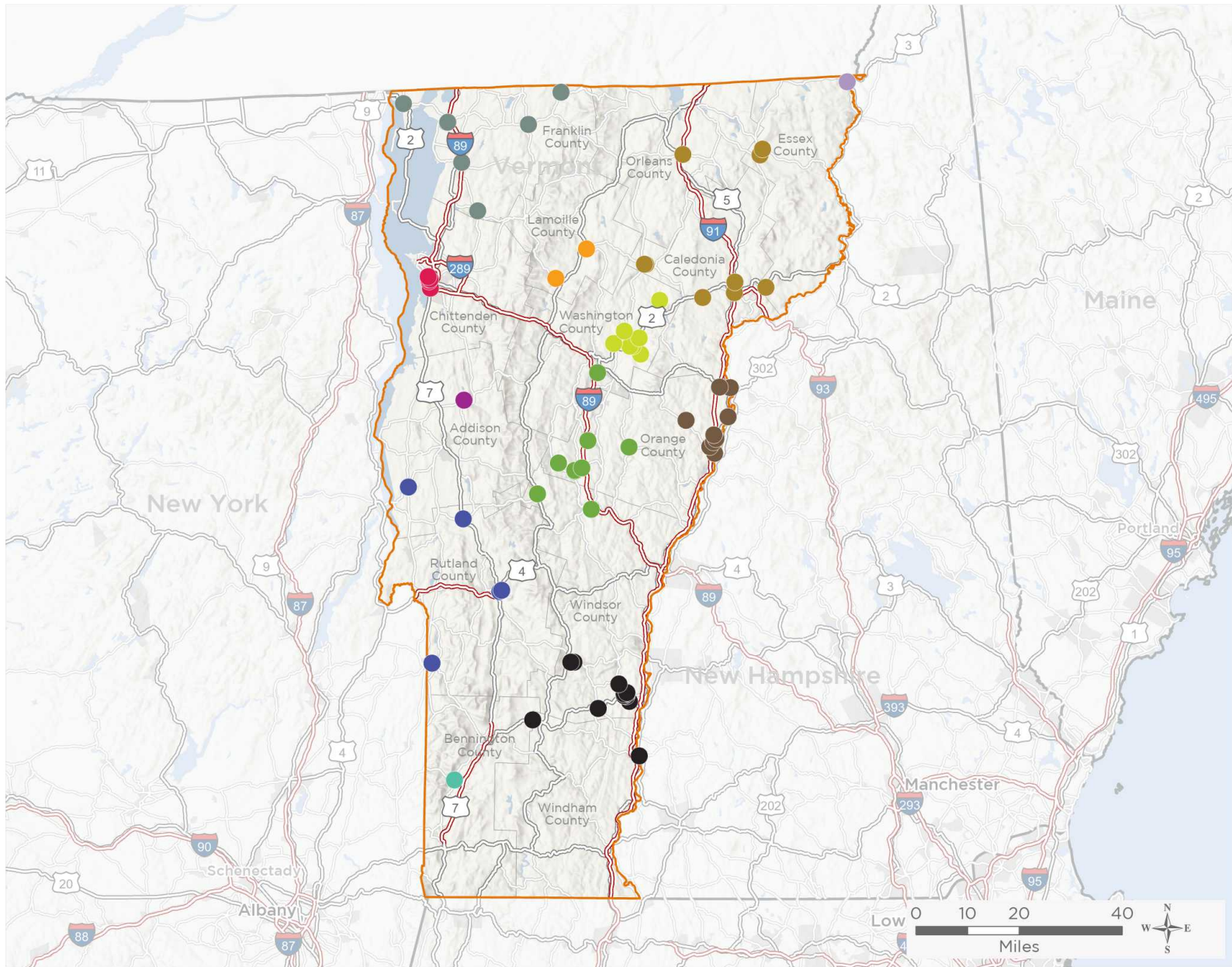
NATIONAL ASSOCIATION OF
Community Health Centers

Representative Peter Welch

117th United States Congress

Vermont's **AL** Congressional District

The 12 federally-funded health center organizations with a presence in Vermont's At-Large Congressional District leverage **\$26,293,829** in federal investments to serve **190,912** patients.



71

NUMBER OF DELIVERY SITES IN CONGRESSIONAL DISTRICT

- Federally-funded site (each color represents one organization)
- 117th Congressional District Boundaries
- Major Highways
- Highways
- Major Roads
- County Boundaries
- City or Town

Notes | Delivery sites represent locations of organizations funded by the federal Health Center Program. Some locations may overlap due to scale or may otherwise not be visible when mapped. Federal investments represent the total funding from the federal Health Center Program to grantees with a presence in the state in 2019.

Sources | Federally-Funded Delivery Site Locations: data.HRSA.gov, November 16, 2020. Health Center Patients and Federal Funding | 2019 Uniform Data System, Bureau of Primary Health Care, HRSA.



71

NUMBER OF DELIVERY SITES IN CONGRESSIONAL DISTRICT

(main organization in bold)

- BATTENKILL VALLEY HEALTH CENTER, INC.**
Battenkill Valley Health Center Inc. - 9 Church St Arlington, VT 05250-4457
- COMMUNITY HEALTH CENTERS OF BURLINGTON, INC.**
Burlington Hlth & Rehab Center - 300 Pearl St Burlington, VT 05401-8531
H.O. Wheeler School Dental Clinic - 6 Archibald St Burlington, VT 05401-4220
LUND Family Center - 76 Glen Rd Burlington, VT 05401-4131
Pearl Street Youth Health Center - 179 Pearl St Burlington, VT 05401-3704
Safe Harbor Health Center - 184 S Winooski Ave Burlington, VT 05401-4535
- COMMUNITY HEALTH CENTERS OF THE RUTLAND REGION**
Allen Pond Community Health Center - 71 Allen St Ste 403 Rutland, VT 05701-4570
Brandon Medical Center - 420 Grove St Brandon, VT 05733-9062
CHCRR Pediatrics - 1 General Wing Rd Rutland, VT 05701-4681
CHCRR Shoreham Family Health Center - 2987 Vt Route 22A Shoreham, VT 05770-9728
Community Dental - 69 Allen St Ste 10 Rutland, VT 05701-4564
Mettowee Valley Family Health Center - 278 Vt Route 149 West Pawlet, VT 05775-9798
Rutland Community Health Center - 215 Stratton Rd Rutland, VT 05701-4621
- COPLEY PROFESSIONAL SERVICES GROUP, INC.**
Behavioral Health and Wellness Center - 607 Washington Hwy Morrisville, VT 05661-8652
Stowe Family Practice - 1878 Mountain Rd Ste 3 Stowe, VT 05672-4775
- FIVE-TOWN HEALTH ALLIANCE, INC.**
MHC Mobile Health Unit - 61 Pine St Bldg 4 Bristol, VT 05443-1043
- GIFFORD HEALTH CARE, INC.**
Bethel Health Center - 1823 Vt Rte 107 Bethel, VT 05032-9324
Braintree Elementary School - 66 Bent Hill Rd Braintree, VT 05060-8810
Brookfield Elementary School - 1728 Ridge Rd Brookfield, VT 05036-9778
Chelsea Health Center - 356 Vt Rte 110 Chelsea, VT 05038-8993
Gifford Health Center at Berlin - 2418 Airport Rd Ste 1 Barre, VT 05641-8702
Kingwood Health Center - 1422 Vt Route 66 Randolph, VT 05060-7718
Randolph Elementary School - 40 Ayers Brook Rd Randolph, VT 05060-1012
Randolph Union Middle/High School - 15 Forest St Randolph, VT 05060-1006
Rochester Health Center - 235 S Main St Rochester, VT 05767-9683
- INDIAN STREAM HEALTH CENTER**
Indian Stream Health Center Satellite Site - 253 Gale St Canaan, VT 05903-9509



71

**NUMBER OF DELIVERY SITES IN
CONGRESSIONAL DISTRICT**

(main organization in bold)

● **LITTLE RIVERS HEALTH CARE, INC.**

Blue Mountain Union School - 2420 Route 302 Wells River, VT 05081-9750
Bradford - 437 S Main St Bradford, VT 05033-9196
Bradford Elementary School - Fairground Rd Bradford, VT 05033
Clara Martin Center - 1740 Lower Pln Bradford, VT 05033-8934
East Corinth - 720 Village Rd East Corinth, VT 05040-9783
Newbury Elementary School - US-5 Newbury, VT 05051
Oxbow High School - US-5 Bradford, VT 05033
Valley Vista - 23 Upper Pln Bradford, VT 05033-9016
Wells River - 65 Main St N Wells River, VT 05081-9692

● **NORTHEAST WASHINGTON COUNTY COMMUNITY HEALTH INC**

Cabot Health Services SBHC - 25 Common Rd Cabot, VT 05647-9731
Calais Elementary School - 321 Lightening Ridge Rd Plainfield, VT 05667-9318
Caledonia Central Supervisory Union Twinfield School - 106 Nasmith Brook Rd Plainfield, VT 05667-9060
East Montpelier Elementary School - 665 Vincent Flats Rd E Montpelier, VT 05651-4405
Maplehill School - E Hill Rd Plainfield, VT 05667
The Health Center - 157 Towne Ave Plainfield, VT 05667-9425
Vermont Dental Care Mobile - Po Box 320 Plainfield, VT 05667-0320

● **NORTHERN COUNTIES HEALTH CARE, INC**

Concord Health Center - 201 Main St Concord, VT 05824-9825
Danville Health Center - 26 Cedar Ln Danville, VT 05828-9751
Dental Unit At Island Pond - Po Box 425 Island Pond, VT 05846-0425
Hardwick Area Health Center - 4 Slapp HI Hardwick, VT 05843-9300
Island Pond Health Center - 82 Maple St Island Pond, VT 05846
Northern Counties Dental Center - 151 N Main St Hardwick, VT 05843-7065
Northern Express Care St. Johnsbury - 1 Eastern Ave Saint Johnsbury, VT 05819-2661
Orleans Dental Center - 11 Union St Orleans, VT 05860-1218
St. Johnsbury Community Health Center - 185 Sherman Dr Saint Johnsbury, VT 05819-9811

● **RICHFORD HEALTH CENTER, INC.**

Albarg Health Center - 64 Industrial Park Rd Alburgh, VT 05440
Enosburg Health Center - 382 Main St Enosburg Falls, VT 05450-6008
Fairfax Health Center - 1199 Main St Fairfax, VT 05454-9530
NOTCH Pharmacy - 44 Main St Ste 200 Richford, VT 05476-1141
Richford Dental Clinic - 44 Main St Ste 400 Richford, VT 05476-1141
St Albans Health Center - 3 Crest Rd Saint Albans, VT 05478-9753
Swanton Health Center - 26 Canada St Swanton, VT 05488-1335
Swanton Rexall - 44 Merchants Row Swanton, VT 05488-1420



71

**NUMBER OF DELIVERY SITES IN
CONGRESSIONAL DISTRICT**

(main organization in bold)

● **SPRINGFIELD MEDICAL CARE SYSTEM INC**

Chester Dental Center - 55 Main St Chester, VT 05143-9115

Elm Hill School Health Center - 10 Hoover St Springfield, VT 05156-2425

Lane Eye Associates - 441 River St North Springfield, VT 05150-9756

Ludlow Dental - 8 Main St Ludlow, VT 05149-1106

Ludlow Health Center - 1 Elm St Ludlow, VT 05149-1301

Mountain Valley Health Center - 38 Vt Route 11 Londonderry, VT 05148-9555

Riverside Middle School Health Center - 13 Fairground Rd Springfield, VT 05156-2112

Rockingham Health Center - 1 Hospital Ct Bellows Falls, VT 05101-1489

Springfield Health Center - 100 River St Springfield, VT 05156-2930

Springfield High School Health Center - 303 South St Springfield, VT 05156-3226

The Women's Health Center of Springfield - 29 Ridgewood Rd Fl A Springfield, VT 05156-3060

Union Street School Health Center - 43 Union St Springfield, VT 05156-3133