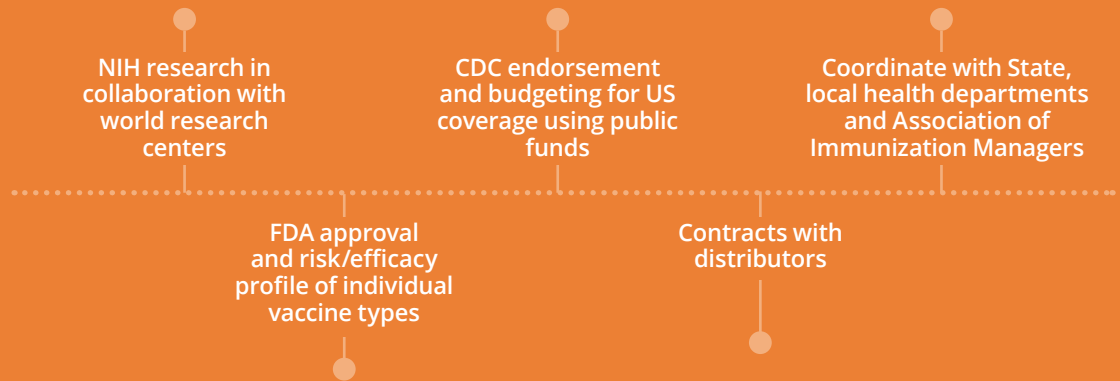


MICROPLANNING FOR COVID-19 VACCINE DELIVERY IN HEALTH CENTERS

JANUARY 2021



BEFORE THE VACCINE GETS TO THE HEALTH CENTER...



GET READY...



BOARD AND C-SUITE DETERMINE HEALTH CENTER ROLE IN RESPONSE

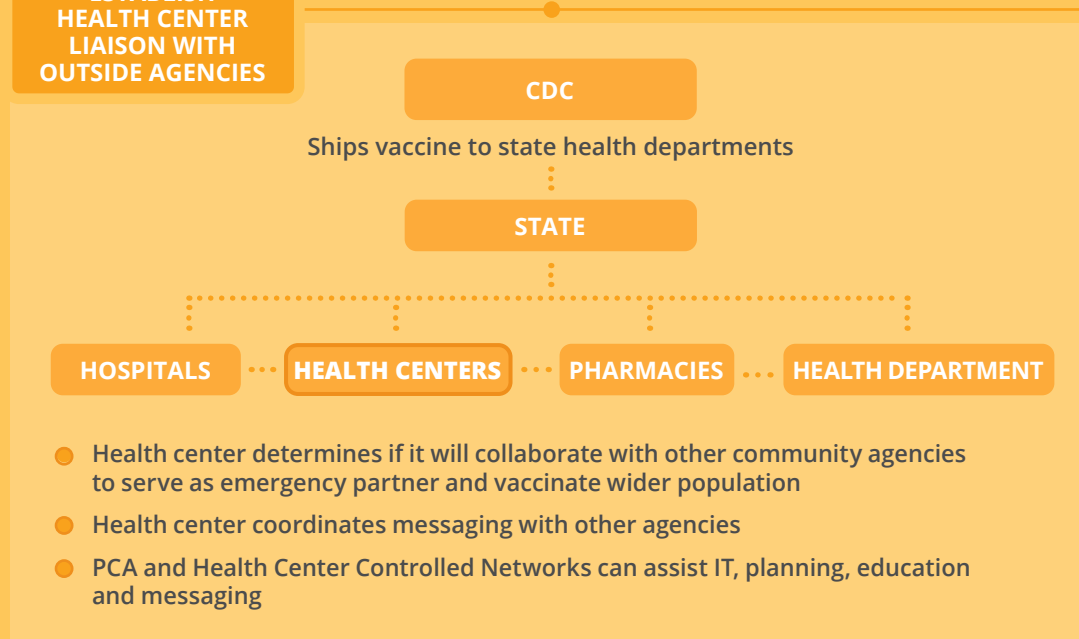
YOU MUST OPT IN!

- Enroll as vaccine provider with department of health contact
- Designate staff and sites for implementation
- Secure storage equipment and supplies for any vaccine possibility
- Detail hours and locations of immunization services
- Credential and train staff: pharmacy, dental, medical, behavioral as possibilities
- Secure refrigerator/freezers, storage space, supplies, PPE, electronic records
- Budget costs
- Designate staff to oversee supply process

BE DETAILED

ANTICIPATE EXPANSION

ESTABLISH HEALTH CENTER LIAISON WITH OUTSIDE AGENCIES



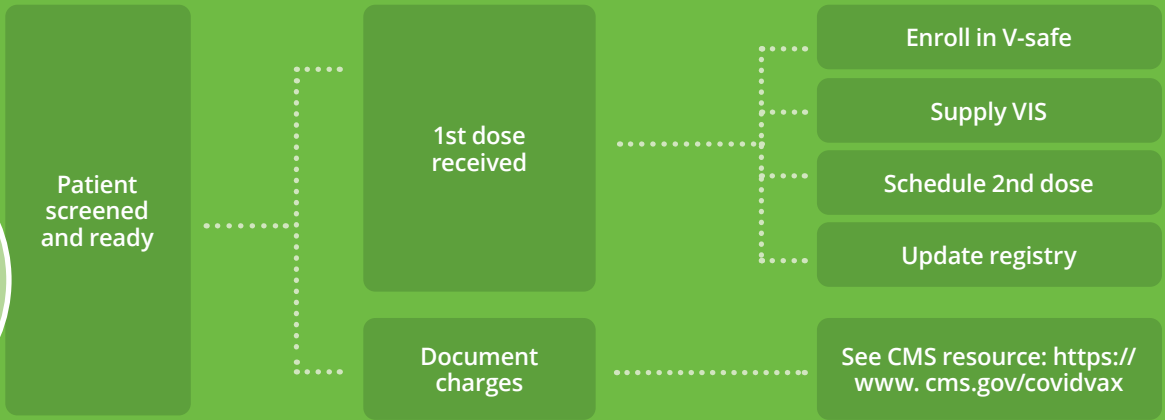
GET SET...



CORE LEADERSHIP TEAM OVERSEES FOUR MAJOR PLANNING AREAS

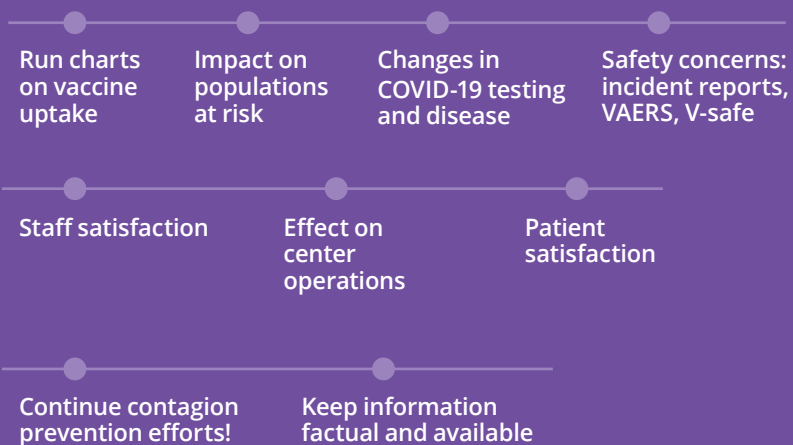
DESIGN WORKFLOW	DATA USE	EDUCATE & INFORM	ENGAGEMENT
<ul style="list-style-type: none"> • Patient intake process • Registration & screening • Delivery • Post-vaccine waiting time • Do a dress rehearsal 	<ul style="list-style-type: none"> • Plan for staff dosing being mindful of side effects and stagger delivery • Prepare a registry for staff, elderly and high risk as first tier recipients • Allow for two dose schedule • Plan daily vaccine delivery goals based on supply and population • Have IT & clinical leads collaborate 	<ul style="list-style-type: none"> • Designate lead in staff training • Separate vaccine training and delivery objectives by vaccine types • Plan for separate storage and safety tracking • Plan for weekly staff communication • Include Board in decision-making 	<ul style="list-style-type: none"> • Constantly update educational tools to population served: consider a hotline method or dedicated media site • Address vaccine hesitancy • Counter false claims • Identify cultural and social barriers to vaccination • Outreach to high risk groups

GO!



IT'S A MARATHON— STAY FLEXIBLE AND SAFE!

- TRACK YOUR EFFORTS** with strong IT leadership
- MONITOR CHANGES** in quality, clinical outcomes, finances, staffing and overall services
- REVISE AS NEEDED** and incorporate into long term operations



STAY IN THE RACE!



KEEP YOUR EYE ON THE FINISH LINE— DON'T FORGET FLU VACCINE!

