

# NATIONAL FINDINGS ON HEALTH CENTERS' RESPONSE TO COVID-19

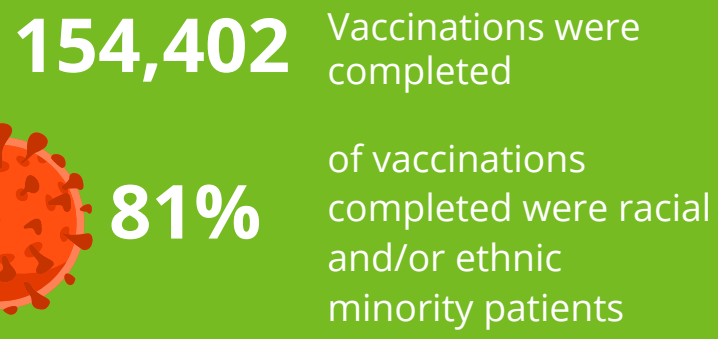
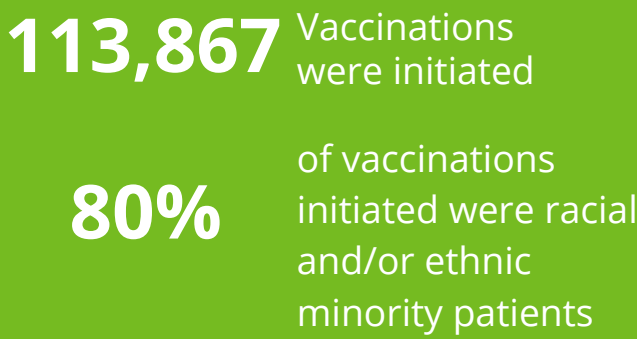
As of September 24, 2021

The Health Resources and Services Administration is surveying health centers bi-weekly to track their COVID-19 response. 79% (1,084) of health centers responded this fielding. To date, over **13 million** health center patients have been tested for COVID-19 and almost **16 million** vaccines have been completed.

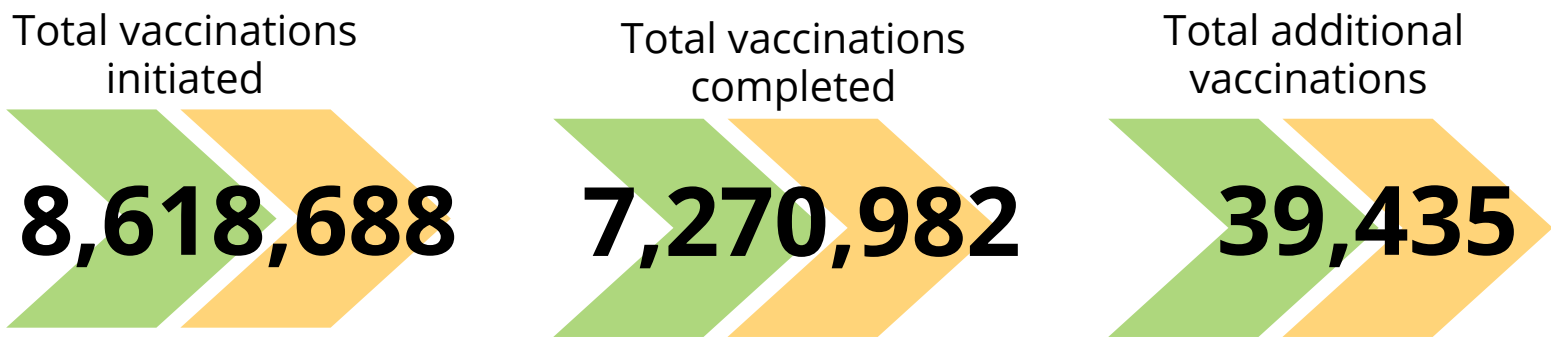
## Health Centers' Vaccine Events Past 2 Weeks:



## Past two week's COVID-19 vaccinations:



## SINCE JANUARY 1, 2021<sup>1</sup>:

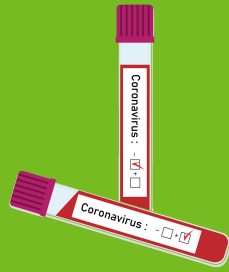


Past two weeks of COVID-19 virus detection

**499,539** Patients were tested

**59%**

of patients tested were racial and/or ethnic minorities



**53,022** Patients tested positive

**48%**

of patients tested positive were racial and/or ethnic minorities

SINCE APRIL 3RD, 2020:  
Total patients tested

**13,772,235**



Total patients testing positive

**1,647,860**

## Health Centers Continue to Have Issues with Test Result Turnaround Time and Administering the Vaccine

**47%**

of Health Centers Report COVID-19 Test Results Have a Turnaround Time of **less than 24 hours**

% of Health Centers That Have These Challenges with Vaccine Deployment:

Financial Reimbursement	~7%
Adequate Staff	~28%
Vaccine Confidence	~38%
Vaccine Storage	~3%
Vaccine Supply	~5%

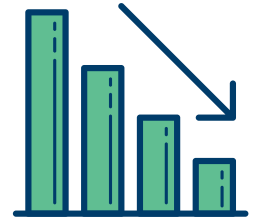
0% 10% 20% 30% 40%

## Ongoing Health Center Operations and COVID-19 Challenges:



**92%** of health centers conducted visits virtually

Health center visit rates remain below <sup>2</sup> normal at **93%**



**52%** of health centers provided access to Monoclonal Antibody therapies



**2,979** doses of Monoclonal Antibodies administered in the past week

Source and Notes: Data presented in this fact sheet come from the Bureau of Primary Health Care, Health Resources and Services Administration, Health Center COVID-19 Survey collected on September 24, 2021. 79% (1,084) of federally-funded health centers responded. Survey data are preliminary and do not reflect all health centers. Some duplication of patients tested from week to week may occur. For more information, please visit <https://bphc.hrsa.gov/emergency-response/coronavirus-healthcenter-data>.

1.Total reported refers to the number of respondents for COVID-19 testing since the survey period starting on April 3, 2020 and the number of respondents vaccinated since January 8 2021.

2. Visits refers to all visits regardless of service type (e.g. medical, dental, behavioral health, etc.), including virtual visits.

For more information, email [research@nachc.org](mailto:research@nachc.org) or visit [www.nachc.org/coronavirus](http://www.nachc.org/coronavirus).