



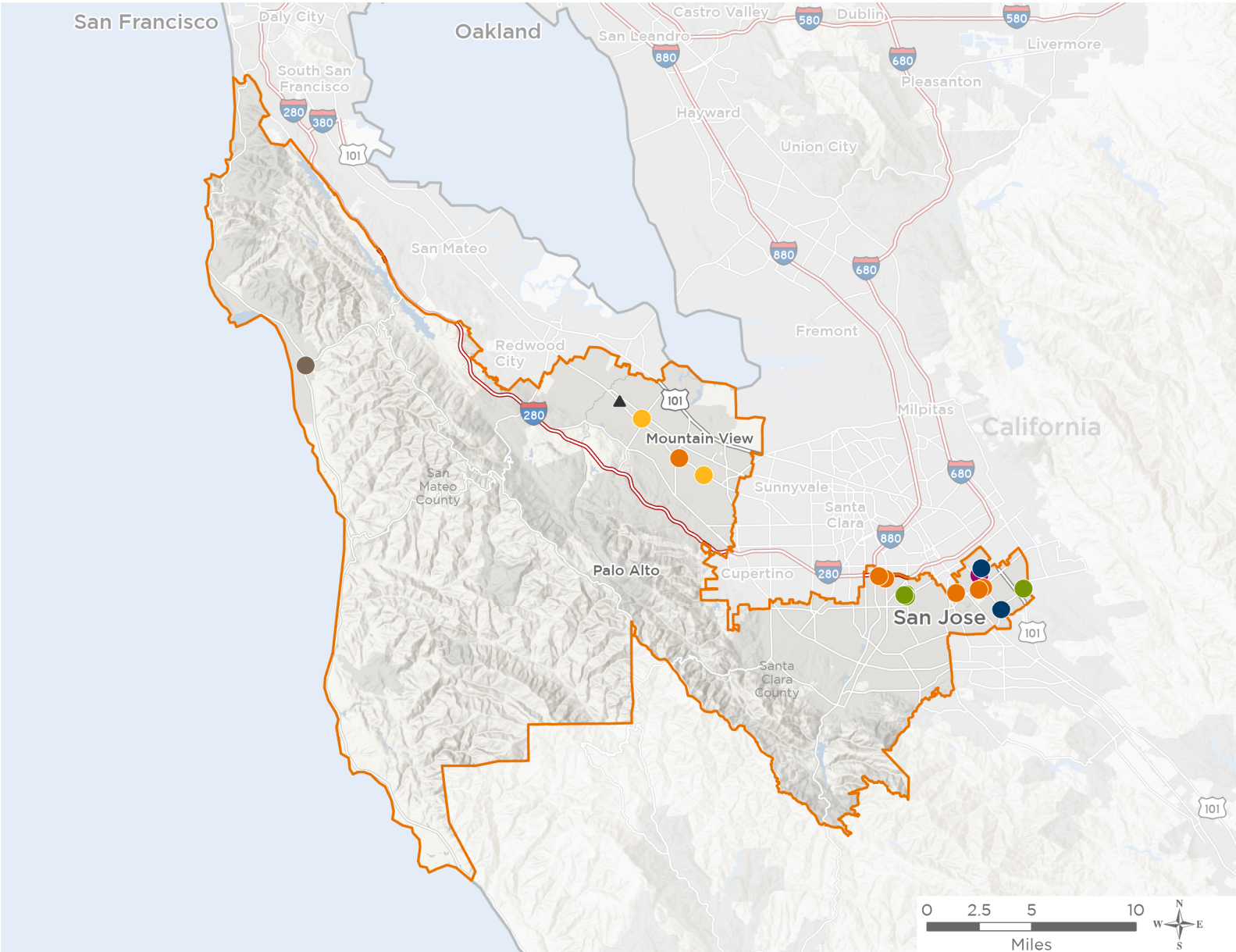
NATIONAL ASSOCIATION OF
Community Health Centers®

Representative Sam Liccardo

119th United States Congress

California's **16TH** Congressional District

The 7 federally-funded health center organizations with a presence in California's 16th Congressional District leverage **\$21,398,586** in federal investments to serve **127,654** patients.



27

NUMBER OF DELIVERY SITES IN CONGRESSIONAL DISTRICT

- Federally-funded Delivery Site (each color represents one organization)
- Health Center Program Look-Alikes
- 119th Congressional District Boundaries
- County Boundaries
- Interstates
- Highways
- Populated Places
- Major Roads

Notes | Delivery sites represent locations of organizations funded by the federal Health Center Program. Health Center Program Look-Alikes are community-based health care providers that meet the requirements of the HRSA Health Center Program, but do not receive Health Center Program funding. Some locations may overlap due to scale or may otherwise not be visible when mapped. Federal investments represent the total funding from the federal Health Center Program to grantees with a presence in the state in 2023.

Sources | Federally-Funded Delivery Site Locations and Health Center Program Look-Alikes: data.HRSA.gov, November 2024. Health Center Patients and Federal Funding | 2024 Uniform Data System, Bureau of Primary Health Care, HRSA.



27

NUMBER OF DELIVERY SITES IN CONGRESSIONAL DISTRICT

(main organization in bold)

● **BAY AREA COMMUNITY HEALTH**

Andrew Hill SB Health Clinic | 3200 Senter Rd San Jose, CA 95111-1332

Yerba Buena SB Health Clinic | 1855 Lucretia Ave San Jose, CA 95122-3730

● **COUNTY OF SANTA CLARA**

Homeless Clinic at HomeFirst Shelter | 2011 Little Orchard St San Jose, CA 95125-1031

Santa Clara Valley Dentalcare - Mountain View El Camino Real | 2486 W El Camino Real Mountain View, CA 94040-1421

Valley Health Center - Vietnamese American Service Center (VASC) | 2410 Senter Rd San Jose, CA 95111-1040

Valley Health Center San Jose | 750 S Bascom Ave San Jose, CA 95128-2603

Valley Health Center Tully | 500 Tully Rd San Jose, CA 95111-1917

VHC Moorpark- Internal Medicine | 2400 Moorpark Ave STE 220 San Jose, CA 95128-2630

VHC Moorpark-Internal Medicine | 2400 Moorpark Ave STE 212 San Jose, CA 95128-2624

VHC Moorpark-Maternal Fetal Medicine | 2400 Moorpark Ave STE 100 San Jose, CA 95128-2623

VHC Moorpark - Diagnostic Imaging | 2400 Moorpark Ave STE 214 San Jose, CA 95128-2624

VHC Moorpark - Lab | 2400 Moorpark Ave STE 105 San Jose, CA 95128-2623

VHC Moorpark - PACE Clinic | 2400 Moorpark Ave STE 316 San Jose, CA 95128-2625

VHC Moorpark -Internal Medicine | 2400 Moorpark Ave STE 204 San Jose, CA 95128-2624

VHC Moorpark Urgent Care | 2400 Moorpark Ave STE 118 San Jose, CA 95128-2623

● **INDIAN HEALTH CENTER OF SANTA CLARA VALLEY**

Behavior Health Clinic | 1118 Meridian Ave San Jose, CA 95125-4329

Indian Health Center of Santa Clara Valley - Behavior Health | 1685 Westwood Dr STE 1 San Jose, CA 95125-5104

Indian Health Center of Santa Clara Valley - Main Clinic | 1333 Meridian Ave San Jose, CA 95125-5212

Indian Health Center of Santa Clara Valley - Mobile Clinic | 1333 Meridian Ave San Jose, CA 95125-5212

Indian Health Center of Santa Clara Valley - Silver Creek | 1642 E Capitol Expy San Jose, CA 95121-1800

Indian Health Center of Santa Clara Valley - WIC | 1685 Westwood Dr STE 4 San Jose, CA 95125-5104

● **SAN MATEO COUNTY HEALTH**

Coastside Health Center | 225 Cabrillo Hwy S, Ste 100A Half Moon Bay, CA 94019-1738

Coastside Mental Health Center | 225 Cabrillo Hwy S FL 2 Half Moon Bay, CA 94019-8200

● **SCHOOL HEALTH CLINICS OF SANTA CLARA COUNTY**

Franklin Mckinley Neighbrhd Hlth Clinic | 645 Wool Creek Dr San Jose, CA 95112-2617

● **SOUTH COUNTY COMMUNITY HEALTH CENTER, INC.**

Mayview Community Health Center Mountain View a member of Ravenswood Family Health Network | 900 Miramonte Ave FL 2 Mountain View, CA 94040-2457

Mayview Community Health Center Palo Alto a member of Ravenswood Family Health Network | 270 Grant Ave Palo Alto, CA 94306-1911



NATIONAL ASSOCIATION OF
Community Health Centers®

Representative Sam Liccardo
119th United States Congress

California's **16TH** Congressional District

27

NUMBER OF DELIVERY SITES IN CONGRESSIONAL DISTRICT

(main organization in bold)

● **THE ASIAN AMERICANS FOR COMMUNITY INVOLVEMENT OF SANTA CLARA COUNTY, INC.**

AACI | 2400 Moorpark Ave, Ste 300 San Jose, CA 95128-2680

▲ **HEALTH CENTER PROGRAM LOOK-ALIKES**

Health Center Program Look-Alikes are community-based health care providers that meet the requirements of the HRSA Health Center Program, but do not receive Health Center Program funding.

PENINSULA HEALTHCARE CONNECTION, INC.

Peninsula Healthcare Connection | 33 Encina Ave STE 103 Palo Alto, CA 94301-2343