



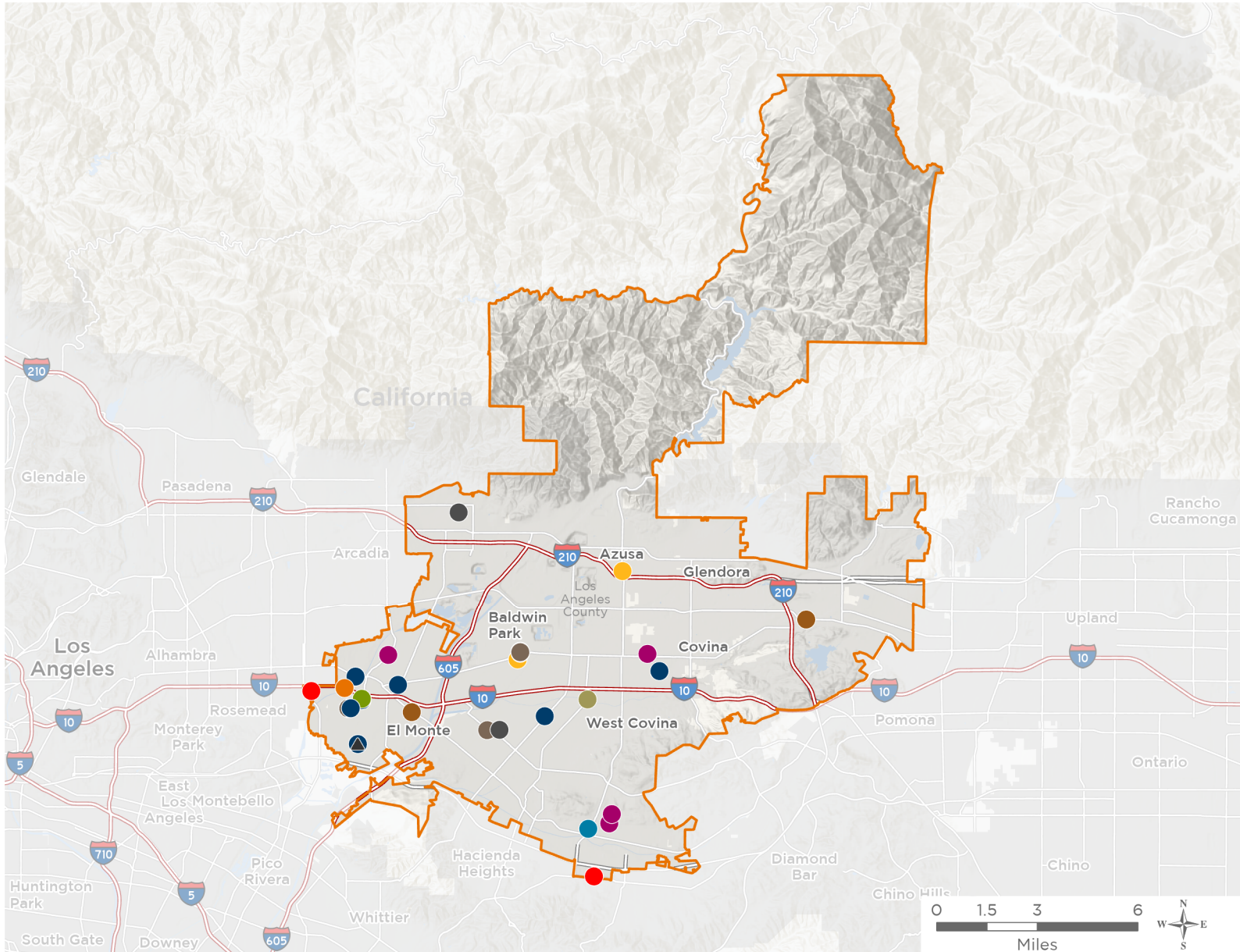
NATIONAL ASSOCIATION OF
Community Health Centers®

Representative Gil Cisneros

119th United States Congress

California's **31ST** Congressional District

The 11 federally-funded health center organizations with a presence in California's 31st Congressional District leverage **\$64,857,167** in federal investments to serve **569,832** patients.



37

NUMBER OF DELIVERY SITES IN CONGRESSIONAL DISTRICT

- Federally-funded Delivery Site (each color represents one organization)
- Health Center Program Look-Alikes
- 119th Congressional District Boundaries
- County Boundaries
- Interstates
- Highways
- Populated Places
- Major Roads

Notes | Delivery sites represent locations of organizations funded by the federal Health Center Program. Health Center Program Look-Alikes are community-based health care providers that meet the requirements of the HRSA Health Center Program, but do not receive Health Center Program funding. Some locations may overlap due to scale or may otherwise not be visible when mapped. Federal investments represent the total funding from the federal Health Center Program to grantees with a presence in the state in 2023.

Sources | Federally-Funded Delivery Site Locations and Health Center Program Look-Alikes: data.HRSA.gov, November 2024. Health Center Patients and Federal Funding | 2024 Uniform Data System, Bureau of Primary Health Care, HRSA.



37

NUMBER OF DELIVERY SITES IN CONGRESSIONAL DISTRICT

(main organization in bold)

● **ALTAMED HEALTH SERVICES CORPORATION**

AltaMed Medical and Dental Group: El Monte | 10418 Valley Blvd, #B El Monte, CA 91731-3600

AltaMed Medical and Dental Group: West Covina | 1300 S Sunset Ave West Covina, CA 91790-3342

AltaMed Medical Group: El Monte, Santa Anita | 3208 Santa Anita Ave STE 200 El Monte, CA 91733-1304

AltaMed PACE - Covina | 535 S 2nd Ave Covina, CA 91723-3013

AltaMed PACE - El Monte | 10420 Valley Blvd STE A El Monte, CA 91731-2402

AltaMed Pharmacy - West Covina | 1300 S Sunset Ave West Covina, CA 91790-3342

ChapCare by AltaMed Medical and Dental Group - El Monte, Peck | 3703 Peck Rd, Ste A El Monte, CA 91731-3542

ChapCare by AltaMed Medical Group - El Monte, Garvey | 10127 Garvey Ave El Monte, CA 91733-2066

ChapCare by AltaMed Medical Group - El Monte, Vacco | 10408 Vacco St South El Monte, CA 91733-3350

ChapCare by AltaMed Medical Group - Monrovia, Lime | 513 E Lime Ave, #101 Monrovia, CA 91016-2982

● **ASIAN PACIFIC HEALTH CARE VENTURE, INC.**

APHCV - El Monte/Rosemead Health Center | 9960 Baldwin Pl El Monte, CA 91731-2204

● **CENTER FOR FAMILY HEALTH & EDUCATION INC.**

Center for Family Health & Education, Inc. dba Priority Care Medical Group - El Monte 2 | 3229 Santa Anita Ave El Monte, CA 91733-1359

Center for Family Health & Education, Inc. dba Priority Care Medical Group El Monte 1 | 3229 Santa Anita Ave El Monte, CA 91733-1359

● **CENTRAL CITY COMMUNITY HEALTH CENTER, INC**

Central City Community Health Center, Inc.- Dental Mobile | 4126 Maine Ave Baldwin Park, CA 91706-3306

Central City Community Health Center, Inc.- Mobile 3 | 4126 Maine Ave Baldwin Park, CA 91706-3306

Central City Community Health Center, Inc. - Baldwin Park 2 | 4160 Maine Ave STE 1 Baldwin Park, CA 91706-3304

Central City Community Health Center, Inc. - El Monte | 10050 Garvey Ave STE 111 El Monte, CA 91733-2089

Central City Community Health Center, Inc. - La Puente | 13742 Amar Rd La Puente, CA 91746-1683

Central City Community Health Center. Inc. - Baldwin Park 1 | 4126 N Maine Ave Baldwin Park, CA 91706

● **EAST VALLEY COMMUNITY HEALTH CENTER, INC**

East Valley Community Health Center (EVCHC) El Monte | 4368 Santa Anita Ave El Monte, CA 91731-1606

East Valley Community Health Center | 420 S Glendora Ave West Covina, CA 91790-3001

East Valley Community Health Center Family Resource Center Dental & Vision | 17800 Renault St La Puente, CA 91744-5333

East Valley Community Health Center, Inc - El Monte | 4368 Santa Anita Ave El Monte, CA 91731

EVCHC - Covina Health Center | 276 W College St Covina, CA 91723-1902

EVCHC - Villacorta School Based Clinic | 17840 Villa Corta St La Puente, CA 91744-5342

● **EL PROYECTO DEL BARRIO, INC.**

Azusa Health Center | 150 N Azusa Ave Azusa, CA 91702-3521

Baldwin Park Health Center | 3940 Maine Ave Baldwin Park, CA 91706-4220



NATIONAL ASSOCIATION OF
Community Health Centers®

Representative Gil Cisneros
119th United States Congress

California's **31ST** Congressional District

37

NUMBER OF DELIVERY SITES IN CONGRESSIONAL DISTRICT

(main organization in bold)

● **FRIENDS OF FAMILY HEALTH CENTER**

Friends of Family Health Center - La Puente | 565 S Azusa Way La Puente, CA 91744

● **HERALD CHRISTIAN HEALTH CENTER**

HCHC-El Monte | 3401 Aero Jet Ave El Monte, CA 91731-2801

HCHC - City of Industry | 1661 Hanover Rd STE 103 City Of Industry, CA 91748-5705

● **MISSION CITY COMMUNITY NETWORK, INC**

Mission City Community Network- La Puente | 1025 Willow Ave La Puente, CA 91746-1617

Mission City Community Network - Monrovia | 513 E Lime Ave STE 103 Monrovia, CA 91016-2983

● **NORTHEAST VALLEY HEALTH CORPORATION**

East Valley Community Health Ctr | 420 S Glendora Ave West Covina, CA 91790-3001

● **SOUTHERN CALIFORNIA MEDICAL CENTER, INC.**

Southern California Medical Center - Mobile Clinic | 314 W Arrow Hwy San Dimas, CA 91773-2931

Southern California Medical Center - San Dimas | 314 W Arrow Hwy San Dimas, CA 91773-2931

Southern California Medical Center | 12100 Valley Blvd STE 109A El Monte, CA 91732-3161

Southern California Medical Center El Monte 2 | 12100 Valley Blvd STE 112 El Monte, CA 91732-3100

▲ **HEALTH CENTER PROGRAM LOOK-ALIKES**

Health Center Program Look-Alikes are community-based health care providers that meet the requirements of the HRSA Health Center Program, but do not receive Health Center Program funding.

BUDDHIST TZU CHI MEDICAL FOUNDATION

Tzu Chi Community Clinic, South El Monte | 10414 Vacco St South El Monte, CA 91733-3350

TZu Chi Mobile Unit, Dental | 10414 Vacco St South El Monte, CA 91733-3350

Tzu Chi Mobile Unit, Medical | 10414 Vacco St South El Monte, CA 91733-3350

Tzu Chi Mobile Unit, Vision | 10414 Vacco St South El Monte, CA 91733-3350