



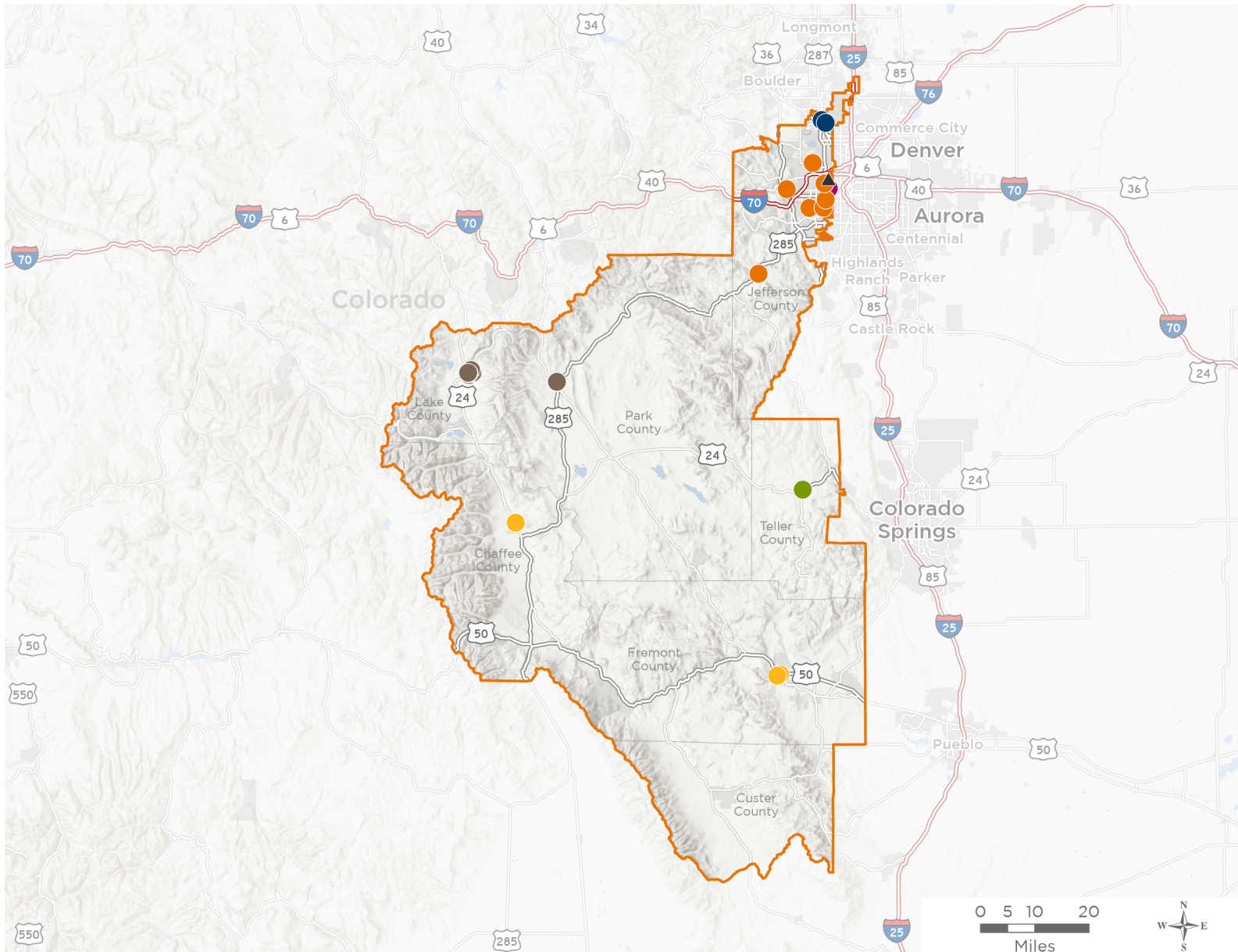
NATIONAL ASSOCIATION OF
Community Health Centers®

Representative Brittany Pettersen

119th United States Congress

Colorado's **7TH** Congressional District

The 6 federally-funded health center organizations with a presence in Colorado's 7th Congressional District leverage **\$49,000,046** in federal investments to serve **250,227** patients.



- Federally-funded Delivery Site (each color represents one organization)
- Health Center Program Look-Alikes
- 119th Congressional District Boundaries
- County Boundaries
- Populated Places
- Interstates
- Highways
- Major Roads

22

**NUMBER OF DELIVERY SITES
IN CONGRESSIONAL DISTRICT**

Notes | Delivery sites represent locations of organizations funded by the federal Health Center Program. Health Center Program Look-Alikes are community-based health care providers that meet the requirements of the HRSA Health Center Program, but do not receive Health Center Program funding. Some locations may overlap due to scale or may otherwise not be visible when mapped. Federal investments represent the total funding from the federal Health Center Program to grantees with a presence in the state in 2023.

Sources | Federally-Funded Delivery Site Locations and Health Center Program Look-Alikes: data.HRSA.gov, November 2024. Health Center Patients and Federal Funding | 2024 Uniform Data System, Bureau of Primary Health Care, HRSA.



22

NUMBER OF DELIVERY SITES IN CONGRESSIONAL DISTRICT

(main organization in bold)

● **CLINICA CAMPESINA/FAMILY HEALTH SERVICES**

Clinica Family Health & Wellness -- Broomfield Clinic | 897 US Highway 287 Broomfield, CO 80020-7000
Emerald Elementary School | 275 Emerald St Broomfield, CO 80020-2373

● **METRO COMMUNITY PROVIDER NETWORK INC**

STRIDE CHC - Conifer | 11030 Kitty Dr Conifer, CO 80433-7767
STRIDE CHC - Mobile Health Unit #2 | 7495 W 29th Ave Wheat Ridge, CO 80033-8002
STRIDE CHC -Alameda | 7944 W Arizona Ave Denver, CO 80228
STRIDE CHC - Mobile Health Care Unit | 11005 Ralston Rd Arvada, CO 80004-4551
STRIDE CHC - Alameda High School | 1255 S Wadsworth Blvd Lakewood, CO 80232-5406
STRIDE CHC - Golden High School | 701 24th St Golden, CO 80401-2379
STRIDE CHC - Rose Stein Elementary School | 80 S Teller St Lakewood, CO 80226-2044
STRIDE CHC - Wheat Ridge | 7495 W 29th Ave Wheat Ridge, CO 80033-8002

● **PEAK VISTA COMMUNITY HEALTH CENTERS**

Health Center at Divide | 34 Hybrook Rd S Divide, CO 80814-9219

● **SUMMIT COMMUNITY CARE CLINIC, INC.**

Care Clinic Lake County | 735 US Highway 24 Leadville, CO 80461-3952
Care Clinic Park County | 548 Front St Fairplay, CO 80440-5001
Lake County Dental | 223 Harrison Ave Leadville, CO 80461-3392
Lake County Elementary | 130 W 12th St Leadville, CO 80461-3415
Lake County High School | 1000 W 4th St Leadville, CO 80461-3800
Lake County Intermediate School | 1000 W 6th St Leadville, CO 80461-3890
Park County RE-2 SBHC | 640 Hathaway St Fairplay, CO 80440-5204

● **THE COLORADO COALITION FOR THE HOMELESS**

Renaissance Children's Center | 1797 Kendall St Lakewood, CO 80214-1454

● **VALLEY-WIDE HEALTH SYSTEMS**

The Pulse School-Based Health Center | 1215 Main St STE B Canon City, CO 81212-3505
Valley-Wide Buena Vista | 707 US Highway 24 N Buena Vista, CO 81211-9863
Valley-Wide Canon City | 121 N 6th St Canon City, CO 81212-3329

▲ **HEALTH CENTER PROGRAM LOOK-ALIKES**

Health Center Program Look-Alikes are community-based health care providers that meet the requirements of the HRSA Health Center Program, but do not receive Health Center Program funding.

INNER CITY HEALTH CENTER

Wheat Ridge Family Health Clinic | 6301 W 38th Ave BLDG Wheat Ridge, CO 80033-5057