



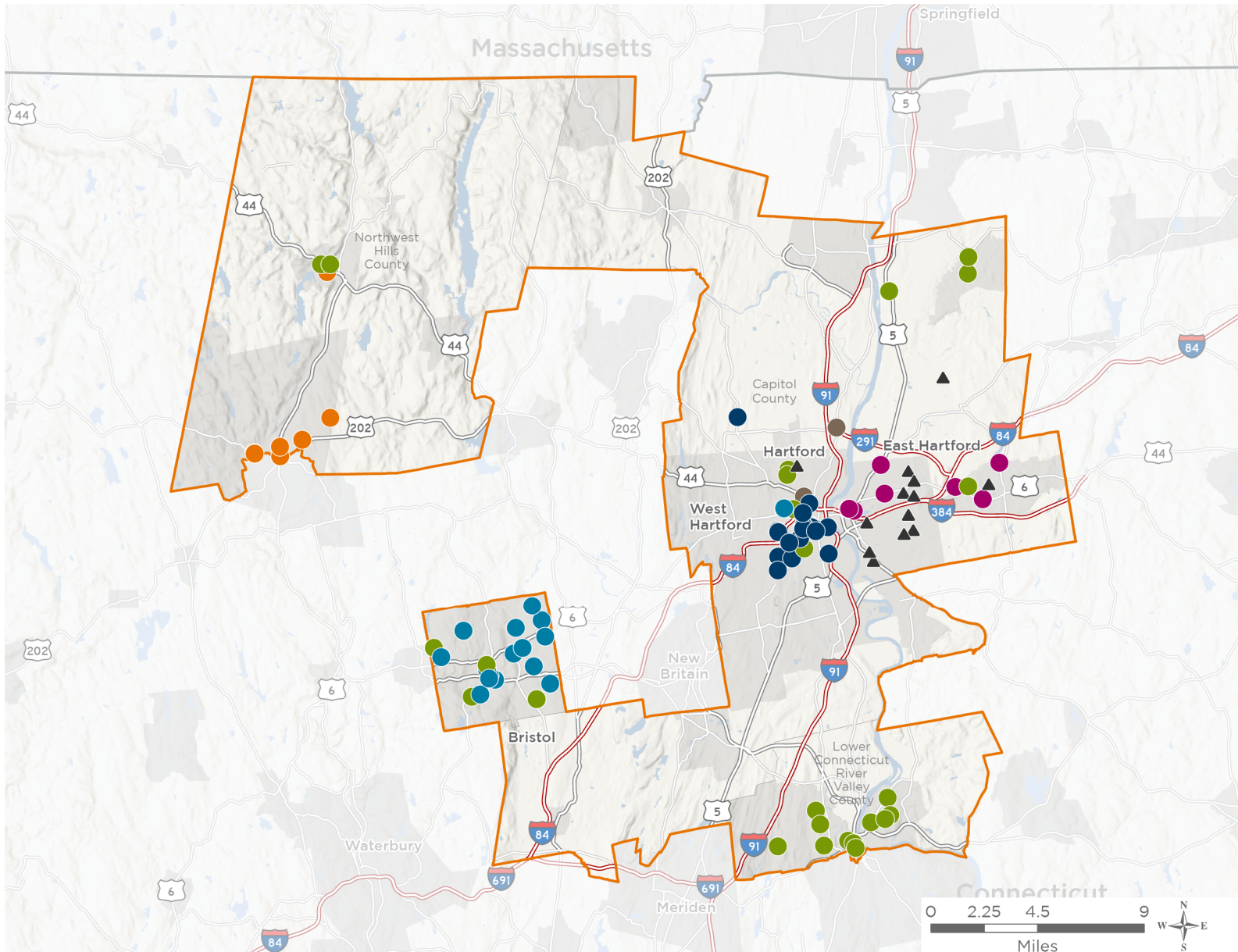
NATIONAL ASSOCIATION OF
Community Health Centers®

Representative John B. Larson

119th United States Congress

Connecticut's **1ST** Congressional District

The 7 federally-funded health center organizations with a presence in Connecticut's 1st Congressional District leverage **\$25,449,358** in federal investments to serve **188,502** patients.



89

**NUMBER OF DELIVERY SITES
IN CONGRESSIONAL DISTRICT**

- Federally-funded Delivery Site (each color represents one organization)
- Health Center Program Look-Alikes
- 119th Congressional District Boundaries
- County Boundaries
- Populated Places
- Interstates
- Highways
- Major Roads

Notes | Delivery sites represent locations of organizations funded by the federal Health Center Program. Health Center Program Look-Alikes are community-based health care providers that meet the requirements of the HRSA Health Center Program, but do not receive Health Center Program funding. Some locations may overlap due to scale or may otherwise not be visible when mapped. Domestic violence shelters are mapped at the Health Center administrative site and do not represent service delivery site locations. Federal investments represent the total funding from the federal Health Center Program to grantees with a presence in the state in 2023.

Sources | Federally-Funded Delivery Site Locations and Health Center Program Look-Alikes: data.HRSA.gov, November 2024. Health Center Patients and Federal Funding | 2024 Uniform Data System, Bureau of Primary Health Care, HRSA.

© 2025 National Association of Community Health Centers, Inc. All rights reserved. For more information, please contact federalaffairs@nachc.org.



89

NUMBER OF DELIVERY SITES IN CONGRESSIONAL DISTRICT

(main organization in bold)

● **CHARTER OAK HEALTH CENTER, INC.**

175 Main Street | 175 Main St Hartford, CT 06106-1818

45 Wadsworth Street | 45 Wadsworth St Hartford, CT 06106-7108

A.I. Prince Technical School | 500 Brookfield St Hartford, CT 06106-3709

Charter Oak Health Center | 401 New Britain Ave Hartford, CT 06106-3833

Charter Oak Health Center 33 Grand Street | 33 Grand St Hartford, CT 06106-4607

Charter Oak Health Center Annex at 39 Grand Street | 39 Grand St Hartford, CT 06106-4607

Charter Oak Health Center Bloomfield | 693 Bloomfield Ave Bloomfield, CT 06002-2489

Charter Oak Health Center, Inc. | 21 Grand St Hartford, CT 06106-1541

Charter Oak Health Center; 32 Grand Street | 32 Grand St Hartford, CT 06106-4658

Hartford Youth Scholars | 129 Allen Pl Hartford, CT 06106-3102

High Roads School of Hartford: High School | 245 Locust St Hartford, CT 06114-2017

High Roads School of Hartford: Primary and Middle School | 757 New Britain Ave Hartford, CT 06106-3913

House Of Bread | 27 Chestnut St Hartford, CT 06120-2810

Immaculate Conception Shelter | 574 Park St Hartford, CT 06106-4617

Open Hearth | 437 Sheldon St Hartford, CT 06106-1939

Parkville Community Elementary School | 1755 Park St Hartford, CT 06106-2160

Parkville Community School | 47 New Park Ave Hartford, CT 06106-2168

South Park Inn | 75 Main St Hartford, CT 06106-1806

Thomas J. McDonough Middle School | 111 Hillside Ave Hartford, CT 06106-3018

YWCA Of The Hartford Region, Inc | 135 Broad St Hartford, CT 06105-3718

● **COMMUNITY HEALTH AND WELLNESS CENTER OF GREATER TORRINGTON, INC**

Community Health and Wellness Center | 10 Center St Winsted, CT 06098-1623

Community Health and Wellness Center of Greater Torrington | 469 Migeon Ave Torrington, CT 06790-4643

Forbes Elementary School | 500 Migeon Ave Torrington, CT 06790-4644

Mobile Medical Unit | 469 Migeon Ave Torrington, CT 06790-4643

Oliver Wolcott Vocational Technical School | 75 Oliver St Torrington, CT 06790-3859

Torrington Elementary School | 800 Charles St Torrington, CT 06790-3495

Torrington High School | 50 Major Besse Dr Torrington, CT 06790-3721

Torrington Middle School | 200 Middle School Dr Torrington, CT 06790-3168

● **COMMUNITY HEALTH CENTER, INCORPORATED**

Bristol Central High School SBHC | 480 Wolcott St Bristol, CT 06010-6497

Bristol Preparatory Academy/Adult Education Center SBHC | 210 Redstone Hill Rd STE 5 Bristol, CT 06010-7796

Bristol Technical High School | 431 Minor St Bristol, CT 06010-2269

Broad Brook Elementary SBHC | 14 Rye St Broad Brook, CT 06016-9552

Brownstone Intermediate School SBHC | 314 Main St Portland, CT 06480-1877

CHC Mobile Health Unit #1 | 675 Main St Middletown, CT 06457-2732



89

**NUMBER OF DELIVERY SITES IN
CONGRESSIONAL DISTRICT**

(main organization in bold)

CHC of Hartford | 76 New Britain Ave Hartford, CT 06106-3305

CHC of Middletown | 675 Main St Middletown, CT 06457-2732

Commodore Macdonough Elementary School - SBHC (Rita Hayes Wellness Center) | 66 Spring St Middletown, CT 06457-2262

Community Health Center of Bristol | 395 N Main St Bristol, CT 06010-4924

East Windsor High School SBHC | 76 S Main St East Windsor, CT 06088-9741

East Windsor Middle School SBHC | 38 Main St Broad Brook, CT 06016-9602

Eddy Center Adult Shelter | Undisclosed Address

Gildersleeve Elementary School SBHC | 575 1/2 Main St Portland, CT 06480-1103

Jumoke Academy Hartford Conservatory SBHC | 875 Asylum Ave RM 305 Hartford, CT 06105-1906

Jumoke Academy SMaRT SBHC | 339 Blue Hills Ave RM 138 Hartford, CT 06112-1505

Lawrence Elementary School SBHC | Kaplan Dr Middletown, CT 06457-1865

Mary P. Hinsdale - SBHC | 15 Hinsdale Ave Winsted, CT 06098-1107

Middletown Expulsion Program SBHC | 398 Main St Middletown, CT 06457-3310

Middletown High School SBHC | 200 La Rosa Ln Middletown, CT 06457-2148

Moody Elementary School SBHC | 300 Country Club Rd Middletown, CT 06457-2302

Odyssey Community School SBHC | 579 Middlesex Tnpk RM 149 Manchester, CT 06040-2728

Portland Middle and High School SBHC | 93 High St # 95 Portland, CT 06480-1656

Spencer Elementary School SBHC | 207 Westfield St Middletown, CT 06457-2042

The Isabelle Pearson School SBHC | 2 Wetmore Ave Winsted, CT 06098-1242

Thelma Ellis Dickerson's Jumoke Academy Elementary SBHC | 250 Blue Hills Ave RM Conf Hartford, CT 06112-1836

Valley View Elementary School SBHC | 81 High St Portland, CT 06480-1656

COMMUNITY HEALTH SERVICES, INCORPORATED

Community Health Services at Windsor | 503 Windsor Ave Windsor, CT 06095-4015

Community Health Services, Inc. | 500 Albany Ave Hartford, CT 06120-2508

FIRST CHOICE HEALTH CENTERS, INC.

444 Center Street, 3rd fl, Manchester CHR | 444 Center St Manchester, CT 06040-3926

478 Burnside Ave East Hartford, CT 06108 | 478 Burnside Ave East Hartford, CT 06108-2425

FCHC Mobile Health Services | 94 Connecticut Blvd East Hartford, CT 06108-3013

FCHC Mobile Medical Services (2) | 94 Connecticut Blvd East Hartford, CT 06108-3013

First Choice @ Howell Cheney Technical High School | 791 Middle Tpke W Manchester, CT 06040-1819

First Choice Health Centers (Suite 230) | 150 N Main St Manchester, CT 06042-2086

First Choice Health Centers (Suite 240) | 150 N Main St Manchester, CT 06042-2086

First Choice Health Centers | 110 Connecticut Blvd East Hartford, CT 06108-3013

First Choice Health Centers | 265 Ellington Rd East Hartford, CT 06108-1176

First Choice Health Centers | 94 Connecticut Blvd East Hartford, CT 06108-3013

First Choice@809 Main Street | 809 Main St East Hartford, CT 06108-3117

First Choice@92 Connecticut Blvd | 92 Connecticut Blvd East Hartford, CT 06108-3013



89

NUMBER OF DELIVERY SITES IN CONGRESSIONAL DISTRICT

(main organization in bold)

● **MASSACHUSETTS LEAGUE OF COMMUNITY HEALTH CENTERS INC**

Community Health Services | 500 Albany Ave Hartford, CT 06120-2508

● **WHEELER CLINIC INC**

Bristol Arts and Innovation Magnet School | 70 Memorial Blvd Bristol, CT 06010-6568

Bristol Central High School | 480 Wolcott St Bristol, CT 06010-6497

Bristol Eastern High School | 632 King St Bristol, CT 06010-9202

Bristol Family Health and Wellness Center | 1 Hope St Bristol, CT 06010-6374

Bristol Health & Wellness Behavioral Health Center | 225 N Main St Bristol, CT 06010-4926

Bristol Preparatory Academy | 210 Redstone Hill Rd Bristol, CT 06010-7796

Chippens Hill Middle School | 551 Peacedale St Bristol, CT 06010-8939

Edgewood Pre-Kindergarten Academy | 345 Mix St Bristol, CT 06010-2705

Greene-Hills School | 718 Pine St Bristol, CT 06010-6923

Hartford Family Health & Wellness Center | 43 Woodland St Hartford, CT 06105-2363

Hubbell School | 90 W Washington St Bristol, CT 06010-5485

Ivy Drive School | 160 Ivy Dr Bristol, CT 06010-3303

Mountain View School | 71 Vera Rd Bristol, CT 06010-4857

Northeast Middle School | 530 Stevens St Bristol, CT 06010-2587

South Side School | 21 Tuttle Rd Bristol, CT 06010-9475

Stafford School | 212 Louisiana Ave Bristol, CT 06010-4456

West Bristol School | 500 Clark Ave Bristol, CT 06010-9601

Wheeler Family Health and Wellness Center - 49 | 49 Woodland St Hartford, CT 06105-2337

Wheeler Health and Wellness Center | 10 N Main St Bristol, CT 06010-8122

▲ **HEALTH CENTER PROGRAM LOOK-ALIKES**

Health Center Program Look-Alikes are community-based health care providers that meet the requirements of the HRSA Health Center Program, but do not receive Health Center Program funding.

INTERCOMMUNITY INC

777 Burnside Ave | 777 Burnside Ave East Hartford, CT 06108-2705

InterCommunity's School Based Health Center at Franklin Mayberry Elementary School | 101 Great Hill Rd East Hartford, CT 06108-2833

Intercommunity's school based health center at Hockanum Elementary School | 191 Main St East Hartford, CT 06118-3603

InterCommunity's School Based Health Center at Langford Elementary School | 61 Alps Dr East Hartford, CT 06108-1402

InterCommunity's School Based Health Center at Silver Lane School | 15 Mercer Ave East Hartford, CT 06118-1517

InterCommunity's School Based Health Center at Synergy Alternative High School | 40 Butternut Dr East Hartford, CT 06118-1906



NATIONAL ASSOCIATION OF
Community Health Centers®

Representative John B. Larson
119th United States Congress

Connecticut's **1ST** Congressional District

89

**NUMBER OF DELIVERY SITES IN
CONGRESSIONAL DISTRICT**

(main organization in bold)

InterCommunity's Trantolo Health Center at East Hartford High School | 869 Forbes St East Hartford, CT 06118-1958

InterCommunity Inc. | 16 Coventry St Hartford, CT 06112-1524

InterCommunity Mobile Van #1 | 16 Coventry St Bldg Hartford, CT 06112-1524

InterCommunity SBHC Illing Middle School | 227 Middle Tpke W Manchester, CT 06040-4047

InterCommunity South Windsor | 828 Sullivan Ave BLDG 1 South Windsor, CT 06074-2093

InterCommunity Woodland K-12 SBHC | 110 Long Hill Dr BLDG East Hartford, CT 06108-3809

InterCommunity, Inc. | 281 Main St East Hartford, CT 06118-1823

Sunset Ridge Middle School Based Health Center | 450 Forbes St East Hartford, CT 06118-1716