



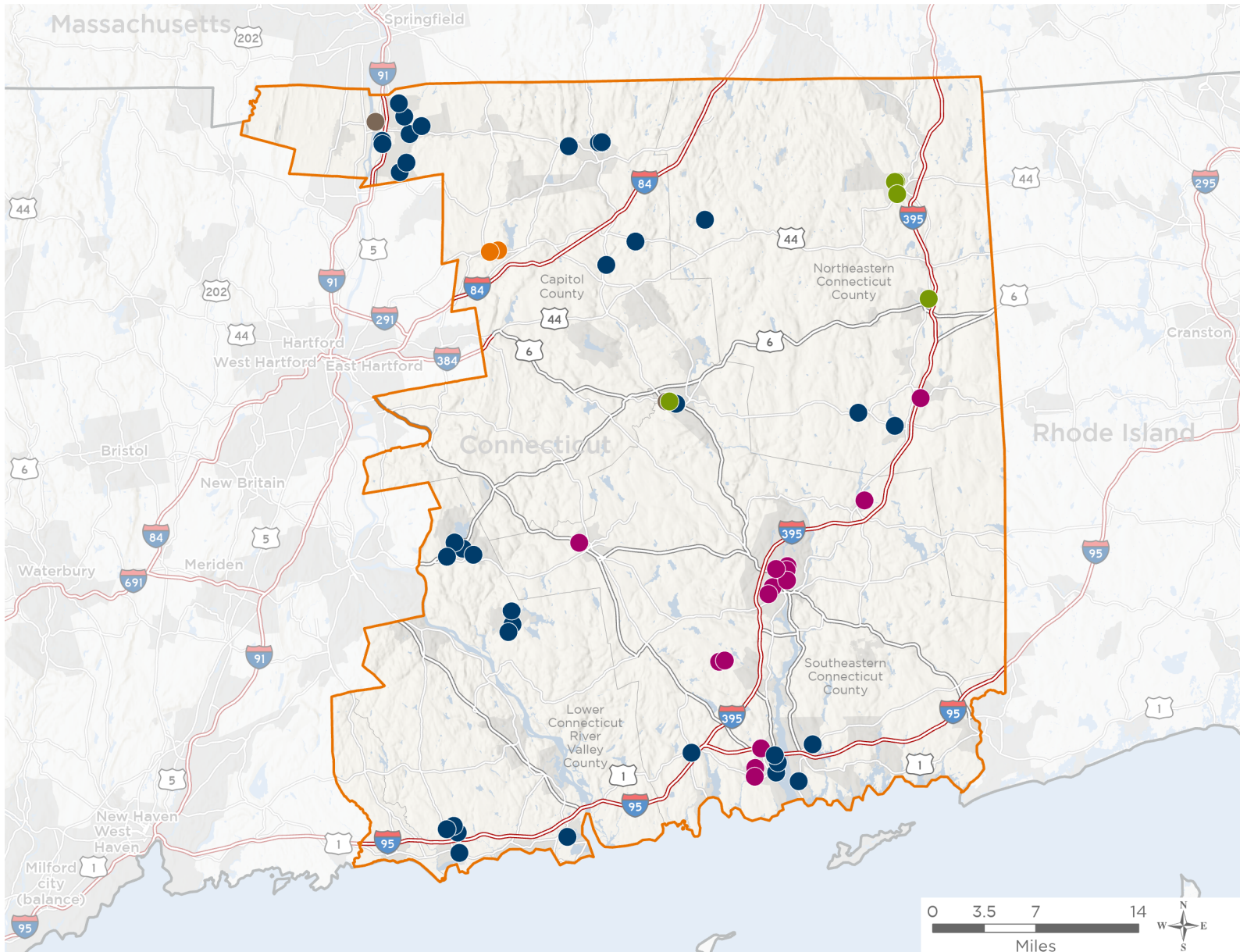
NATIONAL ASSOCIATION OF
Community Health Centers®

Representative Joe Courtney

119th United States Congress

Connecticut's **2ND** Congressional District

The 5 federally-funded health center organizations with a presence in Connecticut's 2nd Congressional District leverage **\$16,382,570** in federal investments to serve **160,866** patients.



65

**NUMBER OF DELIVERY SITES
IN CONGRESSIONAL DISTRICT**

- Federally-funded Delivery Site (each color represents one organization)
- ▲ Health Center Program Look-Alikes
- 119th Congressional District Boundaries
- County Boundaries
- Populated Places
- Interstates
- Highways
- Major Roads

Notes | Delivery sites represent locations of organizations funded by the federal Health Center Program. Health Center Program Look-Alikes are community-based health care providers that meet the requirements of the HRSA Health Center Program, but do not receive Health Center Program funding. Some locations may overlap due to scale or may otherwise not be visible when mapped. Federal investments represent the total funding from the federal Health Center Program to grantees with a presence in the state in 2023.

Sources | Federally-Funded Delivery Site Locations and Health Center Program Look-Alikes: data.HRSA.gov, November 2024. Health Center Patients and Federal Funding | 2024 Uniform Data System, Bureau of Primary Health Care, HRSA.



65

NUMBER OF DELIVERY SITES IN CONGRESSIONAL DISTRICT

(main organization in bold)

● **COMMUNITY HEALTH CENTER, INCORPORATED**

- Arts at the Capitol Theater SBHC | 896 Main St Willimantic, CT 06226-2310
- Ashford School SBHC | 440 Westford Rd Ashford, CT 06278-2538
- Center Elementary School SBHC | 12 Old Farms Rd Willington, CT 06279-1718
- Center School SBHC | 7 Summit St East Hampton, CT 06424-1219
- Community Health Center of Groton | 481 Gold Star Hwy STE 100 Groton, CT 06340-6702
- Community Health Center Of Clinton | 114 E Main St Clinton, CT 06413-2131
- Community Health Center Of Enfield | 5 N Main St Enfield, CT 06082-3372
- Community Health Center Of New London | 1 Shaws Cv New London, CT 06320-4902
- Community Health Center Of Old Saybrook | 263 Main St Old Saybrook, CT 06475-2326
- Dr. Helen Baldwin Middle School SBHC | 45 Westminster Rd Canterbury, CT 06331-1538
- Eagle Academy SBHC | 1270 Enfield St Enfield, CT 06082
- East Haddam Elementary School SBHC | 45 Joe Williams Rd Moodus, CT 06469-1128
- East Hampton High School SBHC | 15 N Maple St East Hampton, CT 06424-1018
- East Hampton Middle School SBHC | 19 Childs Rd East Hampton, CT 06424-1709
- East Lyme High School SBHC | 30 Chesterfield Rd RM A249A East Lyme, CT 06333-1201
- Edgar H Parkman School SBHC | 165 Weymouth Rd Enfield, CT 06082-6218
- Eli Whitney School SBHC | 94 Middle Rd Enfield, CT 06082-4594
- Eliot Middle School-SBHC | 69 Fairy Dell Rd Clinton, CT 06413-2403
- Enfield High School SBHC | 1264 Enfield St Enfield, CT 06082-4947
- Enfield Street School SBHC | 1318 Enfield St Enfield, CT 06082-4942
- Hall Memorial School SBHC | 111 River Rd RM 227 Willington, CT 06279-1842
- Hazardville Memorial School SBHC | 68 N Maple St Enfield, CT 06082-3904
- Henry Barnard School SBHC | 27 Shaker Rd Enfield, CT 06082-3100
- John F Kennedy Middle School SBHC | 155 Raffia Rd Enfield, CT 06082-5691
- Lewin G Joel School SBHC | 137A Glenwood Rd Clinton, CT 06413-1425
- Marine Science Magnet High School SBHC | 130 Shennecossett Rd Groton, CT 06340-5117
- Memorial School SBHC | 20 Smith St East Hampton, CT 06424-1677
- Nathan Hale Ray High School SBHC | 15 School Rd Moodus, CT 06469-1167
- Nathan Hale Ray Middle School SBHC | 73 Clark Gates Rd Moodus, CT 06469-1222
- Plainfield Central School SBHC | 75 Canterbury Rd Plainfield, CT 06374-1563
- Plainfield Memorial School SBHC | 95 Canterbury Rd Plainfield, CT 06374-1563
- Prudence Crandall School SBHC | 150 Brainard Rd Enfield, CT 06082-2649
- Stafford Elementary School | 11 Levinthal Run Stafford Springs, CT 06076-3744
- Stafford High School-SBHC | 145 Orcuttville Rd Stafford Springs, CT 06076-3730
- Stafford Middle School | 21 Levinthal Run Stafford Springs, CT 06076
- The Interdistrict School For Arts And Communication (Isaac) - SBHC | 190 Governor Winthrop Blvd New London, CT 06320-6612



65

NUMBER OF DELIVERY SITES IN CONGRESSIONAL DISTRICT

(main organization in bold)

The Morgan School SBHC | 71 Killingworth Tpke Clinton, CT 06413-1359

West Stafford Elementary School-SBHC | 153 W Stafford Rd Stafford Springs, CT 06076-1017

WYA New London Homeless Hospitality Center | 327 Huntington St New London, CT 06320-6214

FIRST CHOICE HEALTH CENTERS, INC.

First Choice Health Centers | 3 Prospect St Vernon Rockville, CT 06066-3215

First Choice@94 Union Street | 94 Union St Vernon, CT 06066-3131

GENERATIONS FAMILY HEALTH CENTER, INC

Generations Family Health Center - School Based Health Center at Putnam High School | 152 Woodstock Ave Putnam, CT 06260-1432

Generations Family Health Center - School Based Health Center at Putnam Public Schools | 35 Wicker St Putnam, CT 06260-1443

GENERATIONS FAMILY HEALTH CENTER, INC. - Danielson | 42 Reynolds St Danielson, CT 06239-2917

Generations Family Health Center, Inc. - Putnam | 202 Pomfret St Putnam, CT 06260-1833

Generations Family Health Center, Inc. | 40 Mansfield Ave Willimantic, CT 06226-2018

Generations Fhc - Norwich | 330 Washington St STE 510 Norwich, CT 06360-2733

GFHC Mobile Health Unit | 40 Mansfield Ave Willimantic, CT 06226-2018

MASSACHUSETTS LEAGUE OF COMMUNITY HEALTH CENTERS INC

Community Health Center, Inc. | 5 N Main St Enfield, CT 06082-3372

Generations Family Health Center | 1315 Main St Willimantic, CT 06226-1931

UNITED COMMUNITY AND FAMILY SERVICES, INC.

Leonard J. Tyl Middle School - School Based Health Center | 166 Chesterfield Rd Oakdale, CT 06370

Montville High School - School Based Health Center | 800 Old Colchester Rd Oakdale, CT 06370-2608

Norwich Free Academy - School Based Health Center | 305 Broadway Norwich, CT 06360-3547

Norwich Technical High School - School Based Health Center | 7 Mahan Dr Norwich, CT 06360-2425

UCFS at Global Studies Magnet Middle School | 15 Teachers Dr Norwich, CT 06360-4029

UCFS at Kelly STEAM Magnet Middle School | 25 Mahan Dr Norwich, CT 06360-2432

UCFS at Stanton Network Elementary School | 386 New London Tpke Norwich, CT 06360-5337

UCFS Behavioral Health Center - Colchester | 212 Upton Rd Colchester, CT 06415-2756

UCFS Behavioral Health Center - New London | 351 N Frontage Rd STE 24 New London, CT 06320-2628

UCFS Eldercare Health Center | 165 McKinley Ave Norwich, CT 06360-3509

UCFS Health Center - Norwich | 47 Town St Norwich, CT 06360-2323

UCFS Health Center - Plainfield | 120 Plainfield Rd Moosup, CT 06354-1632

UCFS Health Center Griswold | 226 E Main St Griswold, CT 06351-2110

UCFS School Based Health Center at Clark Lane Middle School | 105 Clark Ln Waterford, CT 06385-2120

UCFS School Based Health Center at Waterford High School | 20 Rope Ferry Rd Waterford, CT 06385-2850