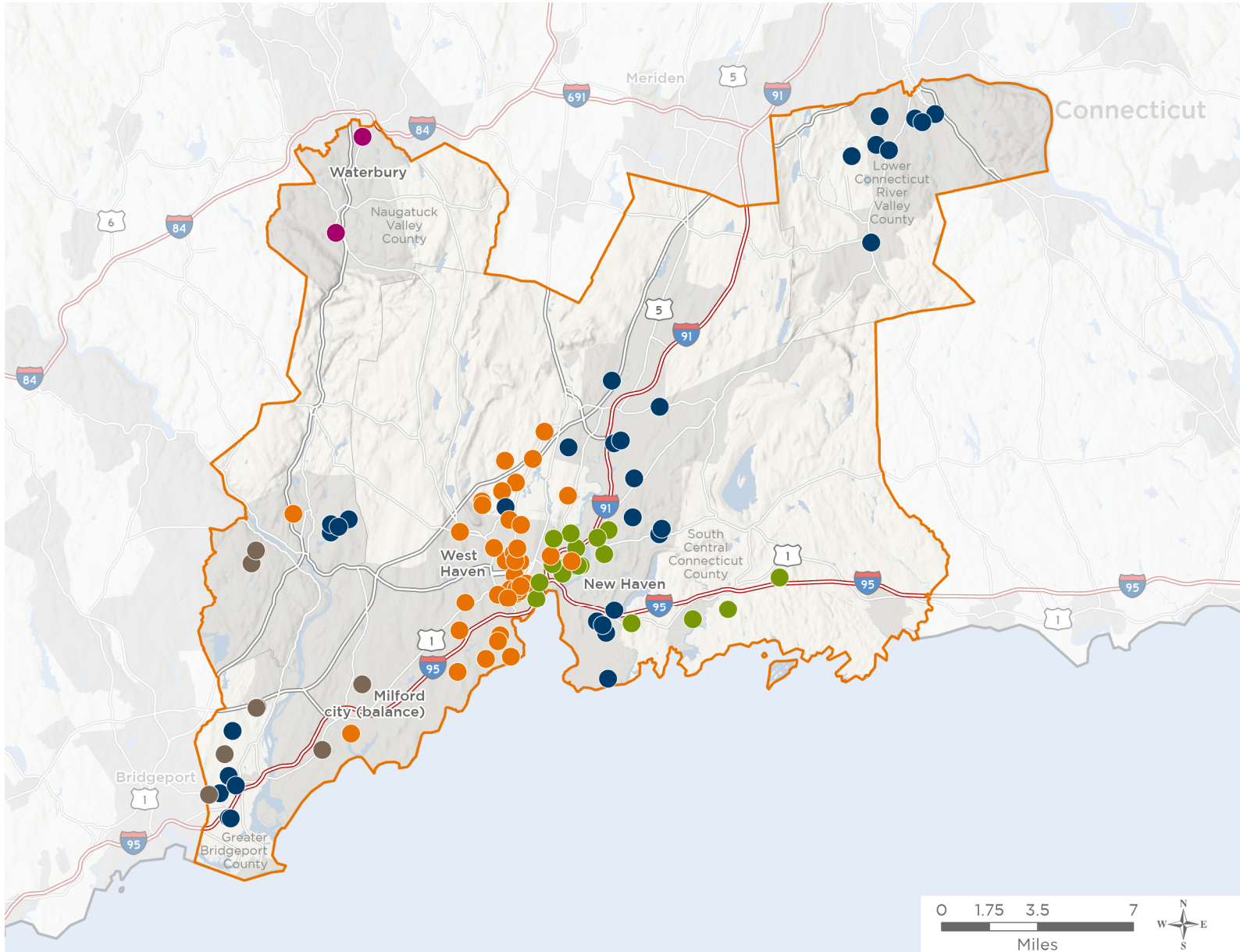




The 5 federally-funded health center organizations with a presence in Connecticut's 3rd Congressional District leverage **\$26,922,925** in federal investments to serve **262,212** patients.



111

**NUMBER OF DELIVERY SITES
IN CONGRESSIONAL DISTRICT**

- Federally-funded Delivery Site (each color represents one organization)
- Health Center Program Look-Alikes
- 119th Congressional District Boundaries
- County Boundaries
- Interstates
- Highways
- Populated Places
- Major Roads

Notes | Delivery sites represent locations of organizations funded by the federal Health Center Program. Health Center Program Look-Alikes are community-based health care providers that meet the requirements of the HRSA Health Center Program, but do not receive Health Center Program funding. Some locations may overlap due to scale or may otherwise not be visible when mapped. Federal investments represent the total funding from the federal Health Center Program to grantees with a presence in the state in 2023.

Sources | Federally-Funded Delivery Site Locations and Health Center Program Look-Alikes: data.HRSA.gov, November 2024. Health Center Patients and Federal Funding | 2024 Uniform Data System, Bureau of Primary Health Care, HRSA.



111

NUMBER OF DELIVERY SITES IN CONGRESSIONAL DISTRICT

(main organization in bold)

● **COMMUNITY HEALTH CENTER, INCORPORATED**

Ansonia High School SBHC | 20 Pulaski Hwy Ansonia, CT 06401-2844
Beman Middle School SBHC | 370 Hunting Hill Ave Middletown, CT 06457-4334
Bielefield Elementary School SBHC | 70 Maynard St Middletown, CT 06457-4519
Clintonville Elementary School SBHC | 456 Clintonville Rd North Haven, CT 06473-2815
Deer Run School SBHC | 311 Foxon Rd East Haven, CT 06513-2017
Dominick Ferrara Elementary School SBHC | 22 Maynard Rd East Haven, CT 06513-1250
East Haven High School SBHC | 35 Wheelbarrow Ln East Haven, CT 06513-2003
Eli Whitney Technical High School SBHC | 100 Fairview Ave Hamden, CT 06514-4822
Emmett O'Brien Technical High School SBHC | 141 Prindle Ave Ansonia, CT 06401-2561
Farm Hill Elementary SBHC | 398 Ridge Rd Middletown, CT 06457-4437
Frank Scott Bunnell High School SBHC | 1 Bulldog Blvd Stratford, CT 06614-2333
Frank Ward Strong SBHC | 191 Main St Durham, CT 06422-2108
Franklin Elementary School SBHC | 1895 Barnum Ave Stratford, CT 06614
Green Acres Elementary School SBHC | 146 Upper State St North Haven, CT 06473-1280
Grove J. Tuttle Elementary School SBHC | 108 Prospect Rd East Haven, CT 06512-3307
John C. Mead School SBHC | 75 Ford St Ansonia, CT 06401-2612
John G. Prendergast School SBHC | 59 Finney St RM 1253 Ansonia, CT 06401-2738
Joseph Melillo Middle School SBHC | 67 Hudson St East Haven, CT 06512-1524
Middlefield Memorial School SBHC | 124 Hubbard St Middlefield, CT 06455-1218
Momauguin Elementary School | 99 Cosey Beach Rd East Haven, CT 06512-4621
Montowese Elementary School SBHC | 145 Fitch St North Haven, CT 06473-3706
Nichols Elementary School SBHC | 396 Nichols Ave Stratford, CT 06614-3906
North Haven High School SBHC | 221 Elm St North Haven, CT 06473-3251
North Haven Middle School SBHC | 55 Bailey Rd North Haven, CT 06473-2652
Overbrook Early Learning Center SBHC | 54 Gerrish Ave East Haven, CT 06512-2725
Pathways Academy SBHC | 35 Bishop St East Haven, CT 06512-2939
Ridge Hill Elementary School SBHC | 1341 Ridge Rd North Haven, CT 06473-3005
Stratford Academy Johnson House SBHC | 719 Birdseye St Stratford, CT 06615-6827
Stratford Academy Victoria Soto School | 699 Birdseye St Stratford, CT 06615-6862
Stratford High School SBHC | 245 King St Stratford, CT 06615-5832
Vinal Technical High School SBHC | 60 Daniels St Middletown, CT 06457-4941
Wesley Elementary School SBHC | 10 Wesleyan Hills Rd Middletown, CT 06457
Wilbert Snow Elementary School SBHC | 299 Wadsworth St Middletown, CT 06457-4019

● **CORNELL SCOTT HILL HEALTH CORPORATION**

Brennan-Rogers Magnet School | 199 Wilmot Rd New Haven, CT 06515-1006
Church Street School SBHC | 95 Church St Hamden, CT 06514-3436



111

NUMBER OF DELIVERY SITES IN CONGRESSIONAL DISTRICT

(main organization in bold)

Columbus House Shelter Clinic | 586 Ella T Grasso Blvd New Haven, CT 06519-1806
Community Soup Kitchen-Broadway | 84 Broadway New Haven, CT 06511-3412
Cornell Scott-Hill Health Center at " Q " House 1st Floor | 197 Dixwell Ave New Haven, CT 06511-3415
Cornell Scott-Hill Health Center at " Q " House 2nd Floor | 197 Dixwell Ave New Haven, CT 06511-3415
Cornell Scott-Hill Health Corporation | 400 Columbus Ave New Haven, CT 06519-1233
CS-HHC Ansonia | 121 Wakelee Ave Ansonia, CT 06401-1198
CS-HHC at Augusta Lewis Troup School | 259 Edgewood Ave New Haven, CT 06511-4106
CS-HHC at Beth-El Center Homeless Clinic | 90 New Haven Ave Milford, CT 06460-4827
CS-HHC at Boys and Girls Club of New Haven | 253 Columbus Ave New Haven, CT 06519-2230
CS-HHC at CMHC | 34 Park St New Haven, CT 06519-1109
CS-HHC at Dr. Reginald Mayo Early Learning Center | 185 Goffe St New Haven, CT 06511-3307
CS-HHC at Dunbar Hill Elementary School | 315 Lane St Hamden, CT 06514-2718
CS-HHC at Helen Street Elementary School | 285 Helen St Hamden, CT 06514-4326
CS-HHC at Sargent Drive | 150 Sargent Dr STE 1-200 New Haven, CT 06511-6100
CS-HHC at Sargent Drive | 150 Sargent Dr STE 2-200 New Haven, CT 06511-6100
CS-HHC at the Ridge Hill Elementary School | 120 Carew Rd Hamden, CT 06517-2906
CS-HHC at the Savin Rock Community School | 50 Park St West Haven, CT 06516-6052
CS-HHC at The Towers | 18 Tower Ln New Haven, CT 06519-1764
CS-HHC at Washington Elementary School at the Anna V. Malloy School | 225 Meloy Rd West Haven, CT 06516-3035
CS-HHC at West Haven High School | 1 Mcdonough Plz RM SbhC West Haven, CT 06516-5257
CS-HHC Mobile Van | 400 Columbus Ave New Haven, CT 06519-1233
CS-HHC SBHC at Bailey Middle School | 106 Morgan Ln West Haven, CT 06516-6217
CS-HHC SBHC at Carrigan Intermediate School | 2 Tetlow St West Haven, CT 06516-1819
CS-HHC West Haven SBHC Van | 428 Columbus Ave New Haven, CT 06519-1233
Davis Street School Clinic | 35 Davis St New Haven, CT 06515-1601
Dixwell Child & Family Guidance | 226 Dixwell Ave STE ESP New Haven, CT 06511-3456
Fellowship Place Homeless Outrea | 441 Elm St New Haven, CT 06511-4523
Grant Street Partnership Program at West Haven | 285 Main St West Haven, CT 06516-7307
Hamden High School | 2040 Dixwell Ave Hamden, CT 06514-2415
Hamden Middle School | 2623 Dixwell Ave Hamden, CT 06518-3304
Health Care for the Homeless Team | 226 Dixwell Ave New Haven, CT 06511-3456
Hill Central School Clinic | 140 Dewitt St New Haven, CT 06519-2133
King Robinson SBHC | 150 Fournier St New Haven, CT 06511-1763
Life Haven Shelter Homless Out | 447 Ferry St New Haven, CT 06513-3617
Lincoln-Bassett Community School SBHC | 130 Bassett St New Haven, CT 06511-1879
Martha's Place | 559 Howard Ave New Haven, CT 06519-2139
Men's Seasonal Overflow Shelter Clinic | 209R Terminal Ln New Haven, CT 06519-1800
Roberto Clemente School Clinic | 360 Columbus Ave New Haven, CT 06519-1516



111

NUMBER OF DELIVERY SITES IN CONGRESSIONAL DISTRICT

(main organization in bold)

South Central Rehab Center | 232 Cedar St New Haven, CT 06519-1610

State Street Health & Counseling Services | 911 State St New Haven, CT 06511-3926

Taking Initiative Center/Marrakech | 514 Whalley Ave New Haven, CT 06511-2907

Truman School Based Health Ctr | 114 Truman St New Haven, CT 06519-2022

West Haven Health Center | 410 Campbell Ave West Haven, CT 06516-5014

Wilmont Crossing Health Center | 122 Wilmot Rd New Haven, CT 06515-1007

FAIR HAVEN COMMUNITY HEALTH CLINIC, INC.

BHcare | 14 Sycamore Way Branford, CT 06405-6551

Clinton Avenue School Based Health Center | 293 Clinton Ave New Haven, CT 06513-2814

East Haven High School | 35 Wheelbarrow Ln East Haven, CT 06513-2003

Fair Haven Community Health Care at 150 Sargent Drive | 150 Sargent Dr STE 1-300 New Haven, CT 06511-6100

Fair Haven Community Health Care at Bishop Woods School | 1481 Quinnipiac Ave New Haven, CT 06513-1520

Fair Haven Community Health Center @ 50 Grand | 50 Grand Ave New Haven, CT 06513-3949

Fair Haven Community Health Center | 374 Grand Ave New Haven, CT 06513-3733

Fair Haven K-8 School Based Health Center | 164 Grand Ave New Haven, CT 06513-3938

Fair Haven Medical Group at Bella Vista | 339 Eastern St New Haven, CT 06513-2463

Family Academy of Multi-Lingual Exploration (FAME) | 255 Blatchley Ave New Haven, CT 06513-3509

Grand Pharmacy at 111 Grand Avenue | 111 Grand Ave New Haven, CT 06513-3907

John B. Sliney Elementary School | 23 Eades St Branford, CT 06405-3628

John Martinez K-8 School Based Health Center | 100 James St New Haven, CT 06513-4222

Joseph Melillo Middle School | 67 Hudson St East Haven, CT 06512-1524

Leeway House | 40 Albert St New Haven, CT 06511-1542

Mary R. Tisko Elementary School | 118 Damascus Rd Branford, CT 06405-3979

Metropolitan Business Academy | 115 Water St New Haven, CT 06511-5758

Multicultural Ambulatory Addictions Services | 426 East St New Haven, CT 06511-5018

Ross Woodward School Based Health Center | 185 Barnes Ave New Haven, CT 06513-1707

Shoreline Family Health Care | 221 W Main St Branford, CT 06405-4022

Wilbur Cross High School Body Shop | 181 Mitchell Dr New Haven, CT 06511-2515

OPTIMUS HEALTH CARE

Chapel Street Elementary School - SBHC | 380 Chapel St Stratford, CT 06614-1690

David Wooster Middle School - SBHC | 150 Lincoln St Stratford, CT 06614-4000

Harry B. Flood Middle School - SBHC | 490 Chapel St Stratford, CT 06614-1690

Optimus at Shelton Intermediate School | 675 Constitution Blvd N RM 250 Shelton, CT 06484-6304

OPTIMUS Milford Community Health Center at Bridges | 949 Bridgeport Ave Milford, CT 06460-3142

OPTIMUS on Boston Avenue | 305 Boston Ave Stratford, CT 06614-5256

Platt Technical High School - SBHC | 600 Orange Ave Milford, CT 06461-2157

Shelton High School - SBHC | 120 Meadow St RM 407A Shelton, CT 06484-2276



NATIONAL ASSOCIATION OF
Community Health Centers®

Representative Rosa DeLauro
119th United States Congress

Connecticut's **3RD** Congressional District

111

**NUMBER OF DELIVERY SITES IN
CONGRESSIONAL DISTRICT**

(main organization in bold)

● **STAYWELL HEALTH CARE, INC.**

StayWell Naugatuck Health Center | 30 Church St Naugatuck, CT 06770-4112

StayWell South End Health Center | 1302 S Main St Waterbury, CT 06706-1748

StayWell South End Health Center II | 1309 S Main St Waterbury, CT 06706-1758