



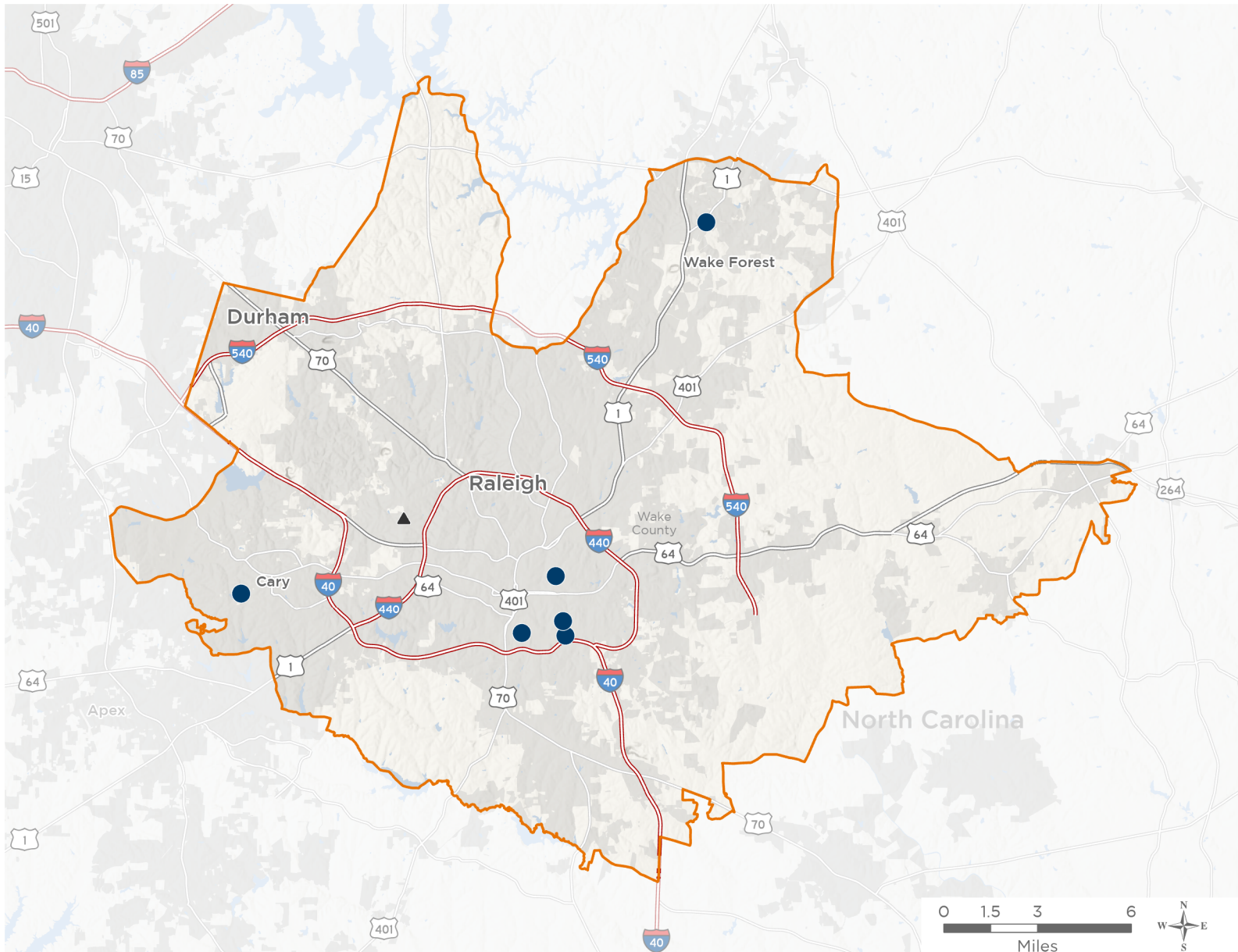
NATIONAL ASSOCIATION OF  
Community Health Centers®

# Representative Deborah Ross

## 119th United States Congress

North Carolina's **2<sup>ND</sup>** Congressional District

The 1 federally-funded health center organization with a presence in North Carolina's 2nd Congressional District leverages **\$3,819,347** in federal investments to serve **19,725** patients.



**7**

### NUMBER OF DELIVERY SITES IN CONGRESSIONAL DISTRICT

- Federally-funded Delivery Site (each color represents one organization)
- Health Center Program Look-Alikes
- 119th Congressional District Boundaries
- County Boundaries
- Populated Places
- Interstates
- Highways
- Major Roads

Notes | Delivery sites represent locations of organizations funded by the federal Health Center Program. Health Center Program Look-Alikes are community-based health care providers that meet the requirements of the HRSA Health Center Program, but do not receive Health Center Program funding. Some locations may overlap due to scale or may otherwise not be visible when mapped. Federal investments represent the total funding from the federal Health Center Program to grantees with a presence in the state in 2023.

Sources | Federally-Funded Delivery Site Locations and Health Center Program Look-Alikes: data.HRSA.gov, November 2024. Health Center Patients and Federal Funding | 2024 Uniform Data System, Bureau of Primary Health Care, HRSA.



NATIONAL ASSOCIATION OF  
Community Health Centers®

**Representative Deborah Ross**  
119th United States Congress

North Carolina's **2<sup>ND</sup>** Congressional District

**7**

## **NUMBER OF DELIVERY SITES IN CONGRESSIONAL DISTRICT**

(main organization in bold)

### ● **ADVANCE COMMUNITY HEALTH INC**

Advance CarePlex - Wake Forest | 110 Capcom Avenue Wake Forest, NC 27587-6531

Advance Community Health - Mobile Services | 187 High House Rd Cary, NC 27511-6715

CarePlex at Beacon Point | 1425 Promise Beacon Circle Raleigh, NC 27610

CARY at DORCAS PLAZA | 173 High House Rd Cary, NC 27511-6715

Horizon at Oak City Cares | 1430 S Wilmington St Raleigh, NC 27603-2526

Southeast Raleigh - South | 1011 Rock Quarry Rd Raleigh, NC 27610-3825

St. Augustine University CarePlex | 1315 Oakwood Ave Raleigh, NC 27610-2247

### ▲ **HEALTH CENTER PROGRAM LOOK-ALIKES**

Health Center Program Look-Alikes are community-based health care providers that meet the requirements of the HRSA Health Center Program, but do not receive Health Center Program funding.

#### **NEIGHBORHEALTH CENTER INC**

NeighborHealth Center Susanne Berger Clinic | 2605 Blue Ridge Rd STE 225 Raleigh, NC 27607-6459